

TACAN RWY 21R

YUMA MCAS/YUMA INTL (KNYL)

TACAN NYL Chan 84	APCH CRS 208°	Rwy Idg 13,300 TDZE 193 Arprt Elev 213
-----------------------------	-------------------------	---

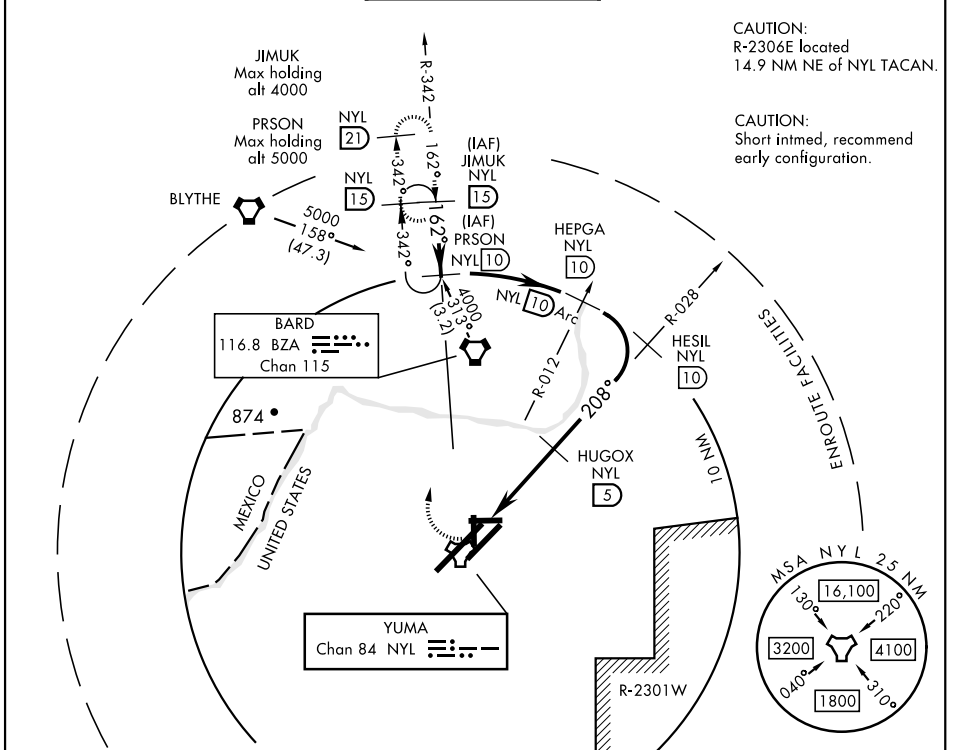
AL-511 [USN]

▼ * When ALS inop, increase CAT AB vis to 1 mile, CAT CD vis to 1 1/8 miles.



MISSED APPROACH: Climbing right turn to 4000 intercept NYL TACAN R-342 to JIMUK and hold, continue climb-in-hold to 4000.

ATIS★ 118.8 273.5	ASOS 256.4	YUMA APP CON 124.7 371.975	YUMA TOWER★ 119.3 (CTAF) 0 377.075	GND CON 121.9 314.0	CLNC DEL 118.0 336.4	ASR/PAR
-----------------------------	----------------------	--------------------------------------	--	-------------------------------	--------------------------------	---------



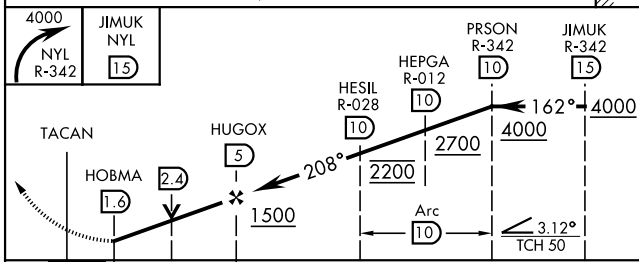
CAUTION:
R-2306E located
14.9 NM NE of NYL TACAN.

CAUTION:
Short intmed, recommend
early configuration.

SW-4, 25 FEB 2021 to 25 MAR 2021

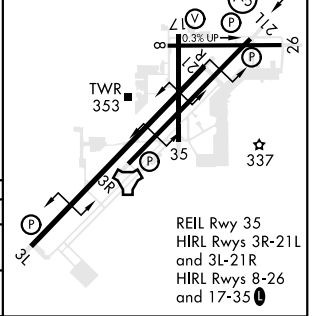
SW-4, 25 FEB 2021 to 25 MAR 2021

EMERG SAFE ALT 100 NM 17,100



ELEV 213	TDZE 193
----------	----------

3L-21R 13,300 x 200	208° to TACAN
3R-21L 9239 x 150	
8-26 6146 x 150	
17-35 5710 x 150	



REIL Rwy 35
HIRL Rwys 3R-21L
and 3L-21R
HIRL Rwys 8-26
and 17-35

TACAN RWY 21R