

YUMA, ARIZONA

# VOR RWY 17

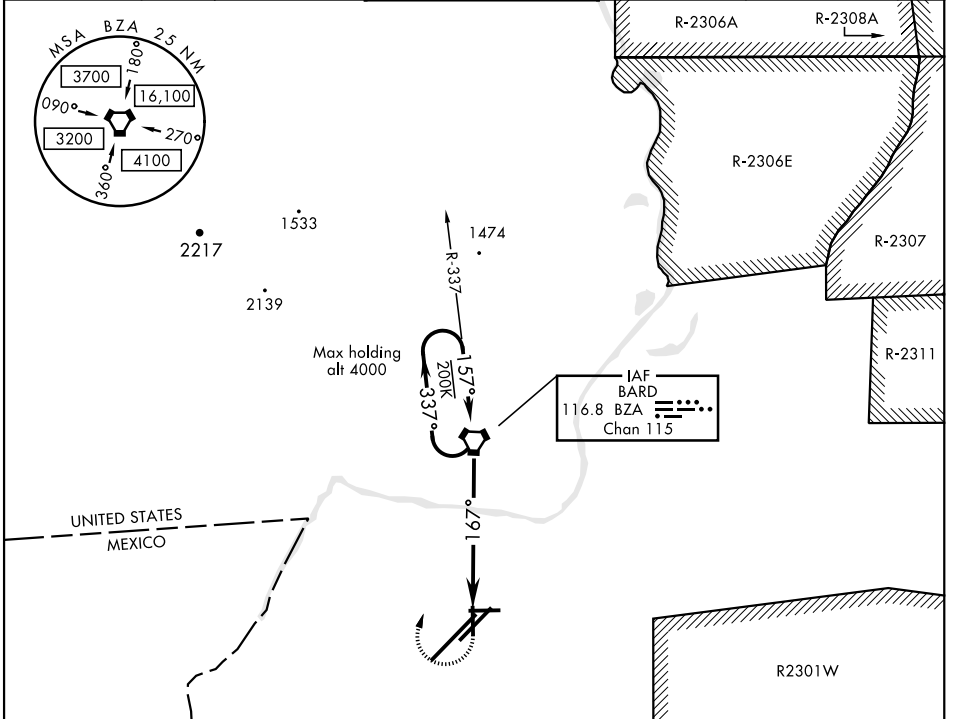
VORTAC BZA <b>116.8</b> Chan <b>115</b>	APCH CRS <b>167°</b>	Rwy ldg TDZE Arpt Elev <b>5710</b> <b>197</b> <b>213</b>
---	-------------------------	---

AL-511 [USN]

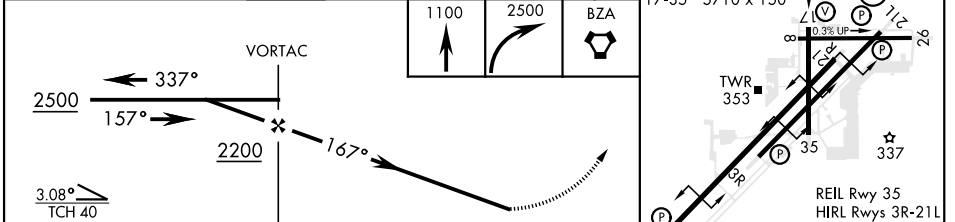
YUMA MCAS/YUMA INTL (KNYL)

**▼** MISSED APPROACH: Climb to 1100, then climbing right turn to 2500 direct BZA VORTAC and hold.

ATIS★ <b>118.8 273.5</b>	ASOS <b>256.4</b>	YUMA APP CON <b>124.7 371.975</b>	YUMA TOWER★ <b>119.3</b> (CTAF) <b>0 377.075</b>	GND CON <b>121.9 314.0</b>	CLNC DEL <b>118.0 336.4</b>	ASR/ PAR
-----------------------------	----------------------	--------------------------------------	---	-------------------------------	--------------------------------	-------------



ELEV 213	TDZE 197
3L-21R 13,300 x 200	167° 6.0 NM from VORTAC
3R-21L 9239 x 150	
8-26 6146 x 150	
17-35 5710 x 150	



CATEGORY	A	B	C	D
S-17	660-1	463 (500-1)	NA	
CIRCLING	680-1 467 (500-1)	700-1 487 (500-1)	NA	

FAF to MAP 6.0 NM					
Knots	60	90	120	150	180
Min:Sec	6:00	4:00	3:00	2:24	2:00

YUMA, ARIZONA 32°39'N-114°36'W YUMA MCAS/YUMA INTL (KNYL)

Amdt 3 24MAY18

# VOR RWY 17

SW-4, 25 FEB 2021 to 25 MAR 2021

SW-4, 25 FEB 2021 to 25 MAR 2021