


LOC I-OCF 111.5	APP CRS 004°	Rwy Idg 6347
		TDZE 80
		Apt Elev 89

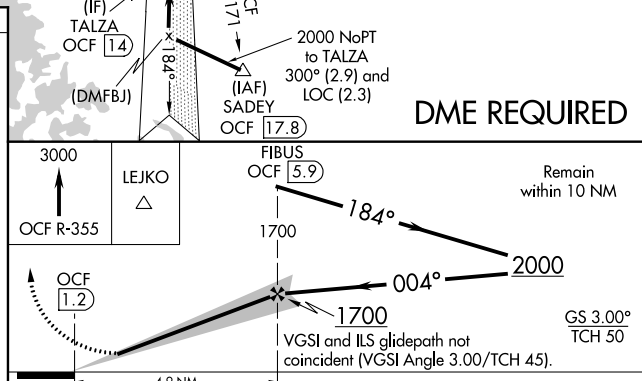
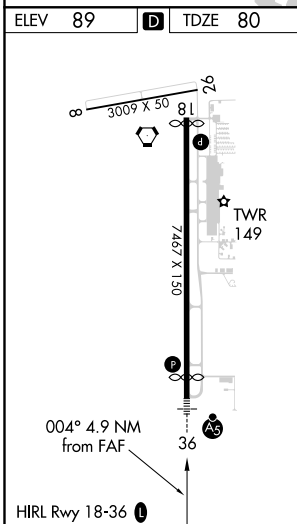
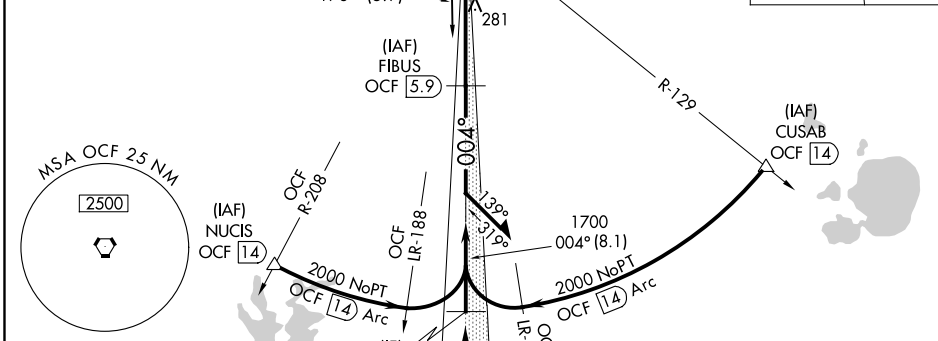
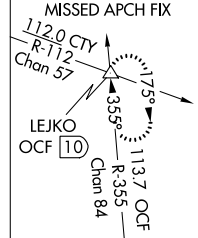
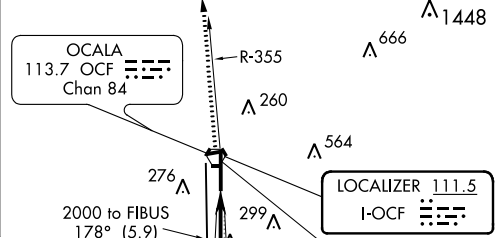
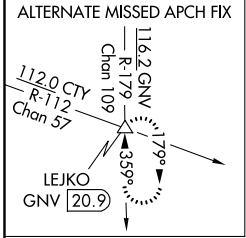
ILS or LOC/DME RWY 36

OCALA INTL-JIM TAYLOR FIELD (OCF)

⚠ DME from OCF VORTAC. Simultaneous reception of I-OCF and OCF DME required. When local altimeter setting not received, use Gainesville altimeter setting and increase S-ILS 36 DA to 361 and all MDA 100 feet; increase S-LOC 36 Cats C and D visibility ¼ mile. Inoperative table does not apply to S-ILS 36 all Cats when using local altimeter setting. For inoperative MALSRS, increase S-LOC 36 Cats A and B visibility to 1 mile. For inoperative MALSRS when using Gainesville altimeter setting, increase S-LOC 36 Cats A and B visibility to 1 mile.

MALSRS

MISSED APPROACH: Climb to 3000 via OCF VORTAC R-355 to LEJKO INT/OCF VORTAC 10 DME and hold continue climb-in-hold to 3000.

ATIS 128.125	JACKSONVILLE APP CON 118.6 251.15	OCALA TOWER ★ 119.25 (CTAF) 0	GND CON 121.4	UNICOM 123.0
------------------------	---	---	-------------------------	------------------------



CATEGORY	A	B	C	D
S-ILS 36		280-¾	200 (200-¾)	
S-LOC 36		540-¾	460 (500-¾)	540-1 460 (500-1)
CIRCLING	580-1	491 (500-1)	580-1½ 491 (500-1½)	640-2 551 (600-2)

SE-3, 25 FEB 2021 to 25 MAR 2021

SE-3, 25 FEB 2021 to 25 MAR 2021