

WAAS CH 58110 W36A	APP CRS 004°	Rwy Idg TDZE Apt Elev	6347 80 89
--	------------------------	-----------------------------	---------------------------------------

RNAV (GPS) RWY 36

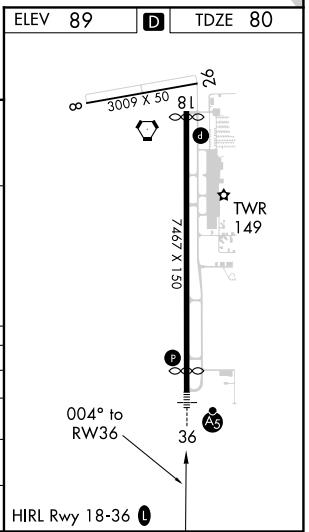
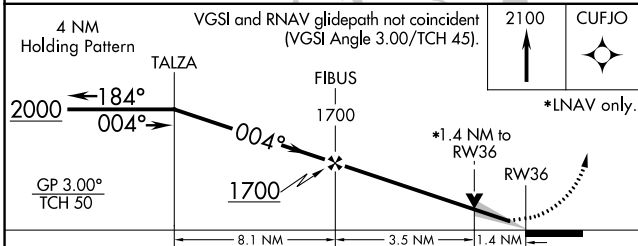
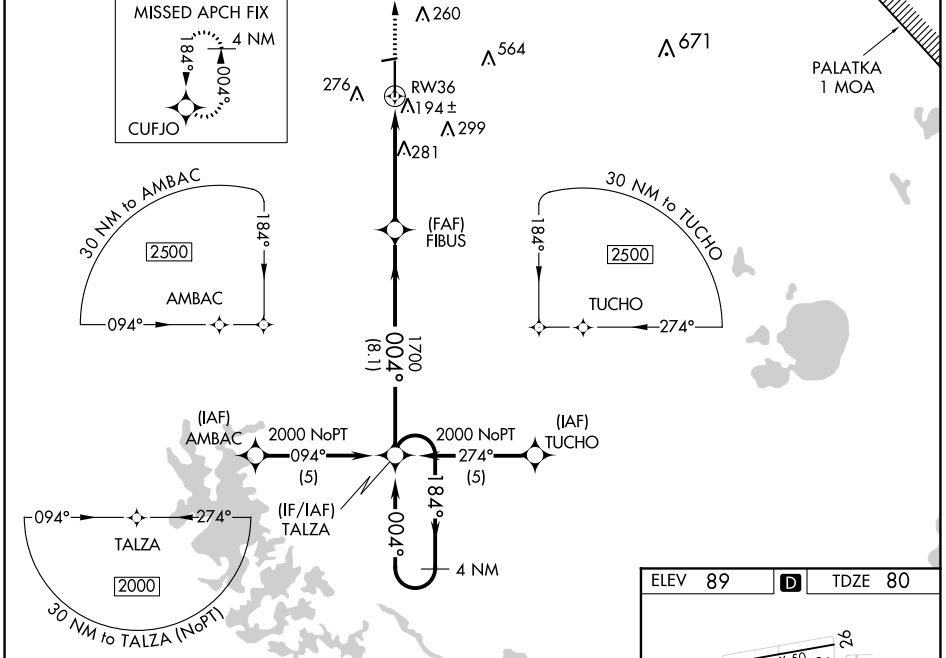
OCALA INTL-JIM TAYLOR FIELD (OCF)

▼ For uncompensated Baro-VNAV systems, LNAV/VNAV NA below -15°C (5°F) or above 48°C (118°F). DME/DME RNP-0.3 NA. When local altimeter setting not received, use Gainesville altimeter setting and increase LPV DA to 361, LNAV/VNAV DA to 644, and all MDA 100 feet; increase LNAV/VNAV all Cats, and LNAV Cats C and D visibility ¼ mile. VDP and Baro-VNAV NA when using Gainesville altimeter setting. Inoperative table does not apply to LPV when using local altimeter setting. For inoperative MALSR, increase LNAV Cats A and B visibility to 1 mile. For inoperative MALSR when using Gainesville altimeter setting, increase LNAV Cats A and B visibility to 1 mile.



MISSED APPROACH:
Climb to 2100 direct CUFJO and hold.

ATIS 128.125	JACKSONVILLE APP CON 118.6 251.15	OCALA TOWER ★ 119.25 (CTAF)	GND CON 121.4	UNICOM 123.0
------------------------	---	---------------------------------------	-------------------------	------------------------



CATEGORY	A	B	C	D
LPV DA	280-¾		200 (200-¾)	
LNAV/VNAV DA	563-1¼		483 (500-1¼)	
LNAV MDA	540-¾ 460 (500-¾)		540-1 460 (500-1)	
CIRCLING	580-1 491 (500-1)		580-1½ 491 (500-1½) 640-2 551 (600-2)	

SE-3, 25 FEB 2021 to 25 MAR 2021

SE-3, 25 FEB 2021 to 25 MAR 2021