

LOC/DME I-CH 111.5 Chan 52	APP CRS 359°	Rwy ldg 5000 TDZE 343 Apt Elev 355
--	------------------------	---

ILS or LOC RWY 36

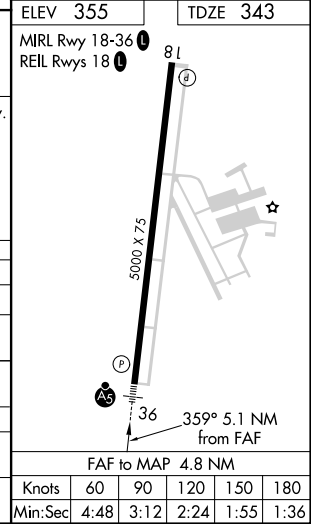
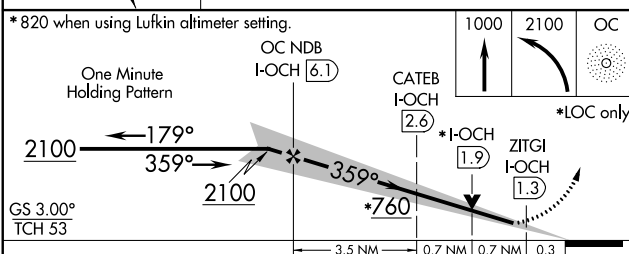
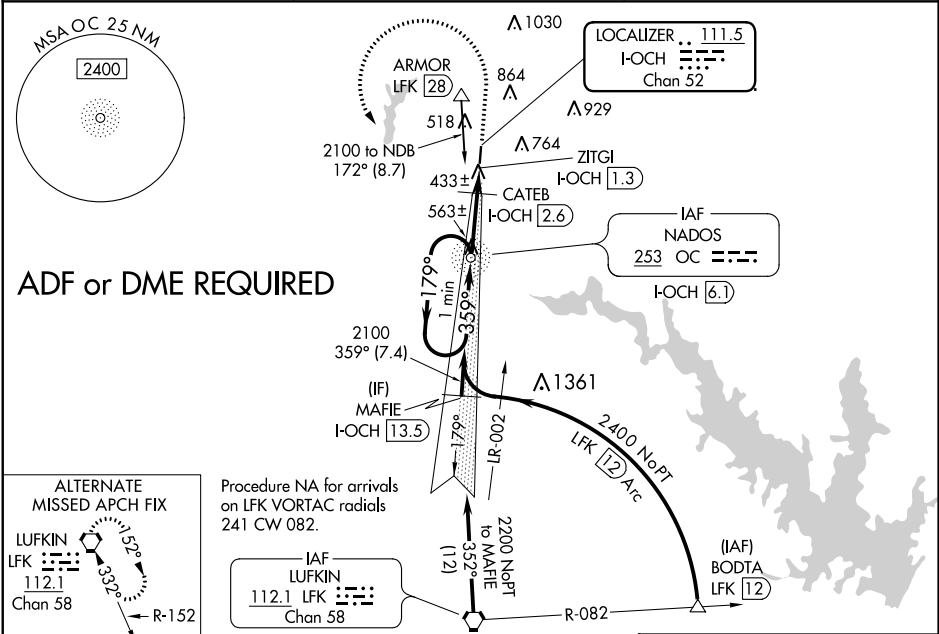
NACOGDOCHES A L MANGHAM JR RGNL (OCH)

NA ADF required. When local altimeter setting not received, use Lufkin altimeter setting and increase all DA 56 feet and all MDA 60 feet and increase all S-LOC 36 Cat C visibilities 1/4 SM. VDP NA when using Lufkin altimeter setting. Localizer unusable inside 0.3 NM from threshold. Autopilot coupled approach NA below 740.

MALSR
A5

MISSED APPROACH: Climb to 1000 then climbing left turn to 2100 direct NADOS/OC NDB and hold.

AWOS-3PT 135.625	HOUSTON CENTER 125.175 285.575	UNICOM 123.0 (CTAF)
----------------------------	--	-------------------------------



CATEGORY	A	B	C	D
S-ILS 36	543-1/2 200 (200-1/2)			NA
S-LOC 36	760-1/2	417 (500-1/2)	760-3/4 417 (500-3/4)	NA
CIRCLING	860-1	505 (600-1)	860-1 1/2 505 (600-1 1/2)	NA
CATEB FIX MINIMUMS (DME REQUIRED)				
S-LOC 36	700-1/2	357 (400-1/2)	700-3/8 357 (400-3/8)	NA
CIRCLING	860-1	505 (600-1)	860-1 1/2 505 (600-1 1/2)	NA

SC-5, 25 FEB 2021 to 25 MAR 2021

SC-5, 25 FEB 2021 to 25 MAR 2021