

# RNAV (GPS) RWY 18

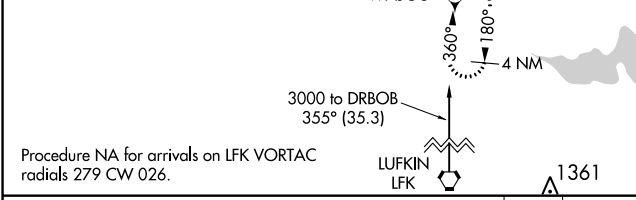
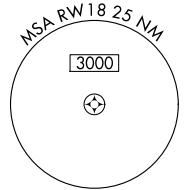
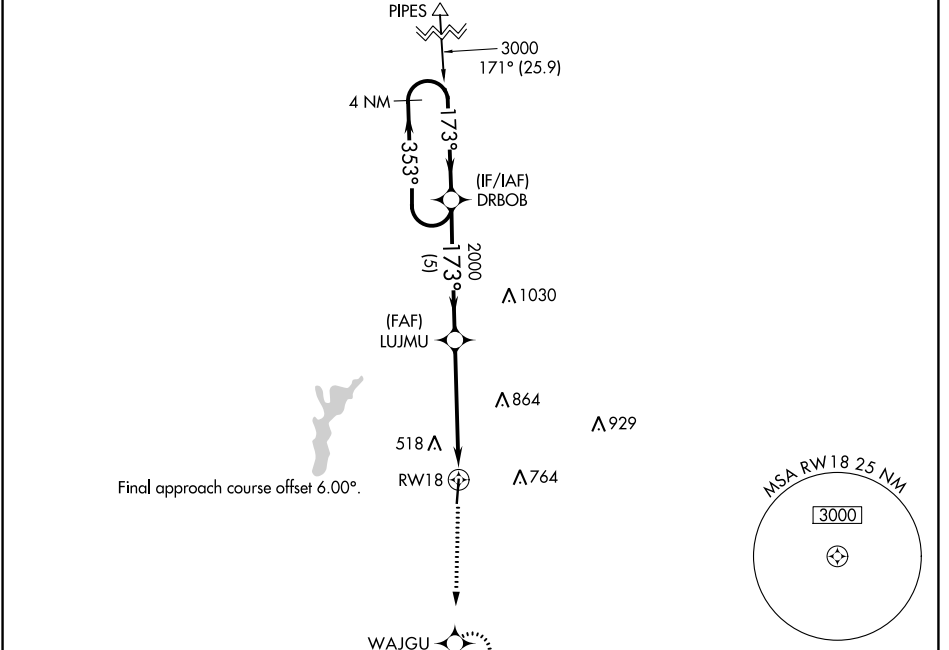
NACOGDOCHES A L MANGHAM JR RGNL (OCH)

APP CRS <b>173°</b>	Rwy Idg <b>5000</b>
	TDZE <b>343</b>
	Apt Elev <b>355</b>

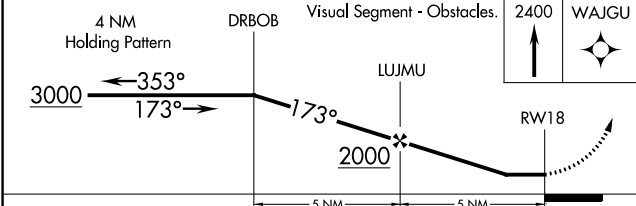
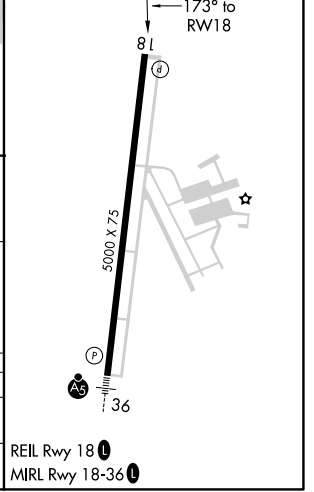
**⚠** DME/DME RNP-0.3 NA. Rwy 18 helicopter visibility reduction below 1 SM NA.  
**⚠** When local altimeter not received, use Lufkin altimeter setting and increase all MDA 60 feet and increase LNAV and Circling Cat C visibility to 2 SM.

**MISSED APPROACH:** Climb to 2400 direct WAJGU and hold.

AWOS-3PT <b>135.625</b>	HOUSTON CENTER <b>125.175 285.575</b>	UNICOM <b>123.0 (CTAF) 0</b>
----------------------------	--	---------------------------------



ELEV 355	TDZE 343
----------	----------



CATEGORY	A	B	C	D
LNAV MDA	980-1	637 (700-1)	980-1 <sup>3</sup> / <sub>4</sub> 637 (700-1 <sup>3</sup> / <sub>4</sub> )	NA
CIRCLING	980-1	625 (700-1)	980-1 <sup>3</sup> / <sub>4</sub> 625 (700-1 <sup>3</sup> / <sub>4</sub> )	NA

# RNAV (GPS) RWY 18

SC-5, 25 FEB 2021 to 25 MAR 2021

SC-5, 25 FEB 2021 to 25 MAR 2021