


WAAS CH 93528 W36A	APP CRS 359°	Rwy Idg TDZE Apt Elev	5000 343 355
--	------------------------	-----------------------------	---

RNAV (GPS) RWY 36

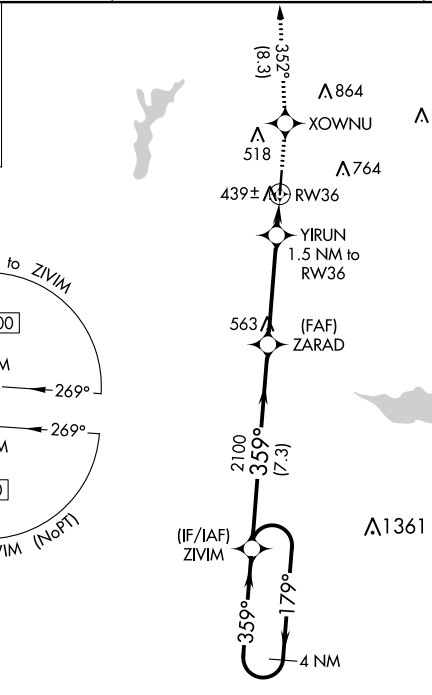
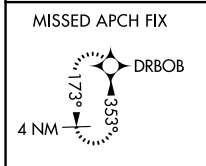
NACOGDOCHES A L MANGHAM JR RGNL (OCH)

⚠ Baro-VNAV NA when using Lufkin altimeter setting. For uncompensated Baro-VNAV systems, LNAV/VNAV NA below -1.5°C (5°F) or above 54°C (130°F). DME/DME RNP-0.3 NA. When local altimeter setting not received, use Lufkin altimeter setting and increase all DA 56 feet and all MDA 60 feet; increase LNAV/VNAV all Cats visibility 1/8 SM, increase LNAV Cat C visibility 1/8 SM.

MALSR


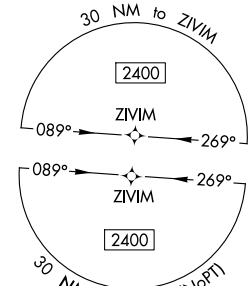
MISSED APPROACH: Climb to 2400 direct XOWNU and on track 352° to DRBOB and hold.

AWOS-3PT 135.625	HOUSTON CENTER 125.175 285.575	UNICOM 123.0 (CTAF)
----------------------------	--	-------------------------------

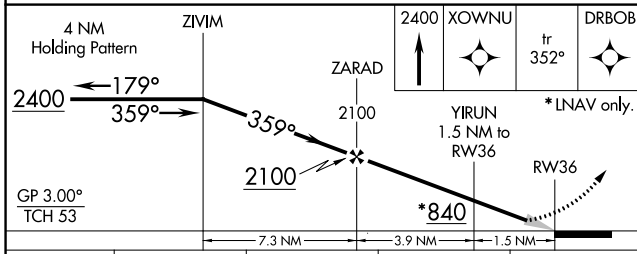


SC-5, 25 FEB 2021 to 25 MAR 2021

SC-5, 25 FEB 2021 to 25 MAR 2021



ELEV 355	TDZE 343
----------	----------



CATEGORY	A	B	C	D
LPV DA	543-1/2	200 (200-1/2)		NA
LNAV/VNAV DA	625-1/2	282 (300-1/2)		NA
LNAV MDA	700-1/2	357 (400-1/2)	700-5/8 357 (400-5/8)	NA
CIRCLING	860-1	505 (600-1)	860-1/2 505 (600-1/2)	NA

