

WAAS CH 99629 W11A	APP CRS 112°	Rwy Idg 3198 TDZE 604 Apt Elev 604
--	------------------------	---

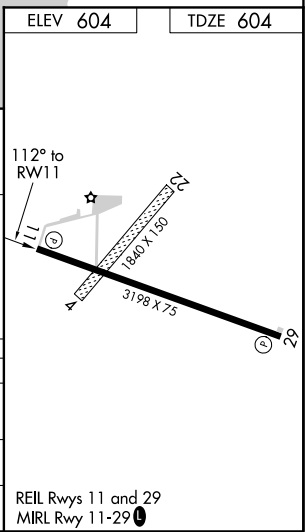
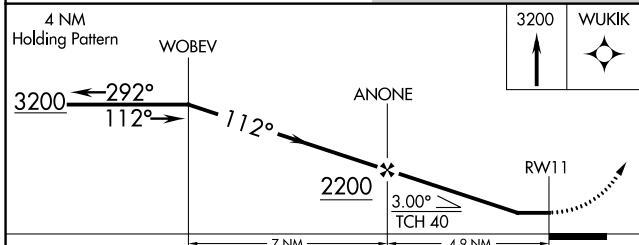
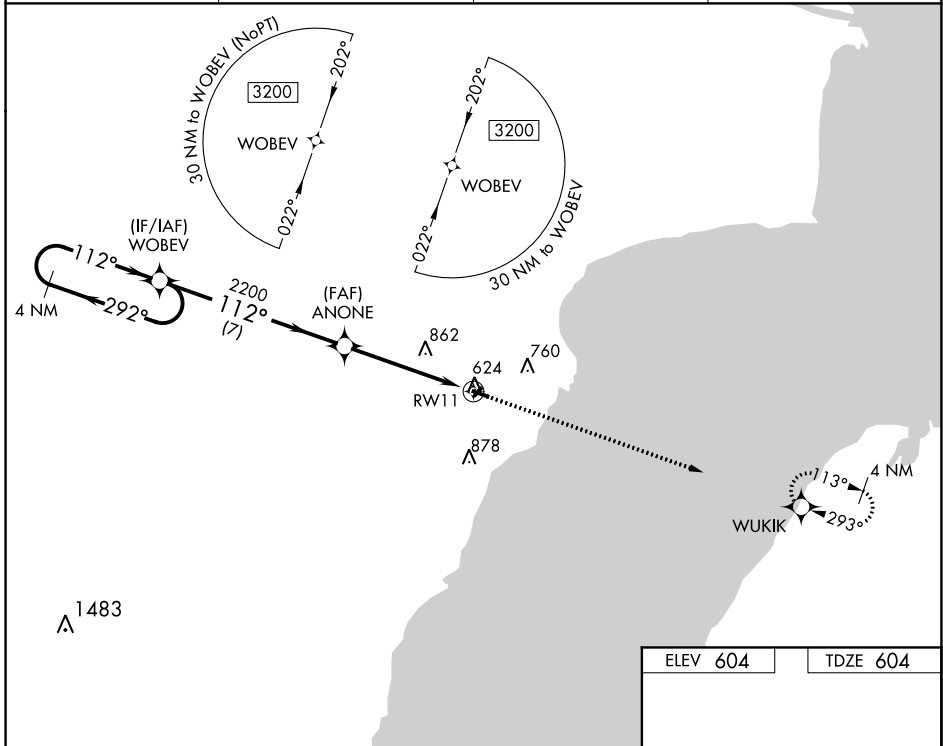
RNAV (GPS) RWY 11

OCONTO-J DOUGLAS BAKE MUNI (OCQ)

▼ Use Menominee, MI altimeter setting; when not received, use Green Bay altimeter setting and increase all DA/MDA 40 feet; increase Circling Cat C visibility 1/8 mile.
▲ NA Procedure NA at night. DME/DME RNP-0.3 NA. Visibility reduction by helicopters NA.

MISSED APPROACH:
Climb to 3200 direct WUKIK and hold.

AWOS-3 120.925	MNM AWOS-3PT 109.6	GREEN BAY APP CON ★ 120.3 338.2	UNICOM 122.8 (CTAF) 0
--------------------------	------------------------------	---	---------------------------------



CATEGORY	A	B	C	D
LP MDA	1200-1	596 (600-1)	1200-1¾ 596 (600-1¾)	NA
LNAV MDA	1220-1	616 (700-1)	1220-1¾ 616 (700-1¾)	NA
CIRCLING	1220-1	616 (700-1)	1240-1¾ 636 (700-1¾)	NA

REIL Rwy 11 and 29
MIRL Rwy 11-29 0

EC-3, 25 FEB 2021 to 25 MAR 2021

EC-3, 25 FEB 2021 to 25 MAR 2021