

WAAS CH 45618 W11A	APP CRS 113°	Rwy Idg 6200 TDZE 2976 Apt Elev 3004
--	------------------------	---

RNAV (GPS) RWY 11

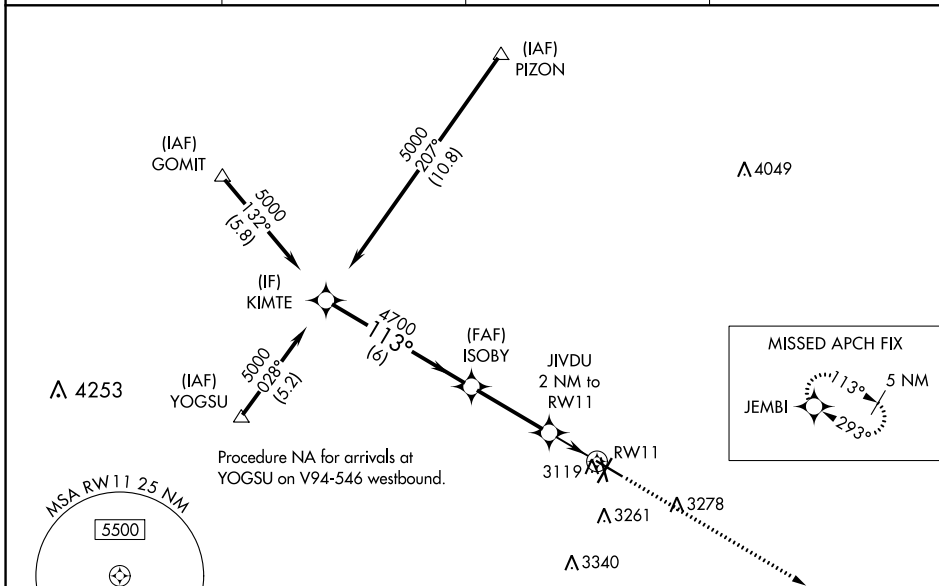
ODESSA-SCHLEMEYER FIELD (ODO)

▼ Circling to Rwy 16 and 20 NA at night. For uncompensated Baro-VNAV systems, LNAV/VNAV NA below -20°C (-4°F) or above 54°C (130°F). DME/DME RNP-0.3 NA. Circling NA S of Rws 2 and 34.

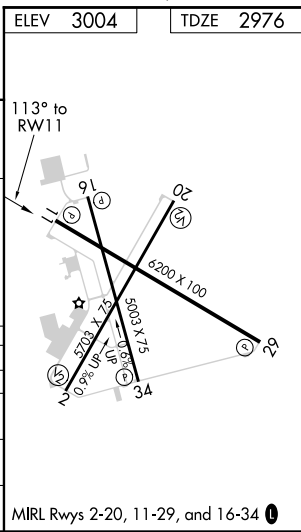
▲ When local altimeter setting not received use Midland Intl Air and Space Port altimeter setting and increase all DA 41 feet and all MDA 60 feet and increase LNAV/VNAV all Cats visibility 1/8 mile, LNAV Cat C and D and Circling Cat C visibility 1/4 mile. VDP NA with Midland Intl Air and Space Port altimeter setting. Baro-VNAV NA when using Midland Intl Air and Space Port altimeter setting.

MISSED APPROACH:
Climb to 5000 direct JEMBI and hold.

ASOS 119.275	MIDLAND APP CON * 124.6 256.875	CLNC DEL 121.7	UNICOM 123.0 (CTAF) 0
------------------------	---	--------------------------	---------------------------------



	ELEV 3004	TDZE 2976		
CATEGORY	A	B	C	D
LPV DA		3176-3/4	200 (200-3/4)	
LNAV/VNAV DA		3347-1 1/4	371 (400-1 1/4)	
LNAV MDA	3380-1	404 (400-1)	3380-1 1/8	404 (400-1 1/8)
CIRCLING	3460-1	456 (500-1)	3600-1 1/2 596 (600-1 1/2)	3600-2 596 (600-2)



SC-3, 25 FEB 2021 to 25 MAR 2021

SC-3, 25 FEB 2021 to 25 MAR 2021