

VORTAC MAF 114.8 Chan 95	APP CRS 231°	Rwy Idg TDZE Apt Elev	N/A N/A 3004
--	------------------------	-----------------------------	---

AL-5689 (FAA)

VOR-A

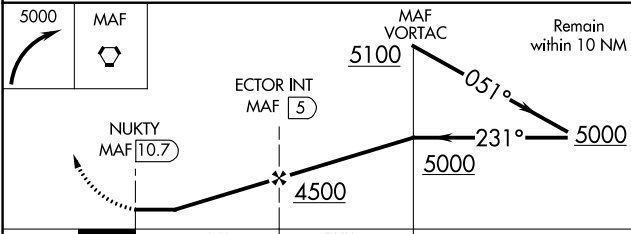
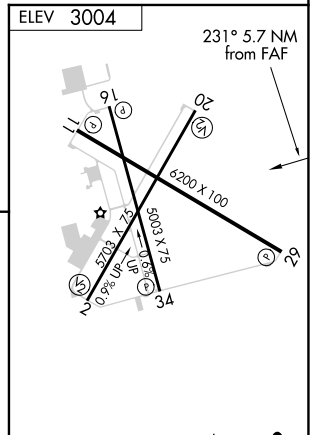
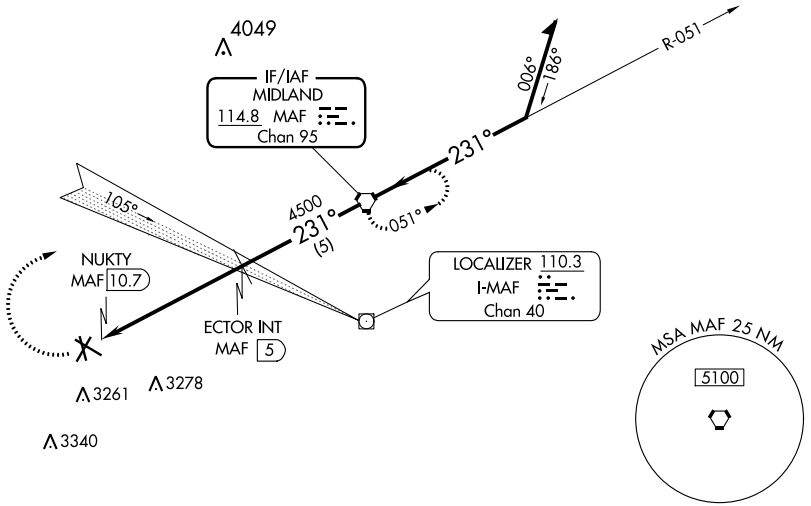
ODESSA-SCHLEMEYER FIELD (ODO)

⚠ Circling NA south of Rwy 2 and 34. When local altimeter setting not received use Midland Intl Air and Space Port altimeter setting and increase all MDA 60 feet.

⚠ MISSED APPROACH: Climbing right turn to 5000 direct MAF VORTAC and hold.

ASOS 119.275	MIDLAND APP CON★ 124.6 256.875	CLNC DEL 121.7	UNICOM 123.0 (CTAF) 📻
------------------------	--	--------------------------	--

NoPT for arrival on MAF VORTAC airway radials 357 CW 102.



CATEGORY	A		B		C		D		FAF to MAP 5.7 NM				
	3460-1	456 (500-1)	3460-1½	456 (500-1½)	3600-2	596 (600-2)	Knots	60	90	120	150	180	
CIRCLING	3460-1 456 (500-1)		3460-1½ 456 (500-1½)		3600-2 596 (600-2)		Min:Sec	5:42	3:48	2:51	2:17	1:54	

SC-3, 25 FEB 2021 to 25 MAR 2021

SC-3, 25 FEB 2021 to 25 MAR 2021