

WAAS CH <b>99606</b> <b>W25A</b>	APP CRS <b>249°</b>	Rwy Idg TDZE Apt Elev	<b>5350</b> <b>959</b> <b>959</b>
--	------------------------	-----------------------------	---

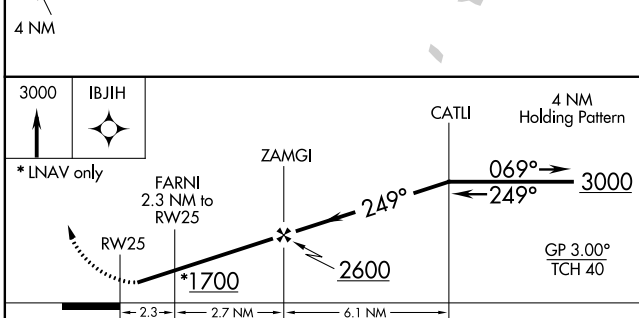
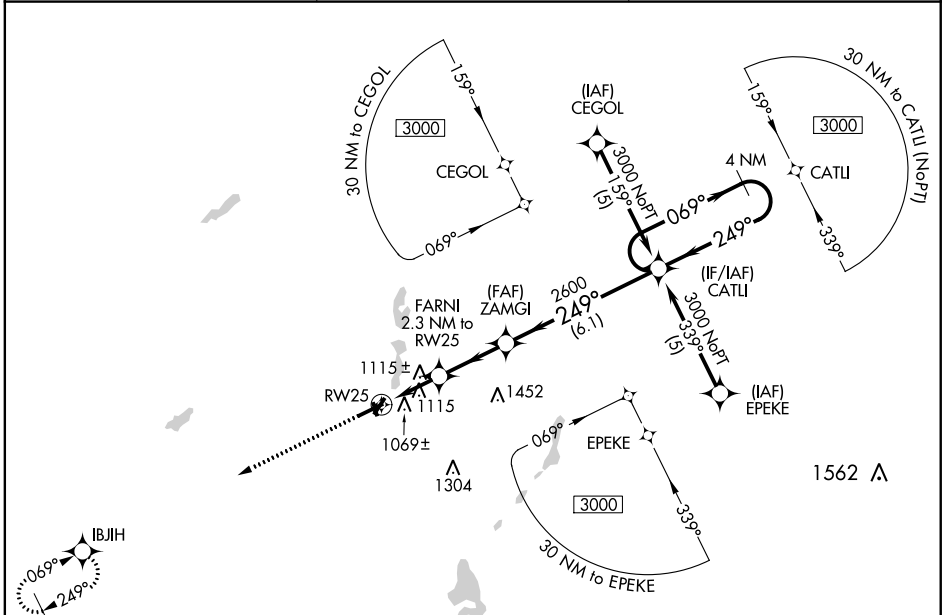
**RNAV (GPS) RWY 25**  
BRANCH COUNTY MEMORIAL (O/E/B)

RNP APCH

Rwy 25 helicopter visibility reduction below 1 SM NA. When local altimeter setting not received, use Sturgis altimeter setting and increase all DAs 48 feet and LPV visibility 1/4 mile all Cats and all MDAs 60 feet and LNAV Cat C visibility 1/4 mile. Baro-VNAV NA when using Sturgis altimeter setting. For uncompensated Baro-VNAV systems, LNAV/VNAV NA below -16°C or above 54°C. Circling NA to Rwys 16 and 34.

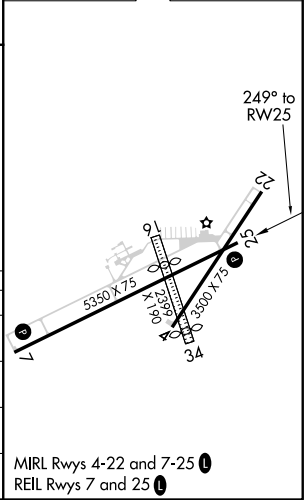
MISSED APPROACH:  
Climb to 3000 direct  
IBJIH and hold.

AWOS-3 <b>118.125</b>	GREAT LAKES APP CON * <b>121.2 239.25</b>	UNICOM <b>122.7 (CTAF) 0</b>
--------------------------	--	---------------------------------



ELEV 959	TDZE 959
----------	----------

CATEGORY	A	B	C	D
LPV DA	1306-1¼	347 (400-1¼)		NA
LNAV/VNAV DA	1424-1¾	465 (500-1¾)		NA
LNAV MDA	1420-1	461 (500-1)	1420-1¼ 461 (500-1¼)	NA
CIRCLING	1420-1 461 (500-1)	1440-1 481 (500-1)	1480-1½ 521 (600-1½)	NA



EC-1, 25 FEB 2021 to 25 MAR 2021

EC-1, 25 FEB 2021 to 25 MAR 2021