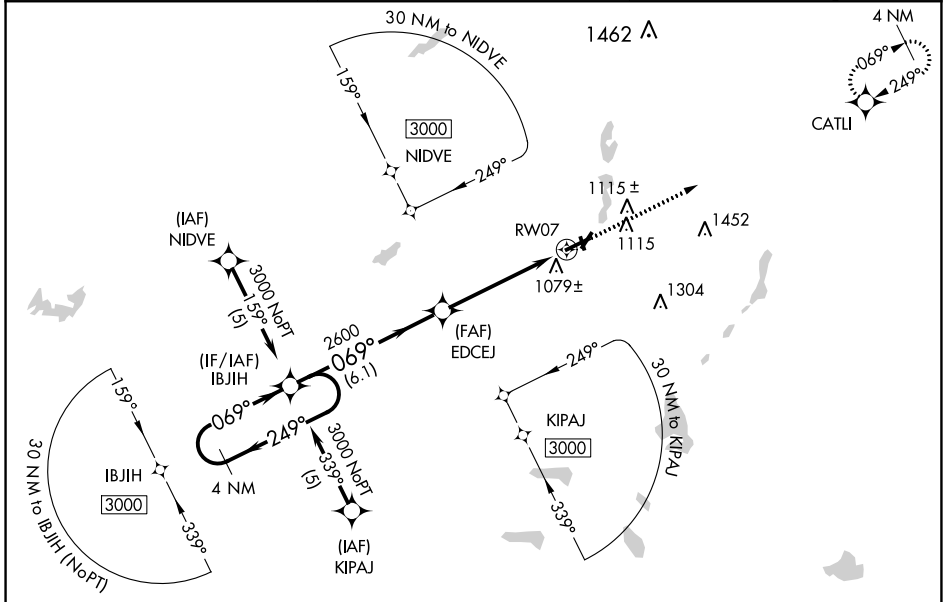


WAAS CH <b>56506</b> <b>W07A</b>	APP CRS <b>069°</b>	Rwy Idg TDZE Apt Elev	<b>5350</b> <b>959</b> <b>959</b>
--	------------------------	-----------------------------	---

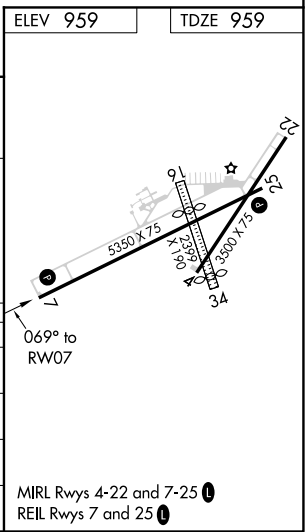
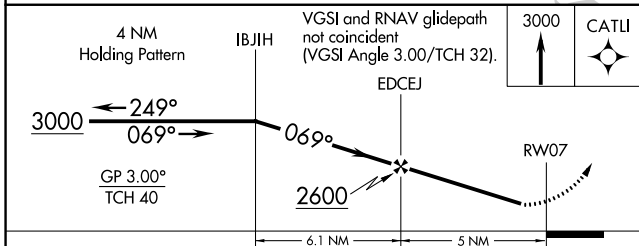
**RNAV (GPS) RWY 7**  
BRANCH COUNTY MEMORIAL (O/E/B)

RNP APCH.  
 ⚠ Rwy 7 helicopter visibility reduction below 3/4 SM NA. Baro-VNAV NA when using Sturgis altimeter setting. For uncompensated Baro-VNAV systems, LNAV/VNAV NA below -16°C or above 54°C. Circling NA to Rwy's 16 and 34. When local altimeter setting not received, use Sturgis altimeter setting and increase all DAs 48 feet and LPV visibility 1/4 mile all Cats and all MDAs 60 feet and LNAV Cat C visibility 1/4 mile.  
 MISSED APPROACH: Climb to 3000 direct CATLI and hold.

AWOS-3 <b>118.125</b>	GREAT LAKES APP CON * <b>121.2 239.25</b>	UNICOM <b>122.7 (CTAF)</b>
--------------------------	--	-------------------------------



ELEV 959	TDZE 959
----------	----------



CATEGORY	A	B	C	D
LPV DA	1307-1 1/4	348 (400-1 1/4)		NA
LNAV/VNAV DA	1418-1 3/4	459 (500-1 3/4)		NA
LNAV MDA	1420-1	461 (500-1)	1420-1 1/4 461 (500-1 1/4)	NA
CIRCLING	1420-1 461 (500-1)	1440-1 481 (500-1)	1480-1 1/2 521 (600-1 1/2)	NA

MIRL Rwy's 4-22 and 7-25  
REIL Rwy's 7 and 25

EC-1, 25 FEB 2021 to 25 MAR 2021

EC-1, 25 FEB 2021 to 25 MAR 2021