

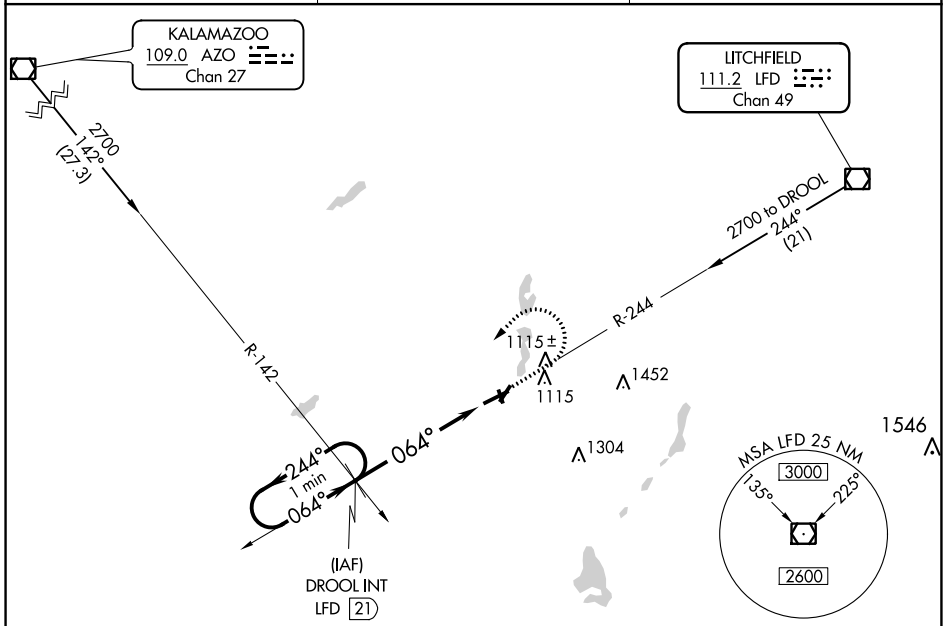
VOR/DME LFD 111.2 Chan 49	APP CRS 064°	Rwy ldg TDZE 959 Apt Elev 959
---	------------------------	---

VOR RWY 7
BRANCH COUNTY MEMORIAL (O/E/B)

- ▼ When local altimeter setting not received, use Sturgis altimeter setting and increase all MDAs 60 feet and S-7 Cat C visibility ¼ mile.
- ▲ Circling NA to Rwys 16 and 34. Rwy 7 helicopter visibility reduction below ¾ SM NA.

MISSED APPROACH: Climb to 2000 then climbing left turn to 2700 via heading 205° and LFD R-244 to DROOL INT/LFD 21 DME and hold.

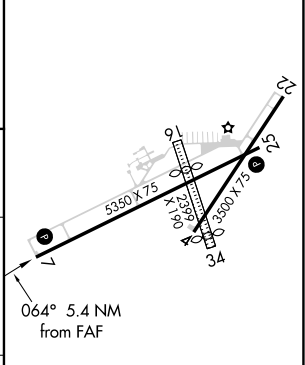
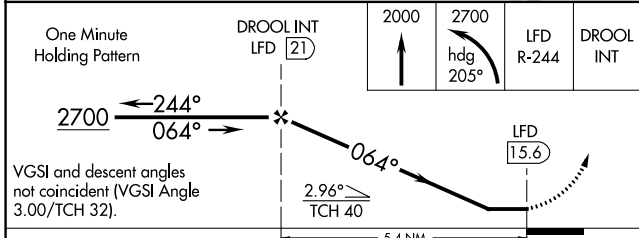
AWOS-3 118.125	GREAT LAKES APP CON ★ 121.2 239.25	UNICOM 122.7 (CTAF) 0
--------------------------	--	---------------------------------



EC-1, 25 FEB 2021 to 25 MAR 2021

EC-1, 25 FEB 2021 to 25 MAR 2021

ELEV 959	TDZE 959
----------	----------



CATEGORY	A	B	C	D
S-7	1440-1	481 (500-1)	1440-1¼ 481 (500-1¼)	NA
CIRCLING	1440-1	481 (500-1)	1480-1½ 521 (600-1½)	NA

MIRL Rwys 4-22 and 7-25 0					
REIL Rwys 7 and 25 0					
FAF to MAP 5.4 NM					
Knots	60	90	120	150	180
Min:Sec	5:24	3:36	2:42	2:10	1:48