

VOR/DME LFD <b>111.2</b> Chan <b>49</b>	APP CRS <b>244°</b>	Rwy ldg <b>5350</b> TDZE <b>959</b> Apt Elev <b>959</b>
---	------------------------	---

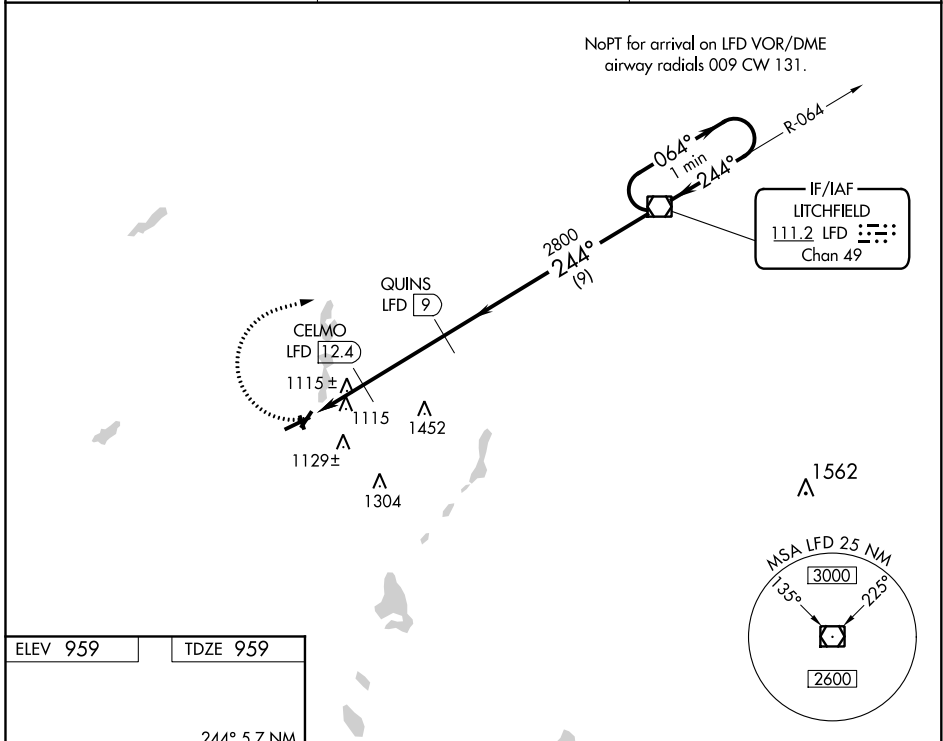
# VOR/DME RWY 25

BRANCH COUNTY MEMORIAL (O/E/B)

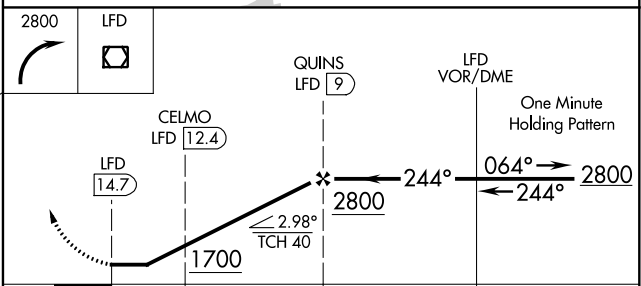
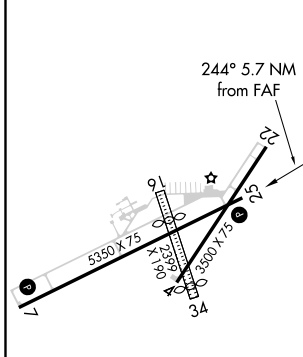
**⚠** When local altimeter setting not received, use Sturgis altimeter setting and increase all MDAs 60 feet and S-25 Cat C visibility ¼ mile. Rwy 25 helicopter visibility reduction below 1 SM NA. Circling NA to Rwy 16 and 34.

MISSED APPROACH: Climbing right turn to 2800 direct LFD VOR/DME and hold.

AWOS-3 <b>118,125</b>	GREAT LAKES APP CON * <b>121.2 239.25</b>	UNICOM <b>122.7 (CTAF) 0</b>
--------------------------	--	---------------------------------



ELEV 959	TDZE 959
----------	----------



CATEGORY	A	B	C	D
S-25	1420-1	461 (500-1)	1420-1¼ 461 (500-1¼)	NA
CIRCLING	1420-1 461 (500-1)	1440-1 481 (500-1)	1480-1½ 521 (600-1½)	NA

MIRL Rwy 4-22 and 7-25  
REIL Rwy 7 and 25

EC-1, 25 FEB 2021 to 25 MAR 2021

EC-1, 25 FEB 2021 to 25 MAR 2021