

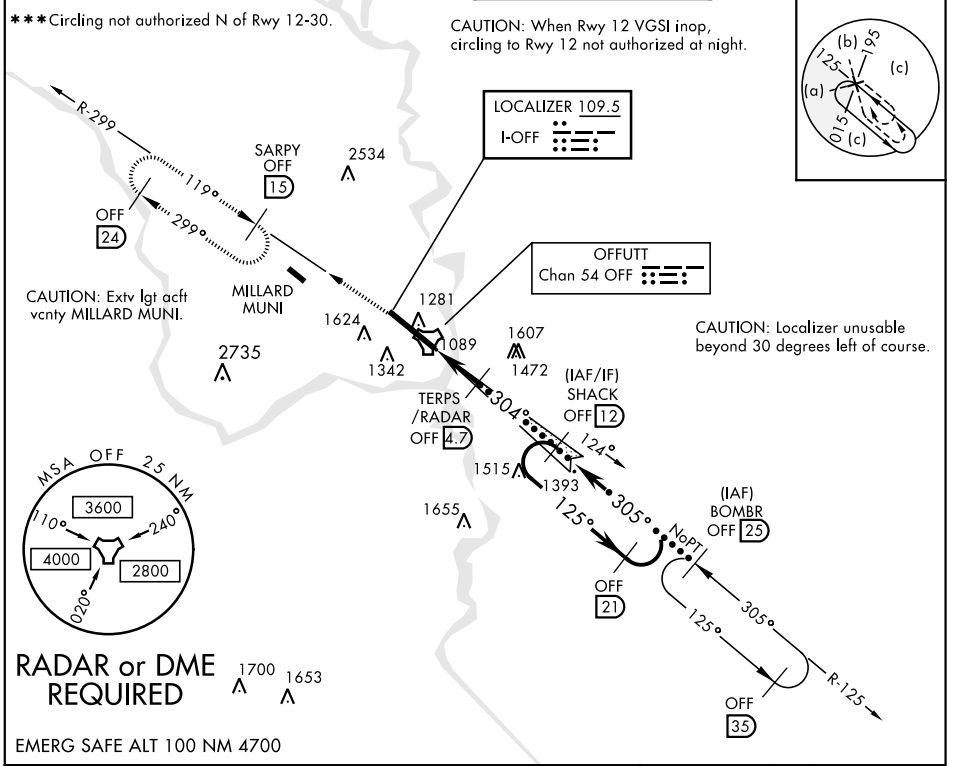
HI-ILS or LOC Z RWY 30

LOC I-OFF 109.5	APCH CRS 304°	Rwy Ldg 10,612 TDZE 985 Arprt Elev 1049	JAL-544 [USAF]	OFFUTT AFB (KOFF)
---------------------------	-------------------------	--	----------------	-------------------

A1
MISSED APPROACH: Climb to 3000 via OFF TACAN R-299 to SARPY and hold.

* When ALS inop, increase CAT CDE RVR to 40 and vis to ¾ mile.
 ** When ALS inop, increase CAT CDE RVR to 55 and vis to 1 mile.

ATIS 126.025 273.5	OMAHA APP CON E 124.5 263.0 W 120.1 354.05	OFFUTT TOWER 123.7 279.625	GND CON 121.7 289.4
------------------------------	--	--------------------------------------	-------------------------------



3000 OFF R-299	SARPY OFF (15)	† LOC Only	ELEV 1049	TDZE 985
CATEGORY	C	D	E	
S-ILS 30 *	1185/24	200 (200-½)		
S-LOC 30 **	1360/35	375 (400-¾)		
CIRCLING ***	1680-1¾ 631 (700-1¾)	1940-3	891	(900-3)
FAF to MAP 3.8 NM				
Knots	120	140	160	180 200
Min:Sec	1:54	1:38	1:26	1:16 1:08

HI-ILS or LOC Z RWY 30

NC-2, 25 FEB 2021 to 25 MAR 2021

NC-2, 25 FEB 2021 to 25 MAR 2021