

HI-TACAN Z RWY 12

| | | | | |
|-----------------------------|-------------------------|---|----------------|-------------------|
| TACAN OFF Chan 54 | APCH CRS 119° | Rwy ldg 10,696 TDZE 1049 Arprt Elev 1049 | JAL-544 [USAF] | OFFUTT AFB (KOFF) |
|-----------------------------|-------------------------|---|----------------|-------------------|

* When ALS inop, increase CAT CDE vis to 1 1/4 miles.
 ** Circling not authorized N of Rwy 12-30.



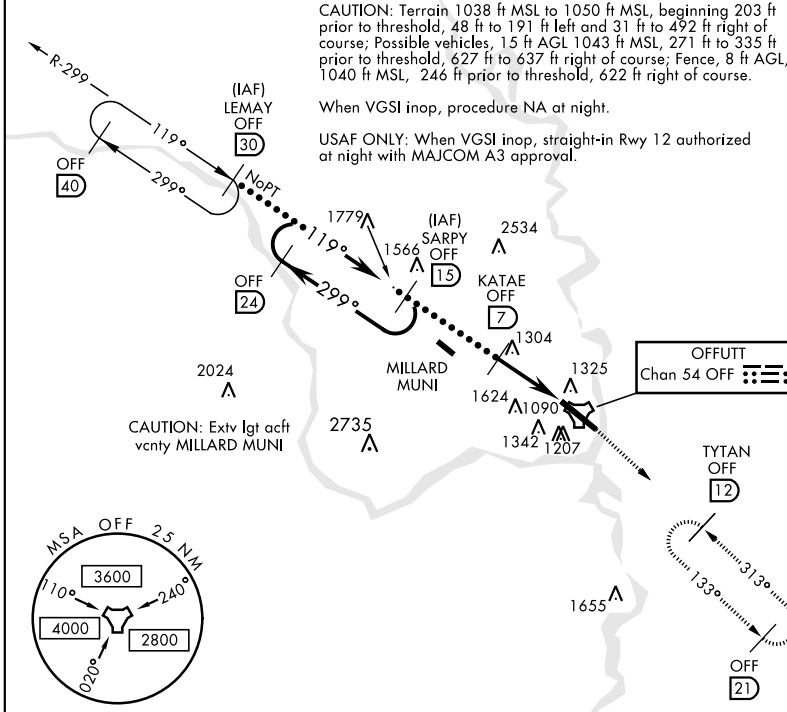
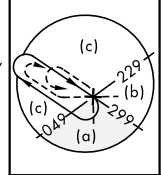
MISSED APPROACH: Climb to 3000 via OFF TACAN R-133 to TYTAN and hold.

| | | | |
|------------------------------|--|--------------------------------------|-------------------------------|
| ATIS 126.025 273.5 | OMAHA APP CON E 124.5 263.0 W 120.1 354.05 | OFFUTT TOWER 123.7 279.625 | GND CON 121.7 289.4 |
|------------------------------|--|--------------------------------------|-------------------------------|

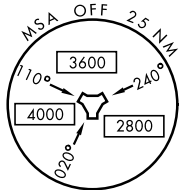
CAUTION: Terrain 1038 ft MSL to 1050 ft MSL, beginning 203 ft prior to threshold, 48 ft to 191 ft left and 31 ft to 492 ft right of course; Possible vehicles, 15 ft AGL 1043 ft MSL, 271 ft to 335 ft prior to threshold, 627 ft to 637 ft right of course; Fence, 8 ft AGL, 1040 ft MSL, 246 ft prior to threshold, 622 ft right of course.

When VGSI inop, procedure NA at night.

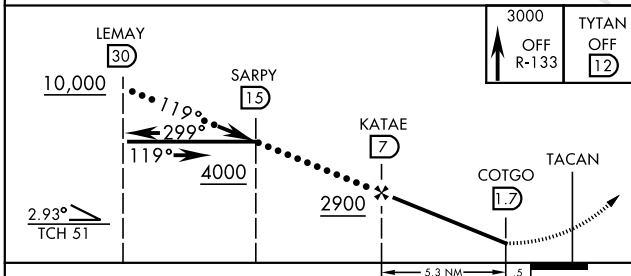
USAF ONLY: When VGSI inop, straight-in Rwy 12 authorized at night with MAJCOM A3 approval.



CAUTION: Extv lgt acft vcnty MILLARD MUNI



EMERG SAFE ALT 100 NM 4700



| | |
|-----------|-----------|
| ELEV 1049 | TDZE 1049 |
|-----------|-----------|

HIRL Rwy 12-30

Rwy 12 ldg 10,696'
Rwy 30 ldg 10,612'
Rwy 12-30 ALS nstd

| | | | |
|------------|-------------------------------|-----------------|-------------|
| CATEGORY | C | D | E |
| S-12 * | 1620-1 1/4 | 571 (600-1 1/4) | |
| CIRCLING** | 1680-1 3/4 631 (700-1 3/4) | 1940-3 | 891 (900-3) |

HI-TACAN Z RWY 12

NC-2, 25 FEB 2021 to 25 MAR 2021

NC-2, 25 FEB 2021 to 25 MAR 2021