

OMAHA, NEBRASKA

# TACAN Y RWY 12

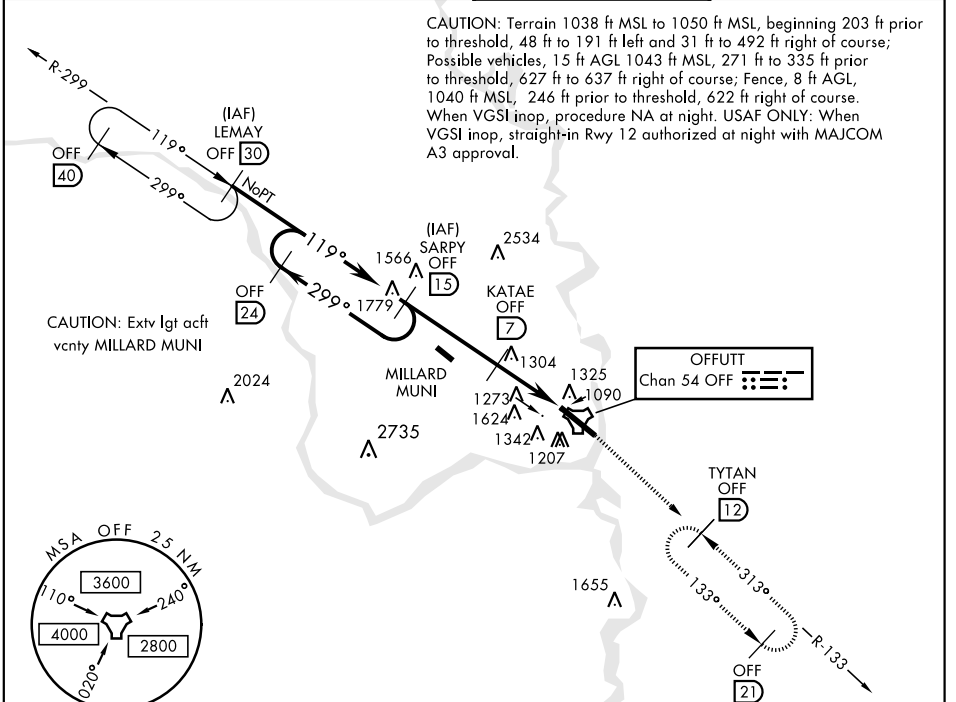
TACAN OFF Chan <b>54</b>	APCH CRS <b>119°</b>	Rwy Ldg <b>10,696</b> TDZE <b>1049</b> Arprt Elev <b>1049</b>	AL-544 [USAF]	OFFUTT AFB (KOFF)
-----------------------------	-------------------------	---	---------------	-------------------

▼ \* When ALS inop, increase CAT AB RVR to 55, CAT CDE vis to 1¾ miles.  
 \*\* Circling not authorized N of Rwy 12-30.



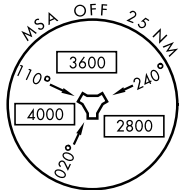
MISSED APPROACH: Climb to 3000 via OFF TACAN R-133 to TYTAN and hold.

ATIS <b>126.025 273.5</b>	OMAHA APP CON <b>E 124.5 263.0</b> <b>W 120.1 354.05</b>	OFFUTT TOWER <b>123.7 279.625</b>	GND CON <b>121.7 289.4</b>
------------------------------	--	--------------------------------------	-------------------------------

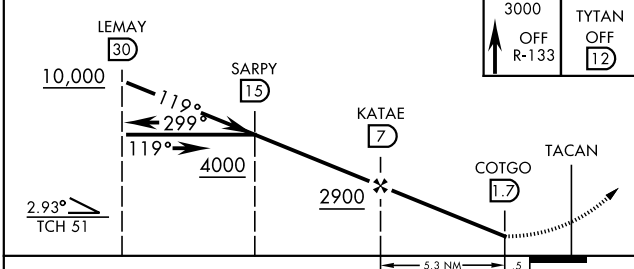


CAUTION: Terrain 1038 ft MSL to 1050 ft MSL, beginning 203 ft prior to threshold, 48 ft to 191 ft left and 31 ft to 492 ft right of course; Possible vehicles, 15 ft AGL 1043 ft MSL, 271 ft to 335 ft prior to threshold, 627 ft to 637 ft right of course; Fence, 8 ft AGL, 1040 ft MSL, 246 ft prior to threshold, 622 ft right of course. When VGSI inop, procedure NA at night. USAF ONLY: When VGSI inop, straight-in Rwy 12 authorized at night with MAJCOM A3 approval.

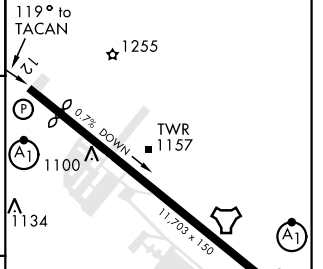
CAUTION: Extv lgt acft venty MILLARD MUNI



EMERG SAFE ALT 100 NM 4700



ELEV 1049	TDZE 1049
HIRL Rwy 12-30	



CATEGORY	A	B	C	D	E
S-12*	1620/50 571 (600-1)	1620-1¼ 571 (600-1¼)	1620-1¼ 571 (600-1¼)	1940-3 891 (900-3)	1940-3 891 (900-3)
CIRCLING**	1620-1 571 (600-1)	1680-1¾ 631 (700-1¾)	1680-1¾ 631 (700-1¾)	1940-3 891 (900-3)	1940-3 891 (900-3)

Rwy 12 Ldg 10,696'  
 Rwy 30 Ldg 10,612'  
 Rwy 12-30 ALS nstd

OMAHA, NEBRASKA

41° 07' N-95° 54' W

OFFUTT AFB (KOFF)

Amdt 5 13SEP18

# TACAN Y RWY 12

NC-2, 25 FEB 2021 to 25 MAR 2021

NC-2, 25 FEB 2021 to 25 MAR 2021