

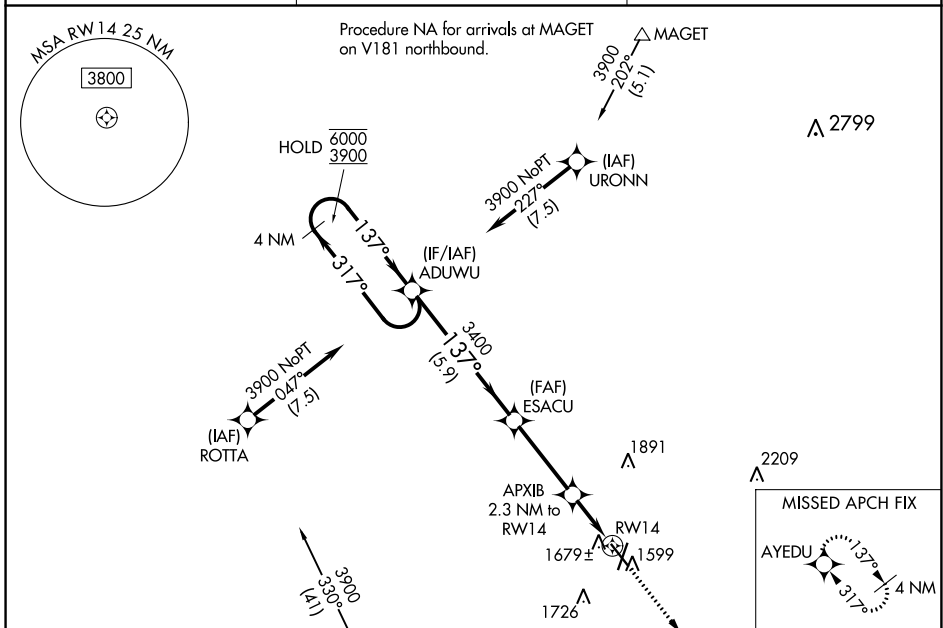
WAAS CH 62915 W14A	APP CRS 137°	Rwy Idg TDZE Apt Elev	5160 1543 1573
--	------------------------	-----------------------------	---

RNAV (GPS) RWY 14

NORFOLK RGNL/KARL STEFAN MEMORIAL FIELD (OFK)

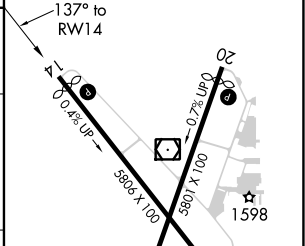
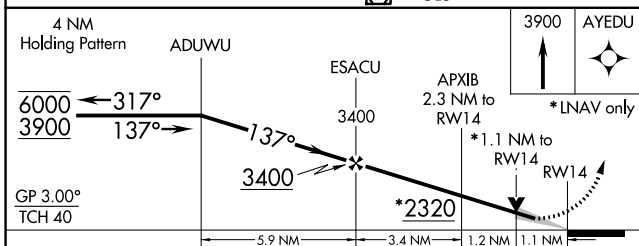
RNP APCH.	For uncompensated Baro-VNAV systems, LNAV/VNAV NA below -23°C or above 54°C.	MISSED APPROACH: Climb to 3900 direct AYEDU and hold.
-----------	---	--

ASOS 119.025	MINNEAPOLIS CENTER 125.025 235.625	UNICOM 122.7 (CTAF) 0
------------------------	--	---------------------------------

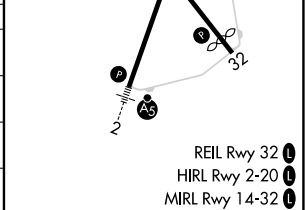


Procedure NA for arrival on OLU VOR/DME airway radials 257 CW 308.

ELEV 1573	TDZE 1543
-----------	-----------



CATEGORY	A	B	C	D
LPV DA		1808-1	265 (300-1)	
LNAV/VNAV DA		1860-1	317 (400-1)	
LNAV MDA	1940-1	397 (400-1)	1940-1½	397 (400-1½)
CIRCLING	2060-1 487 (500-1)	2100-1 527 (600-1)	2260-2 687 (700-2)	2360-2½ 787 (800-2½)



NC-2, 25 FEB 2021 to 25 MAR 2021

NC-2, 25 FEB 2021 to 25 MAR 2021

REIL Rwy 32
HIRL Rwy 2-20
MIRL Rwy 14-32