

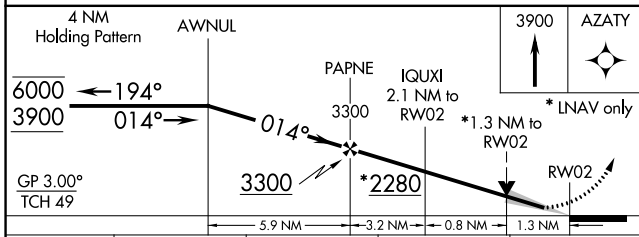
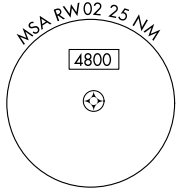
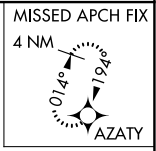
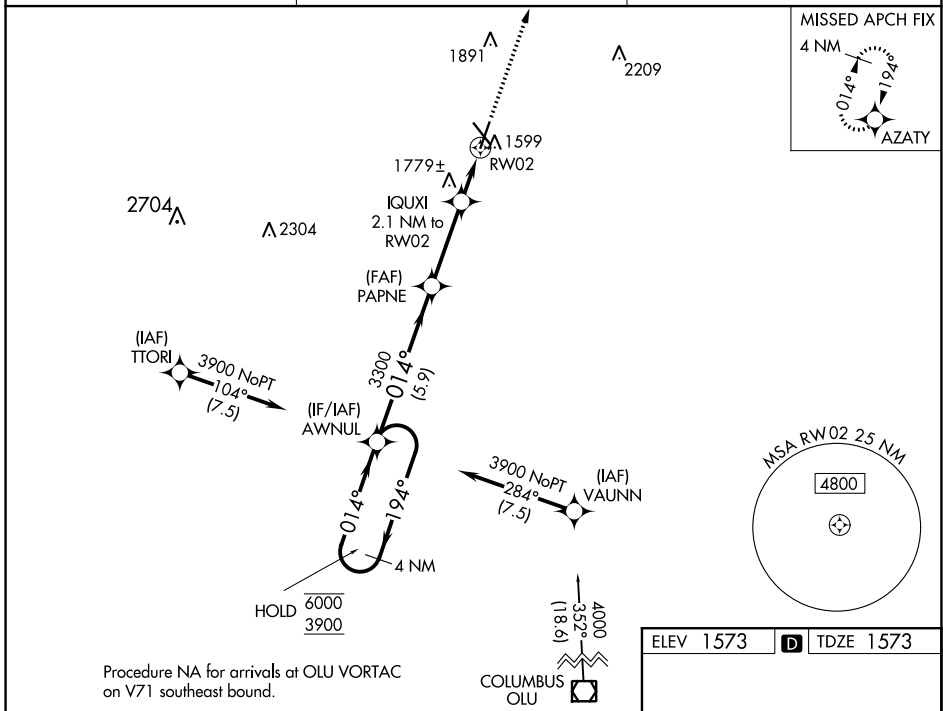
WAAS CH 50120 W02A	APP CRS 014°	Rwy Idg TDZE Apt Elev	5801 1573 1573
--	------------------------	-----------------------------	---

RNAV (GPS) RWY 2

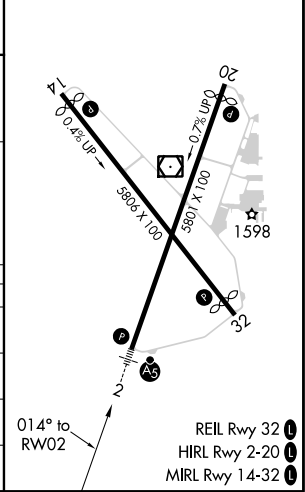
NORFOLK RGNL/KARL STEFAN MEMORIAL FIELD (OFK)

RNP APCH. ▼ ▲ For uncompensated Baro-VNAV systems, LNAV/VNAV NA below -21°C or above 54°C.	MALSR 	MISSED APPROACH: Climb to 3900 direct AZATY and hold.
--	-----------	---

ASOS 119.025	MINNEAPOLIS CENTER 125.025 235.625	UNICOM 122.7 (CTAF) 0
------------------------	--	---------------------------------



ELEV 1573	TDZE 1573
-----------	-----------



CATEGORY	A	B	C	D
LPV DA		1773-½	200 (200-½)	
LNAV/VNAV DA		2038-1	465 (500-1)	
LNAV MDA	2040-½	467 (500-½)	2040-1	467 (500-1)
CIRCLING	2060-1 487 (500-1)	2100-1 527 (600-1)	2260-2 687 (700-2)	2360-2½ 787 (800-2½)

RNAV (GPS) RWY 2

NC-2, 25 FEB 2021 to 25 MAR 2021

NC-2, 25 FEB 2021 to 25 MAR 2021