

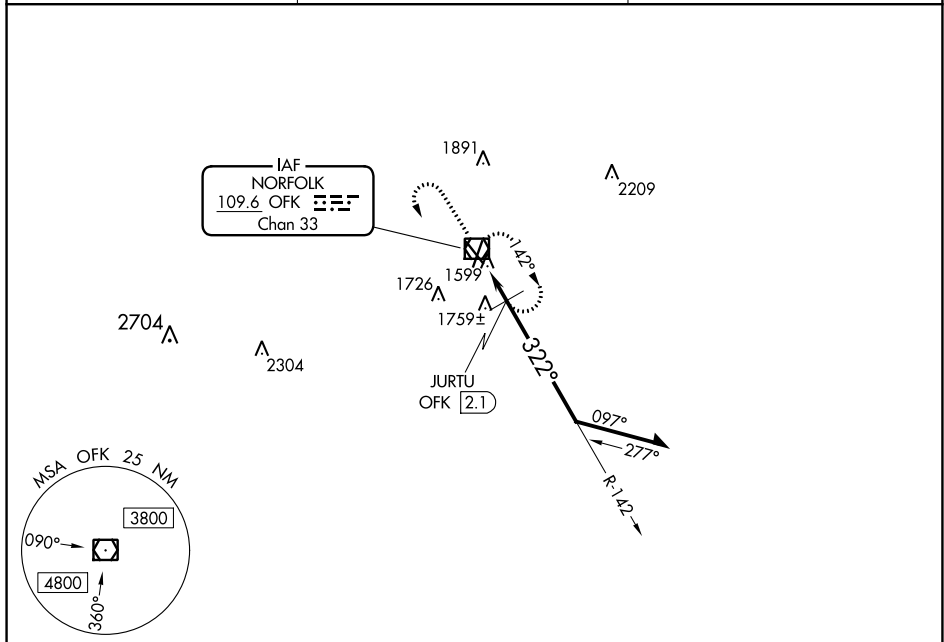
VOR/DME OFK 109.6 Chan 33	APP CRS 322°	Rwy Idg TDZE Apt Elev	5160 1560 1573
---	------------------------	-----------------------------	---

VOR RWY 32

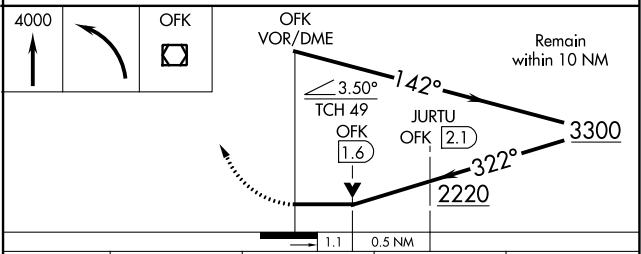
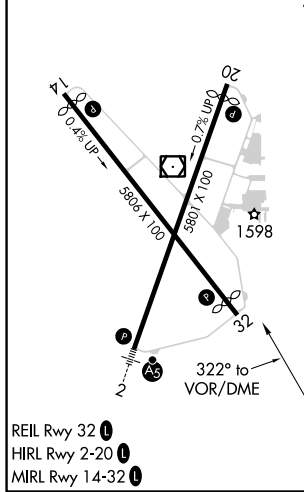
NORFOLK RGNL/KARL STEFAN MEMORIAL FIELD (OFK)

<p>V A Rwy 32 helicopter visibility reduction below ¼ SM NA.</p>	<p>MISSED APPROACH: Climb to 4000 then left turn direct OFK VOR/DME and hold.</p>
--	---

<p>ASOS 119.025</p>	<p>MINNEAPOLIS CENTER 125.025 235.625</p>	<p>UNICOM 122.7 (CTAF) 0</p>
--------------------------------	--	--



ELEV 1573	D	TDZE 1560
------------------	----------	------------------



CATEGORY	A	B	C	D
S-32	2220-1	660 (700-1)	2220-1 ⁷ / ₈	660 (700-1 ⁷ / ₈)
C CIRCLING	2220-1	647 (700-1)	2260-2	2360-2 ¹ / ₂ 787 (800-2 ¹ / ₂)
JURTU FIX MINIMUMS (DME REQUIRED)				
S-32	2020-1	460 (500-1)	2020-1 ³ / ₈	460 (500-1 ³ / ₈)
C CIRCLING	2060-1	2100-1	2260-2	2360-2 ¹ / ₂ 487 (500-1) 527 (600-1) 687 (700-2) 787 (800-2 ¹ / ₂)

VOR RWY 32

NC-2, 25 FEB 2021 to 25 MAR 2021

NC-2, 25 FEB 2021 to 25 MAR 2021