

WAAS CH 53303 W26A	APP CRS 263°	Rwy Idg TDZE Apt Elev	5102 3254 3279
--	------------------------	-----------------------------	---

RNAV (GPS) RWY 26

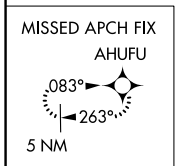
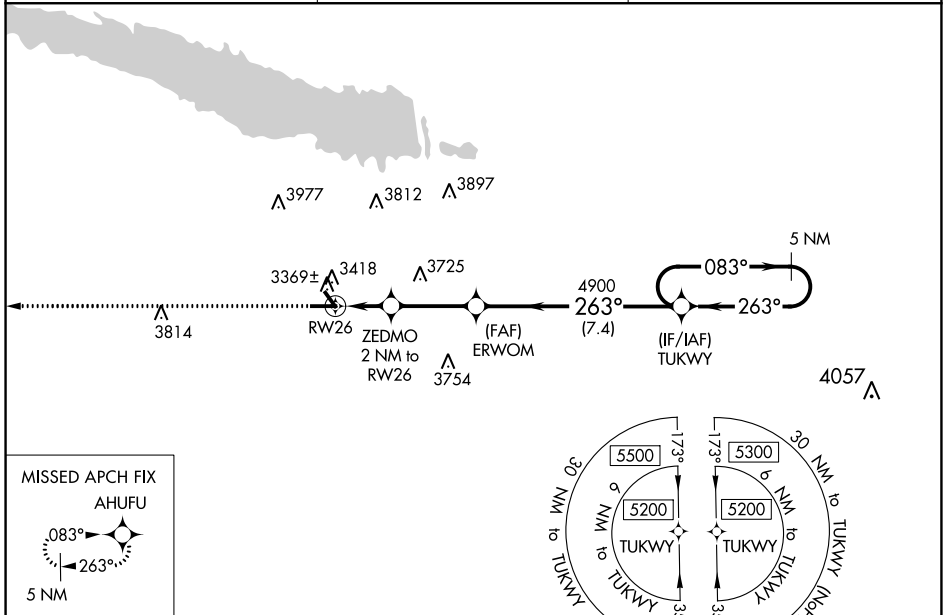
SEARLE FIELD (OGA)

RNP APCH.

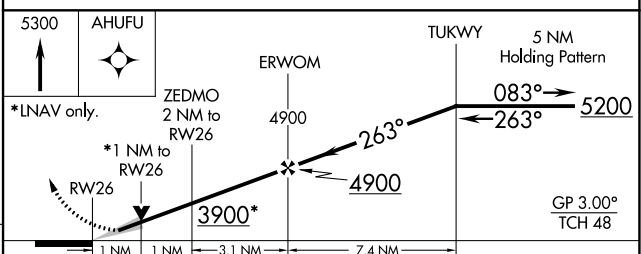
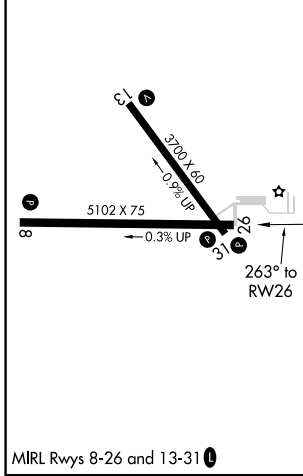
▼ When local altimeter setting not received, use Imperial altimeter setting and increase all DA 86 feet and all MDA 100 feet, increase LPV all Cats visibility 1/8 mile, LNAV/VNAV all Cats visibility 1/4 mile. VDP and Baro-VNAV NA when using Imperial altimeter setting. For uncompensated Baro-VNAV systems, LNAV/VNAV NA below -21°C or above 54°C.

MISSED APPROACH:
Climb to 5300 direct AHUFU and hold.

AWOS-3 121.275	DENVER CENTER 132.7 397.85	UNICOM 122.8 (CTAF) ①
--------------------------	--------------------------------------	---------------------------------



ELEV 3279	TDZE 3254
------------------	------------------



CATEGORY	A	B	C	D
LPV DA	3504-1	250 (300-1)		NA
LNAV/VNAV DA	3540-1	286 (300-1)		NA
LNAV MDA	3620-1	366 (400-1)		NA
CIRCLING	3920-1	3960-1		NA
	641 (700-1)	681 (700-1)		

NC-2, 25 FEB 2021 to 25 MAR 2021

NC-2, 25 FEB 2021 to 25 MAR 2021