

VOR/DME SAE 110.2 Chan 39	APP CRS 266°	Rwy Idg TDZE Apt Elev 5102 3254 3279
---	------------------------	--

VOR RWY 26

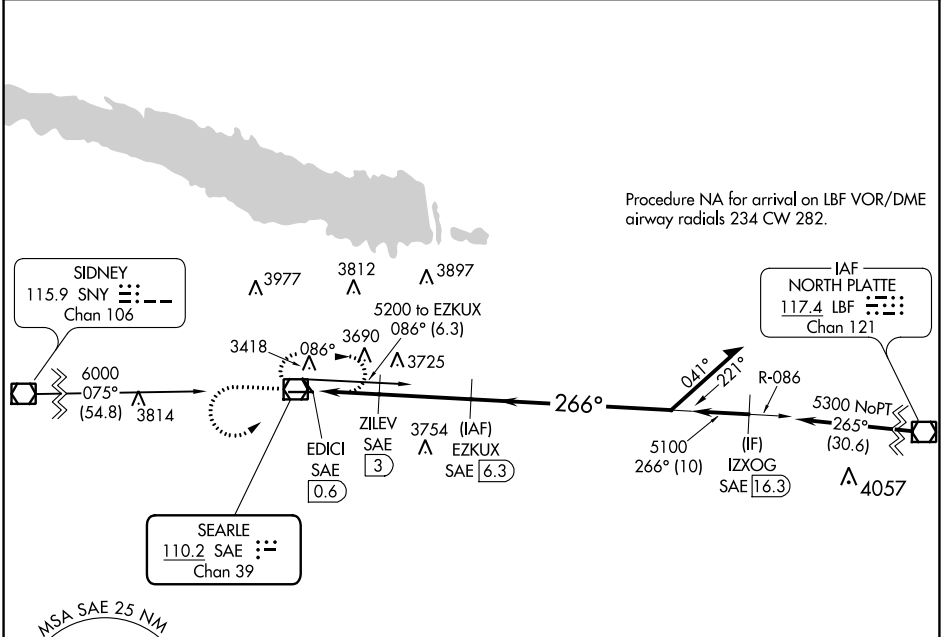
SEARLE FIELD (OGA)

DME required.

When local altimeter setting not received, use Imperial altimeter setting and increase all MDA 100 feet and increase S-26 Cat B and Circling Cat B visibility 1/4 SM.

MISSED APPROACH: Climb to 4300 then climbing left turn to 5200 direct SAE VOR/DME and hold.

AWOS-3 121.275	DENVER CENTER 132.7 397.85	UNICOM 122.8 (CTAF) 0
--------------------------	--------------------------------------	---------------------------------



NC-2, 25 FEB 2021 to 25 MAR 2021

NC-2, 25 FEB 2021 to 25 MAR 2021

4300	5200	SAE	EZKUX SAE 6.3	Remain within 10 NM
SAE VOR/DME	ZILEV SAE 3	EDICI SAE 0.6	5100	5200
2.4 NM	3.3 NM	3.16° TCH 48	266°	086°
4040	5100			
CATEGORY	A	B	C	D
S-26	3940-1	686 (700-1)	NA	NA
CIRCLING	3940-1 661 (700-1)	3960-1 681 (700-1)	NA	NA

