

WAAS CH 69528 W09A	APP CRS 089°	Rwy Idg 6006 TDZE 292 Apt Elev 302
--	------------------------	---

RNAV (GPS) RWY 9

OGDENSBURG INTL (OGS)

RNP APCH.

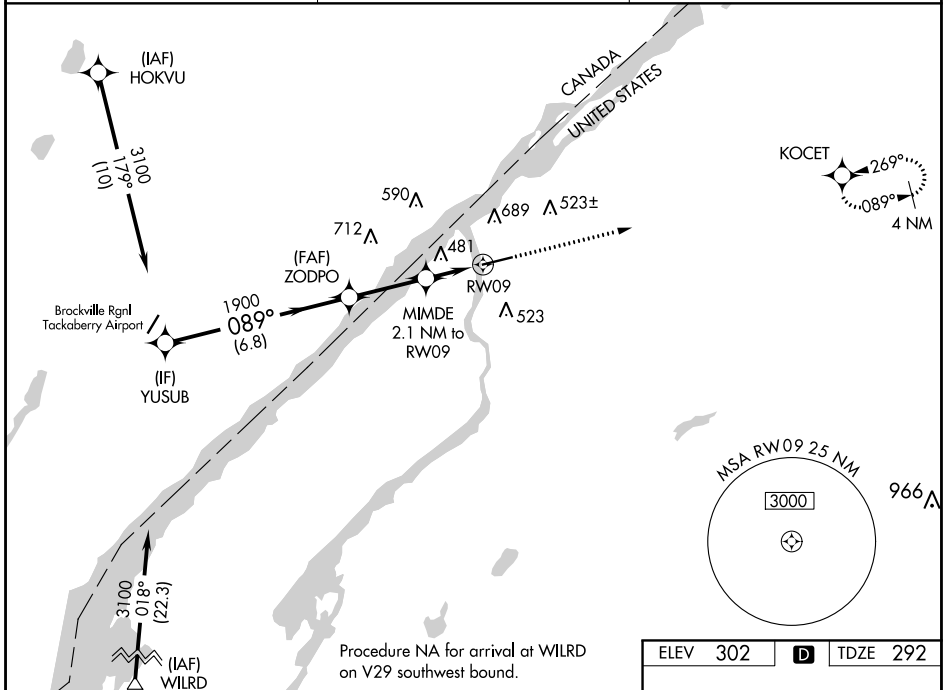
▼ Rwy 9 helicopter visibility reduction below 3/4 SM NA. For uncompensated Baro-VNAV systems, LNAV/VNAV NA below -15°C or above 54°C.

MISSED APPROACH: Climb to 2000 direct KOCET and hold.

AWOS-3
118.525

BOSTON CENTER
135.25 377.1

UNICOM
122.8 (CTAF) 0

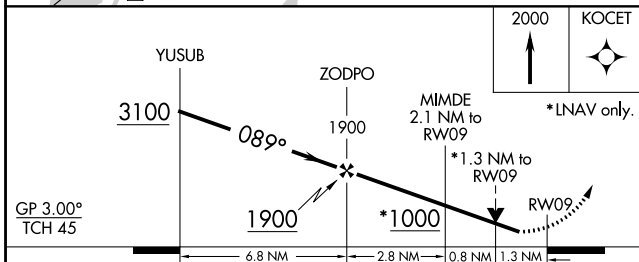


NE-2, 25 FEB 2021 to 25 MAR 2021

NE-2, 25 FEB 2021 to 25 MAR 2021

Procedure NA for arrival at WILRD on V29 southwest bound.

ELEV 302 **D** TDZE 292



CATEGORY	A	B	C	D
LPV DA		543-3/4	251 (300-3/4)	
LNAV/VNAV DA		781-13/8	489 (500-13/8)	
LNAV MDA	740-1	448 (500-1)	740-13/8	448 (500-13/8)
C CIRCLING	760-1 458 (500-1)	1000-1 698 (700-1)	1000-2 698 (700-2)	1000-21/4 698 (700-21/4)

