

|  |                        |   |
|--|------------------------|---|
| WAAS<br>CH <b>97534</b><br><b>W35A</b> | APP CRS<br><b>354°</b> | Rwy Idg <b>5100</b><br>TDZE <b>1605</b><br>Apt Elev <b>1605</b> |
|--|------------------------|---|

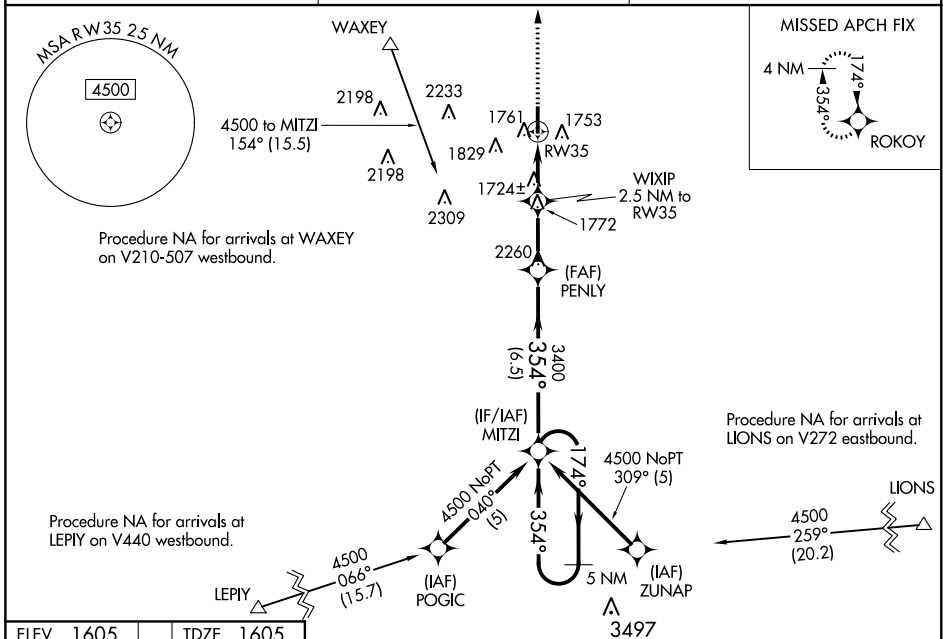
# RNAV (GPS) RWY 35

THOMAS P STAFFORD (OJA)

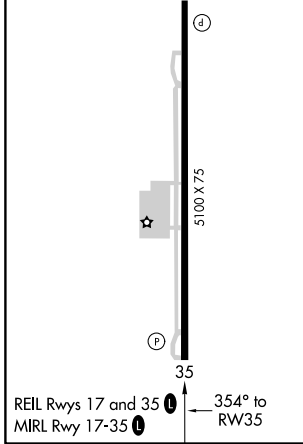
**RNP APCH.**  
 ⚠ Straight-in Rwy 35 at night, Circling Rwy 17 at night, operational VGSI required, remain on or above VGSI glidepath until threshold. Rwy 17 helicopter visibility below 1 SM NA. When local altimeter setting not received, use Clinton Rgnl altimeter setting: increase all MDA 40 feet and visibility Cat C ¼ mile.

**MISSED APPROACH:**  
 Climb to 4000 direct ROKOY and hold.

|                          |  |                                 |
|--------------------------|--|---------------------------------|
| AWOS-3<br><b>118.575</b> | FORT WORTH CENTER<br><b>128.4 269.37</b> | UNICOM<br><b>122.8 (CTAF) 0</b> |
|--------------------------|--|---------------------------------|



|           |           |
|-----------|-----------|
| ELEV 1605 | TDZE 1605 |
|-----------|-----------|



| CATEGORY | A                  | B                          | C                          | D  |
|----------|--------------------|----------------------------|----------------------------|----|
| LP MDA   | 1980-1 375 (400-1) |                            |                            | NA |
| LNAV MDA | 2020-1 415 (500-1) | 2020-1 1/8 415 (500-1 1/8) |                            | NA |
| CIRCLING | 2080-1 475 (500-1) | 2140-1 535 (600-1)         | 2380-2 1/4 775 (800-2 1/4) | NA |

SC-1, 25 FEB 2021 to 25 MAR 2021

SC-1, 25 FEB 2021 to 25 MAR 2021