

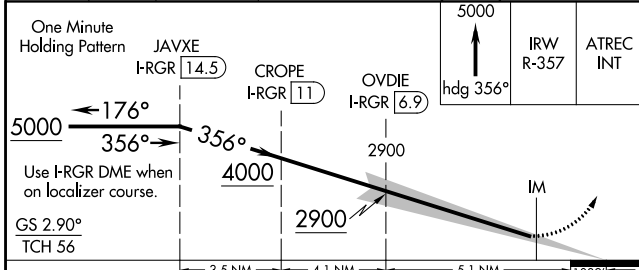
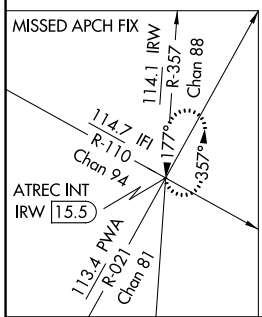
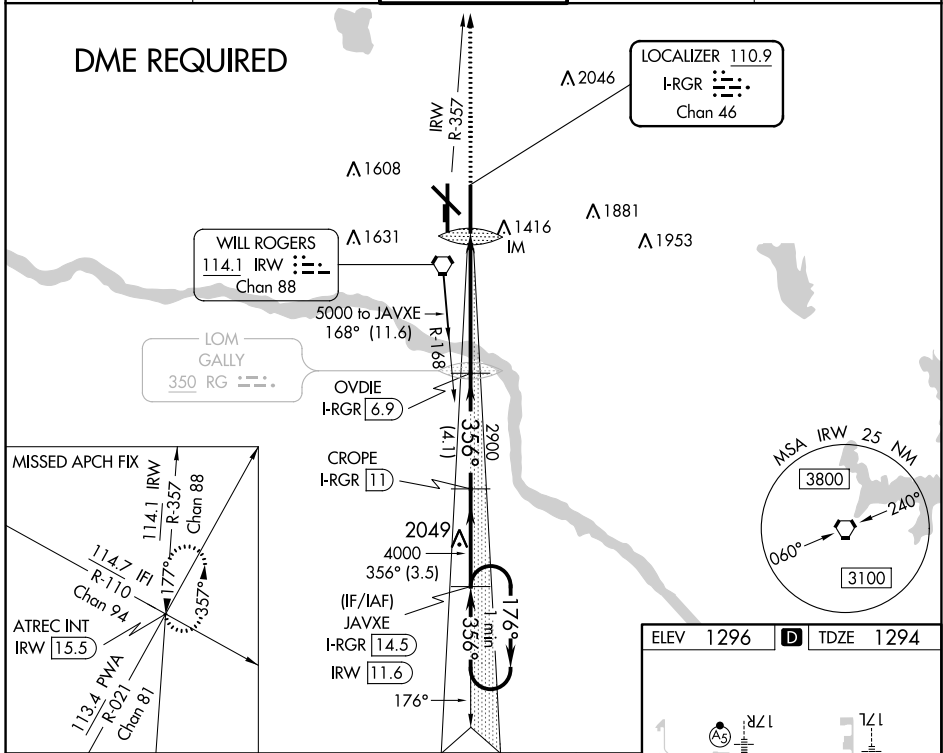
LOC/DME I-RGR 110.9 Chan 46	APP CRS 356°	Rwy Idg 9802 TDZE 1294 Apt Elev 1296
-------------------------------------------------	------------------------	-----------------------------------------------------------------

ILS RWY 35R (SA CAT I)

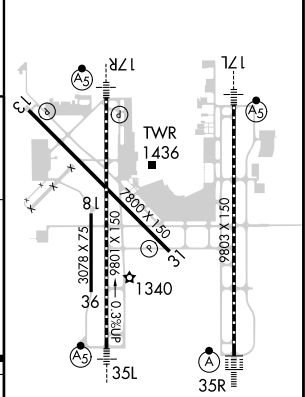
WILL ROGERS WORLD (OKC)

Simultaneous approach authorized. Requires specific OPSPEC, MSPEC, or LOA approval and use of HUD to DH. DME required.		MISSED APPROACH: Climb to 5000 on heading 356° and on IRW VORTAC R-357 to ATREC INT/IRW 15.5 DME and hold, continue climb-in-hold to 5000.		
		D-ATIS 125.85	OKE CITY APP CON 124.6 266.8	ROGERS TOWER 119.35 269.45

D-ATIS 125.85	OKE CITY APP CON 124.6 266.8	ROGERS TOWER 119.35 269.45	GND CON 121.9 348.6	CLNC DEL 124.35
-------------------------	----------------------------------------	--------------------------------------	-------------------------------	---------------------------



ELEV 1296	D TDZE 1294
-----------	--------------------



CATEGORY	A	B	C	D
S-ILS 35R	RA 178/14		150 DA 1444	
SA CATEGORY I ILS - SPECIAL AIRCREW & AIRCRAFT CERTIFICATION REQUIRED				

REIL Rwy 13 and 31
 TDZ/CL Rwy 35R
 MRL Rwy 13-31
 IRL Rwy 17L-35R and 17R-35L

SC-1, 25 FEB 2021 to 25 MAR 2021

SC-1, 25 FEB 2021 to 25 MAR 2021