

LOC/DME I-EXR 110.9 Chan 46	APP CRS 176°	Rwy Idg TDZE Apt Elev	9802 1287 1296
--	------------------------	-----------------------------	---

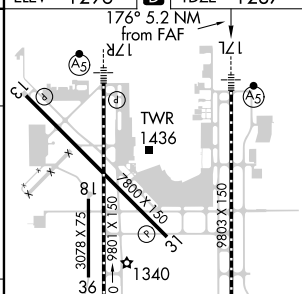
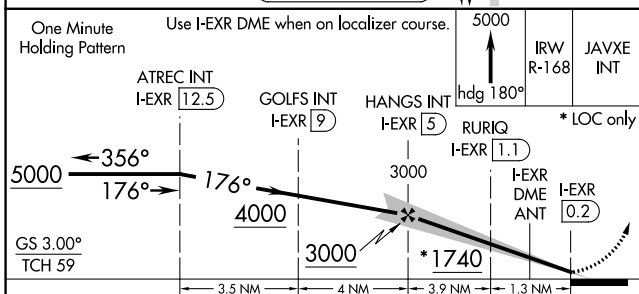
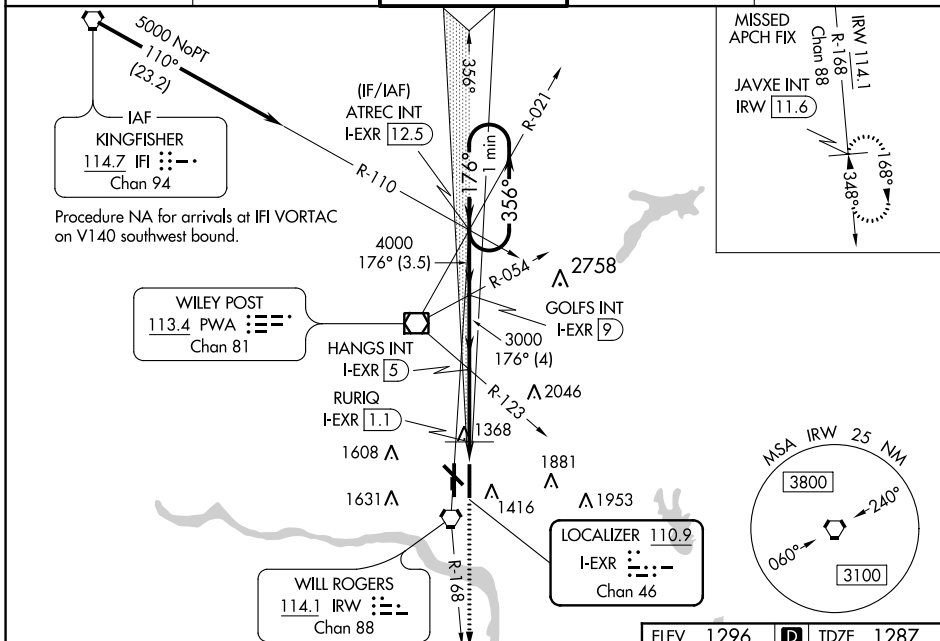
ILS or LOC RWY 17L

WILL ROGERS WORLD (OKC)

ADF or DME required. For inop ALS, increase S-ILS 17L Cat E visibility to RVR 4000 and S-LOC 17L Cat E visibility to 1 3/8 SM and RURIQ Fix Minimums S-LOC 17L Cat E visibility to RVR 6000. Simultaneous approach authorized. ** RVR 1800 authorized with use of FD or AP or HUD to DA.

MALS
MISSED APPROACH: Climb to 5000 on heading 180° and on IRW VORTAC R-168 to JAVXE INT/IRW 11.6 DME and hold, continue climb-in-hold to 5000.

D-ATIS 125.85	OKE CITY APP CON 124.6 266.8	ROGERS TOWER 119.35 269.45	GND CON 121.9 348.6	CLNC DEL 124.35
-------------------------	--	---	-------------------------------	---------------------------



CATEGORY	A	B	C	D	E
S-ILS 17L **	1487/24 200 (200-1/2)				
S-LOC 17L	1740/24	453 (500-1/2)	1740/45	453 (500-3/4)	
CIRCLING	1740-1 444 (500-1)	1760-1 464 (500-1)	1960-1 3/4 664 (700-1 3/4)	2000-2 1/4 704 (800-2 1/4)	2240-3 944 (1000-3)
RURIQ FIX MINIMUMS					
S-LOC 17L	1680/24	393 (400-1/2)	1680/35	393 (400-3/4)	
CIRCLING	1740-1 444 (500-1)	1760-1 464 (500-1)	1960-1 3/4 664 (700-1 3/4)	2000-2 1/4 704 (800-2 1/4)	2240-3 944 (1000-3)

MIRL Rwy 13-31	35L
TDZ/CL Rwy 35R	35R
HIRL Rwys 17L-35R and 17R-35L	
REIL Rwys 13 and 31	
FAF to MAP 5.2 NM	
Knots	60 90 120 150 180
Min:Sec	5:12 3:28 2:36 2:05 1:44

SC-1, 25 FEB 2021 to 25 MAR 2021

SC-1, 25 FEB 2021 to 25 MAR 2021