

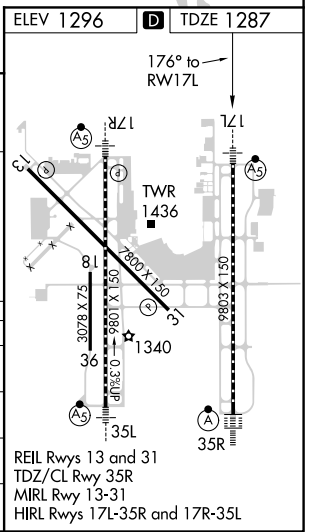
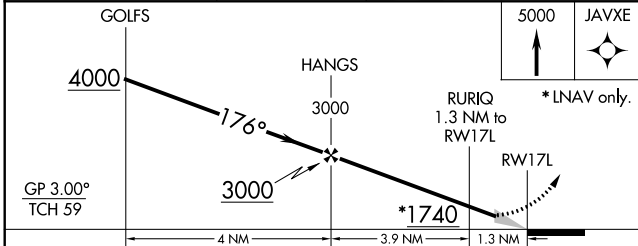
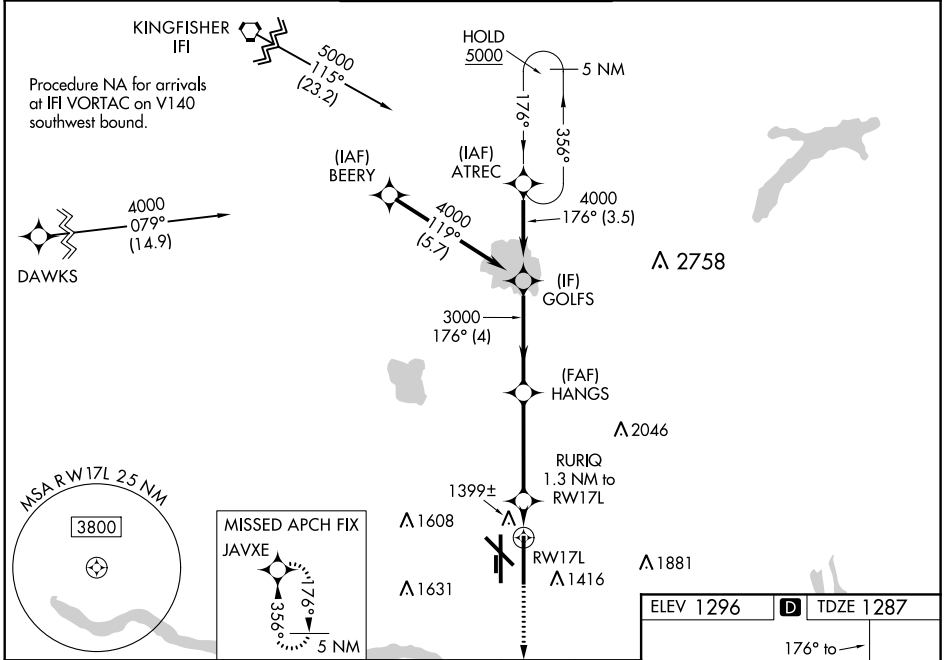
WAAS CH 56503 W17B	APP CRS 176°	Rwy Idg 9802 TDZE 1287 Apt Elev 1296
--	------------------------	---

RNAV (GPS) Y RWY 17L

WILL ROGERS WORLD (OKC)

<p>For uncompensated Baro-VNAV systems, LNAV/VNAV NA below -12°C (11°F) or above 54°C (130°F). DME/DME RNP-0.3 NA. For inop MALSRS, increase LPV Cat E visibility to RVR 4000, LNAV/VNAV Cat E visibility to RVR 4500, and LNAV all Cats visibility to RVR 5500. Simultaneous approach authorized with Rwy 17R. LNAV procedure NA during simultaneous operations. Use of FD or AP providing RNAV track guidance required during simultaneous operations. **RVR 1800 authorized with use of FD or AP or HUD to DA.</p>	<p>MALSRS</p>	<p>MISSED APPROACH: Climb to 5000 direct JAVXE and hold, continue climb-in-hold to 5000.</p>

D-ATIS 125.85	OKE CITY APP CON 124.6 266.8	ROGERS TOWER 119.35 269.45	GND CON 121.9 348.6	CLNC DEL 124.35
-------------------------	--	--------------------------------------	-------------------------------	---------------------------



CATEGORY	A	B	C	D	E
LPV DA**	1487/24		200 (200-½)		
LNAV/VNAV DA	1590/24		303 (300-½)		
LNAV MDA	1660/24		1660/35		373 (400-⅝)
C CIRCLING	1740-1	1760-1	1960-1¾	2000-2¼	2240-3
	444 (500-1)	464 (500-1)	664 (700-1¾)	704 (800-2¼)	944 (1000-3)

SC-1, 25 FEB 2021 to 25 MAR 2021

SC-1, 25 FEB 2021 to 25 MAR 2021