

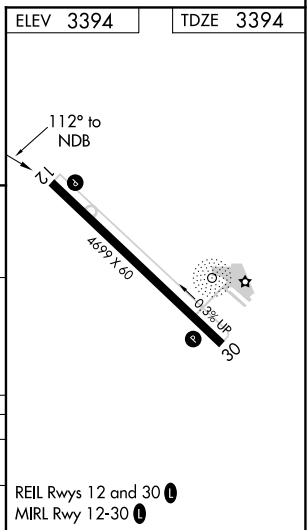
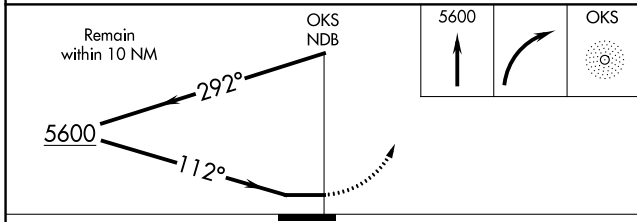
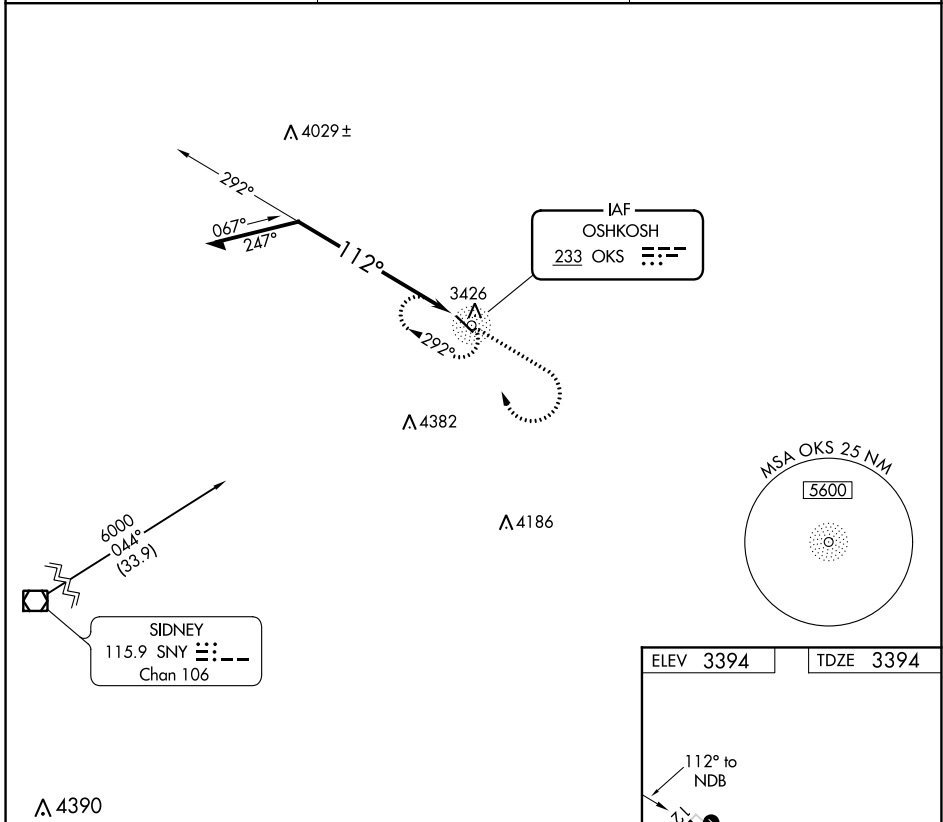
NDB OKS 233	APP CRS 112°	Rwy Idg TDZE Apt Elev	4699 3394 3394
-----------------------	------------------------	-----------------------------	---

NDB RWY 12

GARDEN COUNTY/KING RHILEY FIELD (OKS)

NA	Use Ogallala altimeter setting.	MISSED APPROACH: Climb to 5600 then right turn direct OKS NDB and hold.
-----------	---------------------------------	---

OGA AWOS-3 121.275	DENVER CENTER 118.475 225.4	UNICOM 122.8 (CTAF) 0
------------------------------	---------------------------------------	---------------------------------



CATEGORY	A	B	C	D
S-12	4600-1¼ 1206 (1300-1¼)	4600-1½ 1206 (1300-1½)	NA	
CIRCLING	4600-1¼ 1206 (1300-1¼)	4600-1½ 1206 (1300-1½)	NA	

NC-2, 25 FEB 2021 to 25 MAR 2021

NC-2, 25 FEB 2021 to 25 MAR 2021