

| | | |
|-------------|----------|-------------|
| APP CRS | Rwy Idg | 8013 |
| 178° | TDZE | 982 |
| | Apt Elev | 985 |

RNAV (RNP) Z RWY 18

EPPLEY AIRFIELD (OMA)

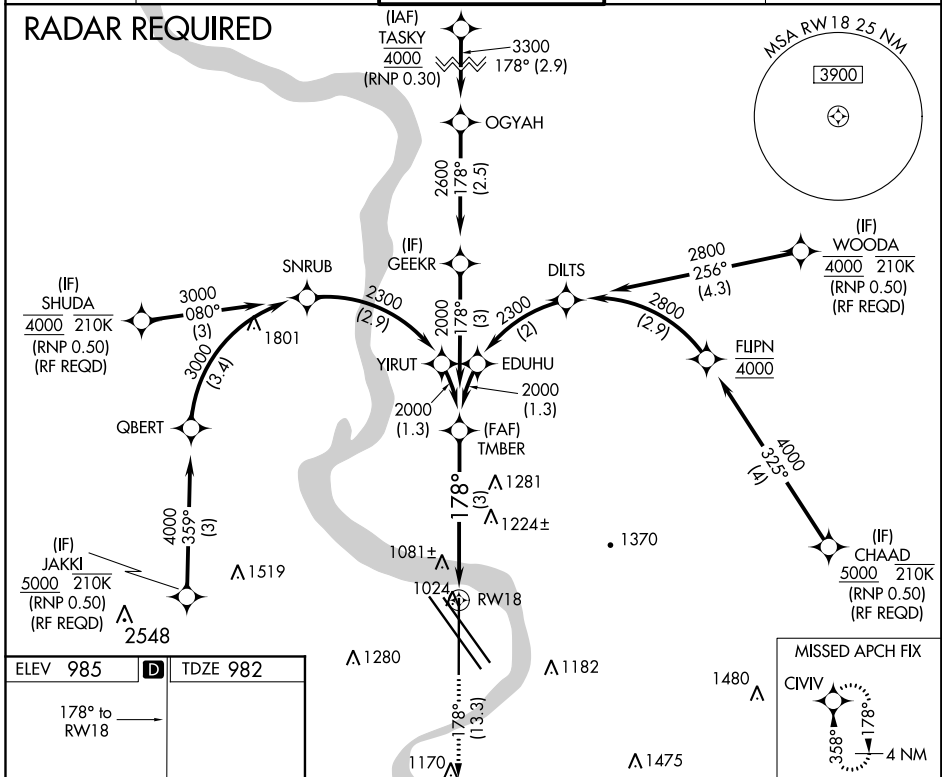
▽ For uncompensated Baro-VNAV systems, procedure NA below -17°C (2°F) or above 54°C (130°F). For inoperative ALS, increase RNP 0.15 all Cats visibility to 1½ and RNP 0.30 all Cats visibility to 2. GPS required.



MISSED APPROACH: Climb to 3000 on track 178° to CIVIL and hold.

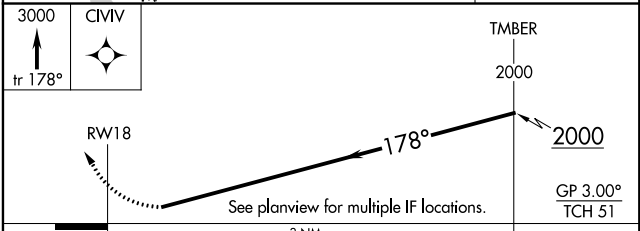
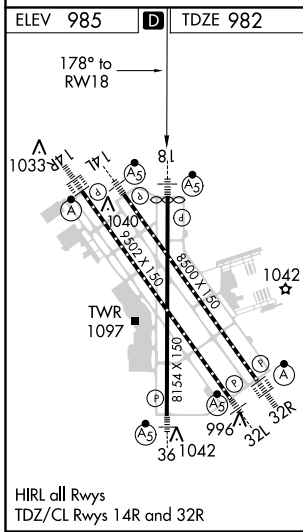
| | | | | |
|--------------|---------------------|--------------------|--------------|--------------|
| D-ATIS | OMAHA APP CON | OMAHA TOWER | GND CON | CLNC DEL |
| 120.4 | 120.1 354.05 | 132.1 256.9 | 121.9 | 119.9 |

RADAR REQUIRED



NC-2, 25 FEB 2021 to 25 MAR 2021

NC-2, 25 FEB 2021 to 25 MAR 2021



| CATEGORY | A | B | C | D |
|-------------|---|---------|--------------|---|
| RNP 0.15 DA | | 1341/40 | 359 (400-¾) | |
| RNP 0.30 DA | | 1576-1½ | 594 (600-1½) | |

AUTHORIZATION REQUIRED