

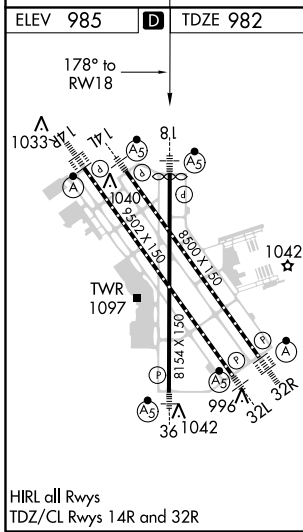
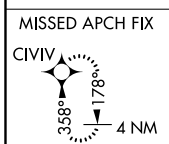
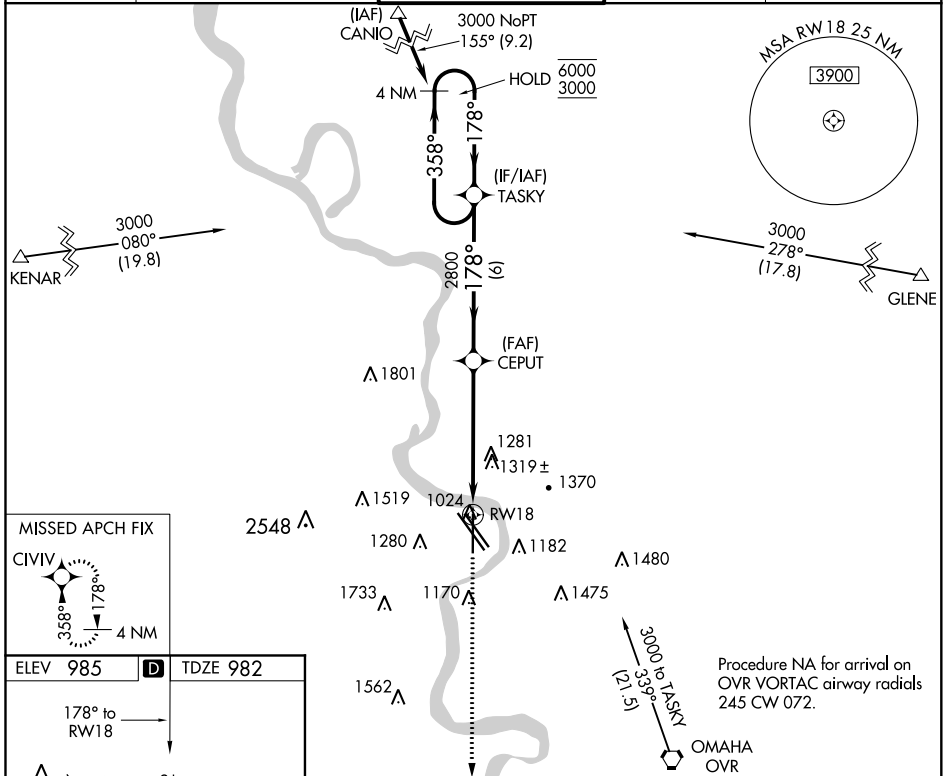
# RNAV (GPS) Y RWY 18

EPPLEY AIRFIELD (OMA)

WAAS CH <b>65617</b> <b>W18A</b>	APP CRS <b>178°</b>	Rwy Idg TDZE <b>982</b> Apt Elev <b>985</b>	<b>8013</b>
--	------------------------	---	-------------

RNP APCH.	MALSR	MISSED APPROACH: Climb to 3000 direct CIVIV and hold.
For uncompensated Baro-VNAV systems, procedure NA below -19°C or above 54°C. # RVR 1800 authorized with use of FD or AP or HUD to DA.		

D-ATIS <b>120.4</b>	OMAHA APP CON <b>120.1 354.05</b>	OMAHA TOWER <b>132.1 256.9</b>	GND CON <b>121.9</b>	CLNC DEL <b>119.9</b>
------------------------	--------------------------------------	-----------------------------------	-------------------------	--------------------------



4 NM Holding Pattern 6000 ← 358° 3000 → 178°	TASKY		CEPUT	3000 CIVIV
	GP 3.00° TCH 52		2800 *1.5 NM to RWY18 *LNAV only	
6 NM		4.1 NM		1.5
CATEGORY LPV DA# LNAV/VNAV DA LNAV MDA	A	B	C	D
		1182/24	200 (200-½)	
		1540/60	558 (600-1¼)	
	1520/24	538 (600-½)	1520/55	538 (600-1)
CIRCLING	1660-1 675 (700-1)	1680-1 695 (700-1)	2000-3 1015 (1100-3)	2040-3 1055 (1100-3)

NC-2, 25 FEB 2021 to 25 MAR 2021

NC-2, 25 FEB 2021 to 25 MAR 2021