

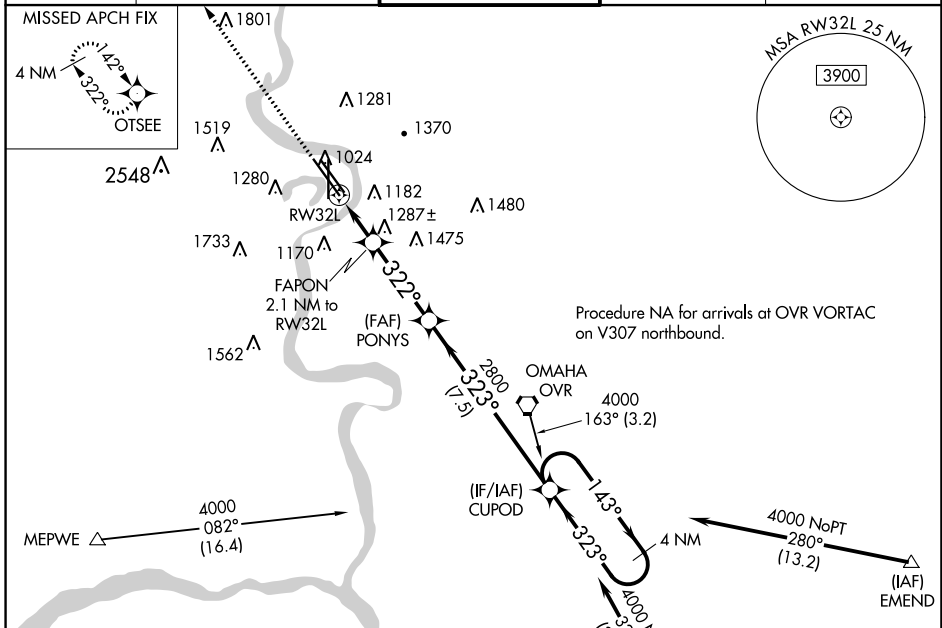
WAAS CH <b>60917</b> <b>W32A</b>	APP CRS <b>322°</b>	Rwy Idg <b>9502</b> TDZE <b>981</b> Apt Elev <b>985</b>
--	------------------------	---

# RNAV (GPS) Y RWY 32L

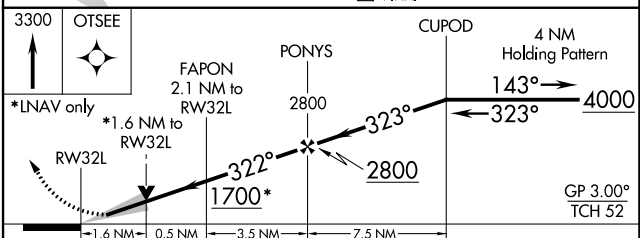
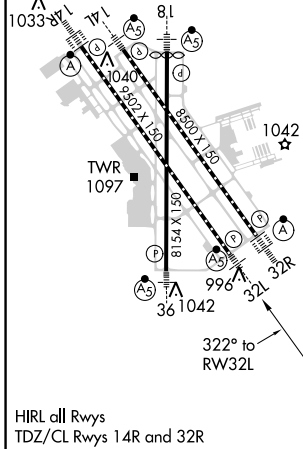
EPPLEY AIRFIELD (OMA)

RNP APCH.	MALSR	MISSED APPROACH: Climb to 3300 direct OTSEE and hold, continue climb-in-hold to 3300.
For uncompensated Baro-VNAV systems, LNAV/VNAV NA below -19°C (-2°F) or above 54°C (130°F). # RVR 1800 authorized with use of FD or AP or HUD to DA.		

D-ATIS <b>120.4</b>	OMAHA APP CON <b>120.1 354.05</b>	OMAHA TOWER <b>132.1 256.9</b>	GND CON <b>121.9</b>	CLNC DEL <b>119.9</b>
------------------------	--------------------------------------	-----------------------------------	-------------------------	--------------------------



ELEV 985	<b>D</b>	TDZE 981
----------	----------	----------



CATEGORY	A	B	C	D
LPV DA#		1181/24	200 (200-½)	
LNAV/VNAV DA		1572-1¼	591 (600-1¼)	
LNAV MDA	1540/24	559 (600-½)	1540/60	559 (600-1¼)
<b>C</b> CIRCLING	1660-1 675 (700-1)	1680-1 695 (700-1)	2000-3 1015 (1100-3)	2040-3 1055 (1100-3)

NC-2, 25 FEB 2021 to 25 MAR 2021

NC-2, 25 FEB 2021 to 25 MAR 2021