

WAAS CH <b>77634</b> <b>W27A</b>	APP CRS <b>265°</b>	Rwy Idg TDZE Apt Elev	<b>4005</b> <b>28</b> <b>28</b>
--	------------------------	-----------------------------	---------------------------------------

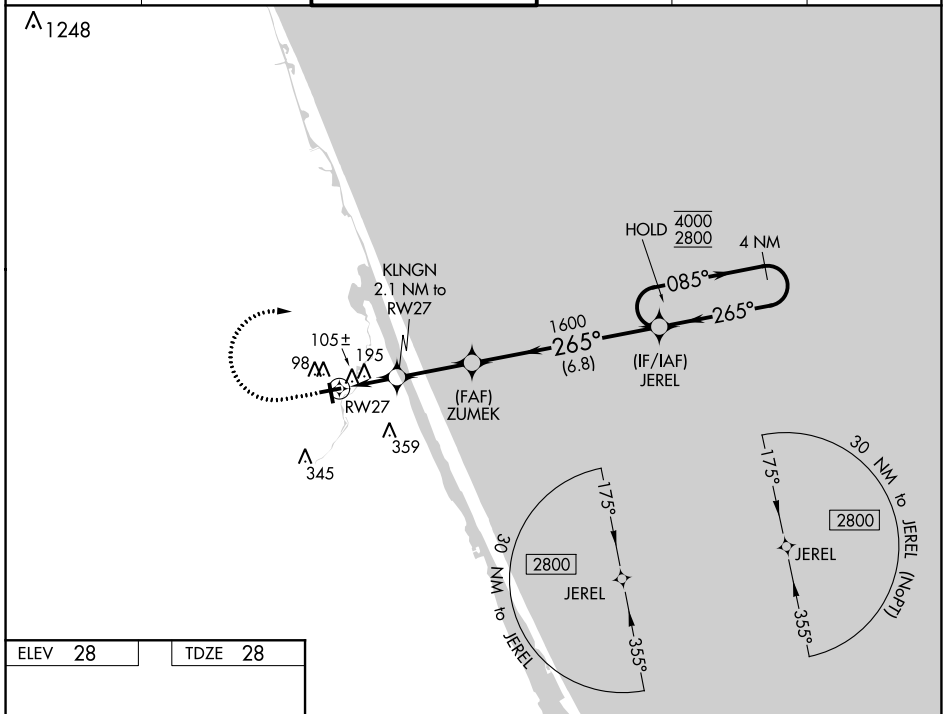
# RNAV (GPS) RWY 27

ORMOND BEACH MUNI (OMN)

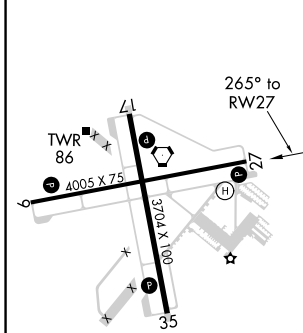
RNP APCH.  
 Rwy 27 helicopter visibility reduction below 3/4 SM NA.

MISSED APPROACH: Climb to 600 then climbing right turn to 2800 direct JEREL and hold.

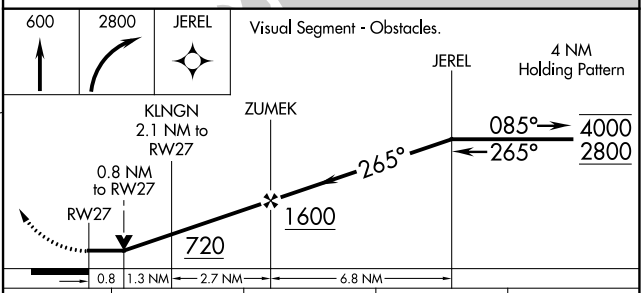
ATIS <b>118.475</b>	DAYTONA APP CON <b>125.8 269.075</b>	ORMOND BEACH TOWER* <b>119.075 (CTAF)</b>	GND CON <b>121.625</b>	CLNC DEL <b>121.625</b>	UNICOM <b>123.05</b>
------------------------	---	--	---------------------------	----------------------------	-------------------------



ELEV 28	TDZE 28
---------	---------



REIL Rwy 9, 17, 27, and 35   
 MIRL Rwy 9-27 and 17-35



CATEGORY	A	B	C	D
LP MDA	360-1 332 (400-1)			NA
LNAV MDA	460-1	432 (500-1)	460-1 1/4 432 (500-1 1/4)	NA
CIRCLING	500-1	472 (500-1)	740-2 712 (800-2)	NA

SE-3, 25 FEB 2021 to 25 MAR 2021

SE-3, 25 FEB 2021 to 25 MAR 2021