


LOC/DME I-ONA <b>109.35</b> Chan 30(Y)	APP CRS <b>300°</b>	Rwy Idg TDZE <b>656</b> Apt Elev <b>656</b>
--	------------------------	---

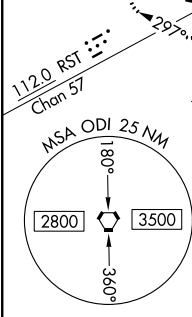
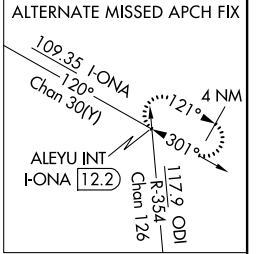
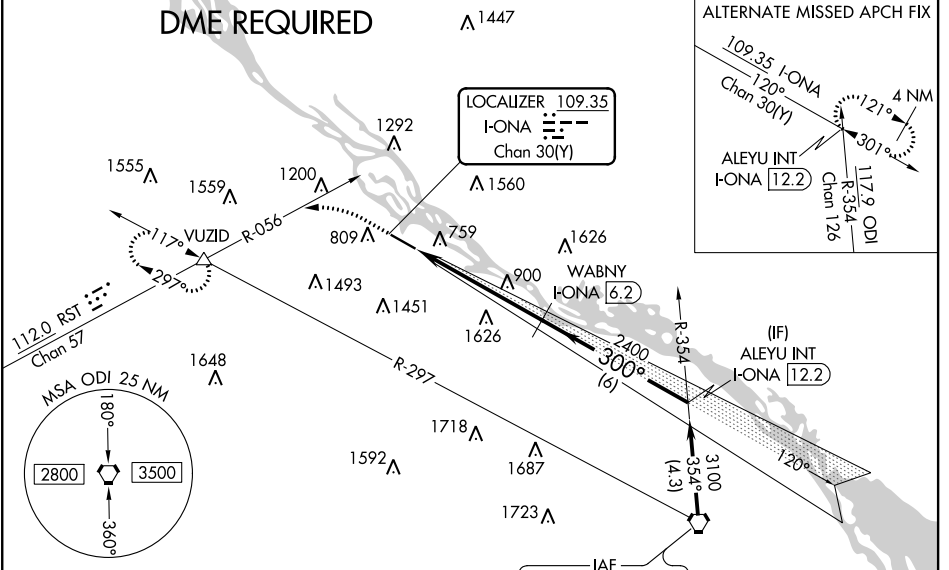
# ILS Y or LOC Y RWY 30

WINONA MUNI-MAX CONRAD FIELD (ONA)

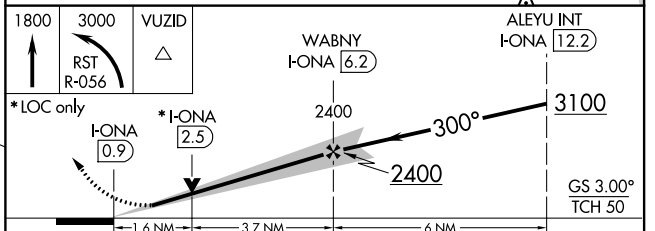
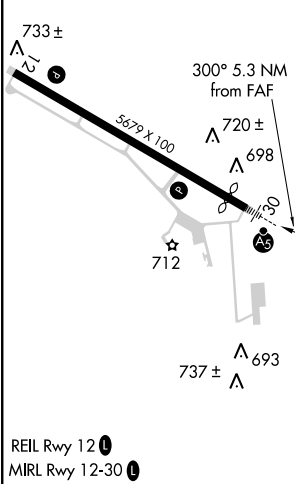
**⚠ DME required.** VDP NA with La Crosse altimeter setting. When local altimeter setting not received, use La Crosse altimeter setting and increase S-ILS 30 DA to 1127 and all visibilities 1/8 mile, increase all MDA 60 feet, and visibility S-LOC 30 Cat C/D 1/8 mile, and Circling Cat B 1/4 mile. For inop ALS, increase S-ILS 30 all Cats visibility to 1 1/8 mile, increase S-LOC 30 Cats C/D visibility to 1 1/8 mile. For inop ALS when using La Crosse altimeter setting, increase S-ILS 30 all Cats visibility to 1 1/8 mile, increase S-LOC 30 Cats C/D visibility to 1 1/4 mile.

**MALSRS**  
  
**MISSED APPROACH:** Climb to 1800 then climbing left turn to 3000 on RST VOR/DME R-056 to VUZID INT and hold.

AWOS-3 <b>118,075</b>	MINNEAPOLIS CENTER <b>128,6 363,0</b>	UNICOM <b>122.8 (CTAF) 0</b>
--------------------------	--	---------------------------------



ELEV 656	<b>D</b>	TDZE 656
----------	----------	----------



CATEGORY	A	B	C	D
S-ILS 30	1074-1 1/8 418 (500-1 1/8)			
S-LOC 30	1220-1/2 564 (600-1/2)	1220-1/4 564 (600-1/4)		
<b>C</b> CIRCLING	1560-1/4 904 (1000-1/4)	1600-1/4 944 (1000-1/4)	1780-3 1124 (1200-3)	1980-3 1324 (1400-3)

NC-1, 25 FEB 2021 to 25 MAR 2021

NC-1, 25 FEB 2021 to 25 MAR 2021