

KARLB TWO ARRIVAL(RNAV)

AL-965 (FAA)

ONTARIO INTL (ONT)
ONTARIO, CALIFORNIA

SW-3, 25 FEB 2021 to 25 MAR 2021

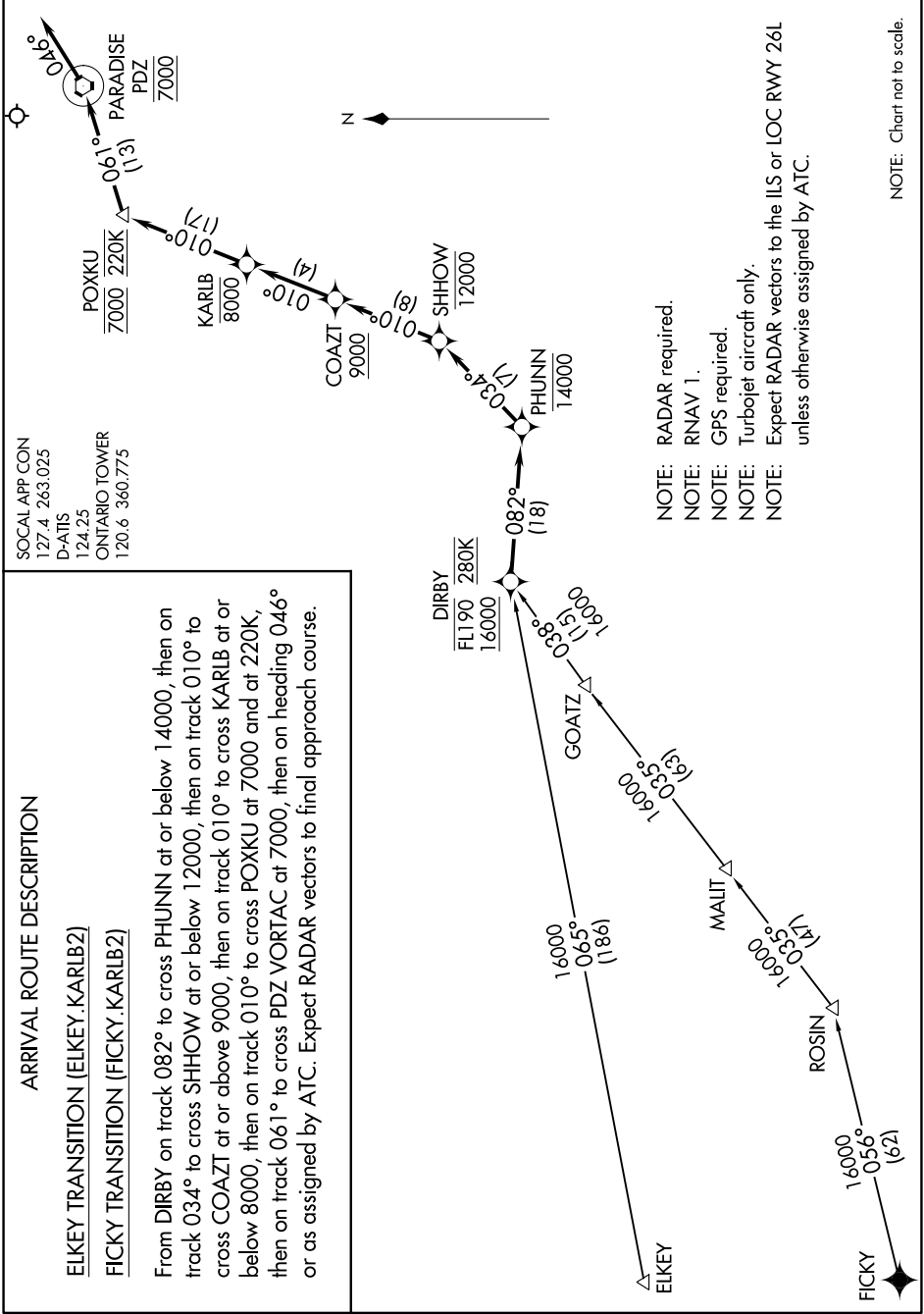
ARRIVAL ROUTE DESCRIPTION

ELKEY TRANSITION (ELKEY.KARLB2)

FICKY TRANSITION (FICKY.KARLB2)

From DIRBY on track 082° to cross PHUNIN at or below 14000, then on track 034° to cross SHHOW at or below 12000, then on track 010° to cross COAZT at or above 9000, then on track 010° to cross POXKU at or below 8000, then on track 010° to cross PDZ VORTAC at 7000, then on heading 046° or as assigned by ATC. Expect RADAR vectors to final approach course.

SOCAL APP CON
127.4 263.025
D-ATIS
124.25
ONTARIO TOWER
120.6 360.775



- NOTE: RADAR required.
- NOTE: RNAV 1.
- NOTE: GPS required.
- NOTE: Turbojet aircraft only.
- NOTE: Expect RADAR vectors to the ILS or LOC RWY 26L unless otherwise assigned by ATC.

NOTE: Chart not to scale.

SW-3, 25 FEB 2021 to 25 MAR 2021