

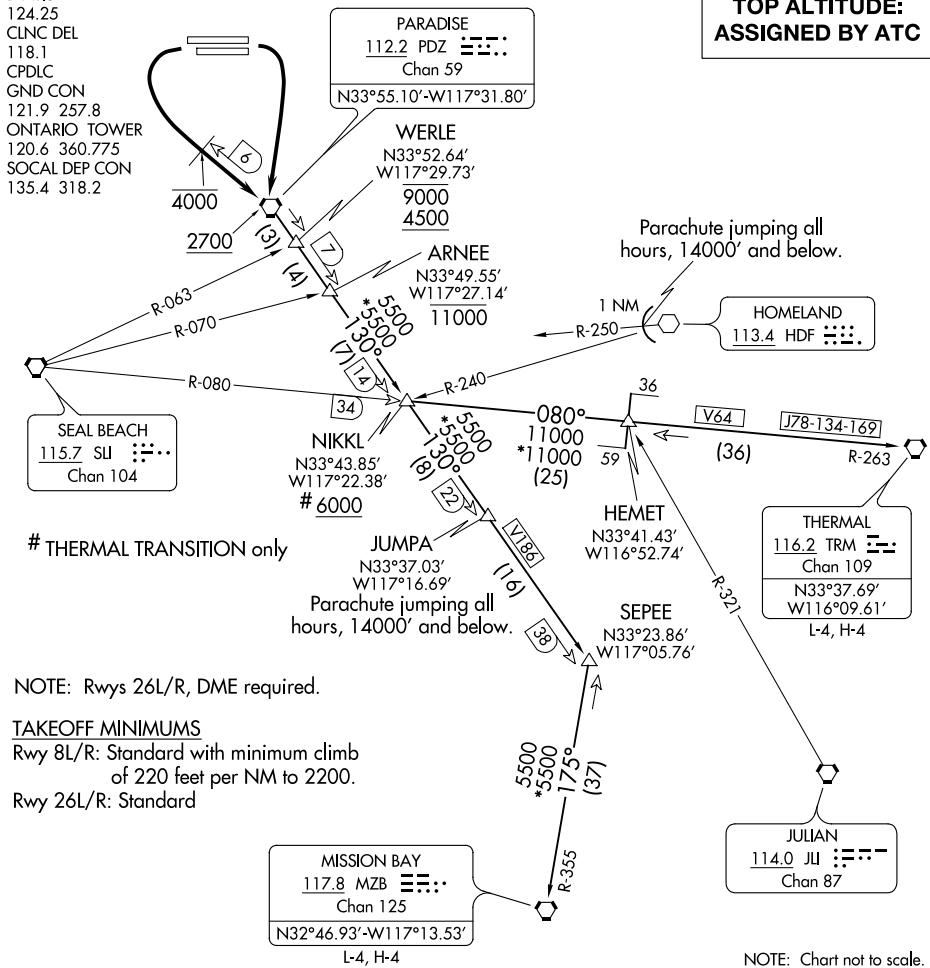
NIKKL ONE DEPARTURE

AL-965 (FAA)

ONTARIO INTL (ONT)
ONTARIO, CALIFORNIA

D-ATIS
124.25
CLNC DEL
118.1
CPDLC
GND CON
121.9 257.8
ONTARIO TOWER
120.6 360.775
SOCAL DEP CON
135.4 318.2

**TOP ALTITUDE:
ASSIGNED BY ATC**



SW-3, 25 FEB 2021 to 25 MAR 2021

SW-3, 25 FEB 2021 to 25 MAR 2021

NOTE: Rwy 26L/R, DME required.

TAKEOFF MINIMUMS

Rwy 8L/R: Standard with minimum climb of 220 feet per NM to 2200.
Rwy 26L/R: Standard

NOTE: Chart not to scale.

DEPARTURE ROUTE DESCRIPTION

TAKEOFF RUNWAYS 8L/R: Climbing right turn direct PDZ VORTAC. Thence. . . .

TAKEOFF RUNWAYS 26L/R: Climbing left turn direct PDZ VORTAC, cross 6 DME northwest of PDZ VORTAC at or below 4000'. Thence. . . .

. . . .on (assigned transition) or (assigned route). Cross PDZ VORTAC at or above 2700. Expect filed altitude 10 minutes after departure.

MISSION BAY TRANSITION (NIKKL1.MZB): From over PDZ VORTAC on PDZ R-130 and MZB R-355 to MZB VORTAC.

THERMAL TRANSITION (NIKKL1.TRM): From over PDZ VORTAC on PDZ R-130, SLI R-080 and TRM R-263 to TRM VORTAC.

NIKKL ONE DEPARTURE