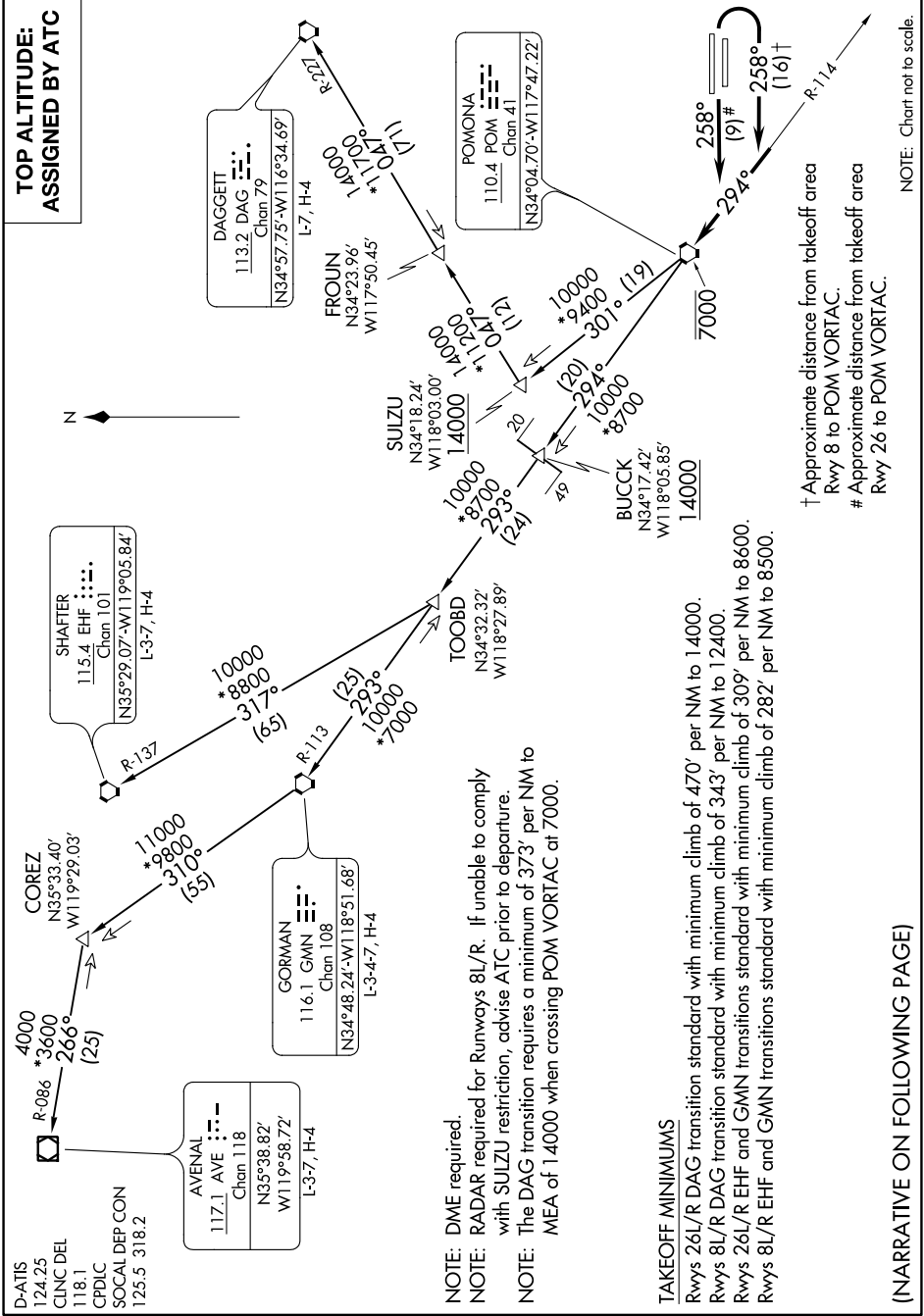


POMONA ONE DEPARTURE

AL-965 (FAA)

ONTARIO INTL (ONT)
ONTARIO, CALIFORNIA

SW-3, 25 FEB 2021 to 25 MAR 2021



D-ATIS
124.25
CLNC DEL
118.1
CPDLC
SOCAL DEP CON
125.5 318.2

AVENAL
117.1 AVE
Chan 118
N35°38.82'
W119°58.72'
L-3-7, H-4

GORMAN
116.1 GMN
Chan 108
N34°48.24'-W118°51.68'
L-3-4-7, H-4

SHAFTER
115.4 EHF
Chan 101
N35°29.07'-W119°05.84'
L-3-7, H-4

DAGGETT
113.2 DAG
Chan 79
N34°57.75'-W116°34.69'
L-7, H-4

NOTE: DME required.
NOTE: RADAR required for Runways 8L/R. If unable to comply with SULZU restriction, advise ATC prior to departure.
NOTE: The DAG transition requires a minimum of 373' per NM to 7000. MEA of 14000 when crossing POM VORTAC at 7000.

TAKEOFF MINIMUMS

Rwys 26L/R DAG transition standard with minimum climb of 470' per NM to 14000.
Rwys 8L/R DAG transition standard with minimum climb of 343' per NM to 12400.
Rwys 26L/R EHF and GMN transitions standard with minimum climb of 309' per NM to 8600.
Rwys 8L/R EHF and GMN transitions standard with minimum climb of 282' per NM to 8500.

† Approximate distance from takeoff area
Rwy 8 to POM VORTAC.
Approximate distance from takeoff area
Rwy 26 to POM VORTAC.

(NARRATIVE ON FOLLOWING PAGE)

NOTE: Chart not to scale.

POMONA ONE DEPARTURE

SW-3, 25 FEB 2021 to 25 MAR 2021