

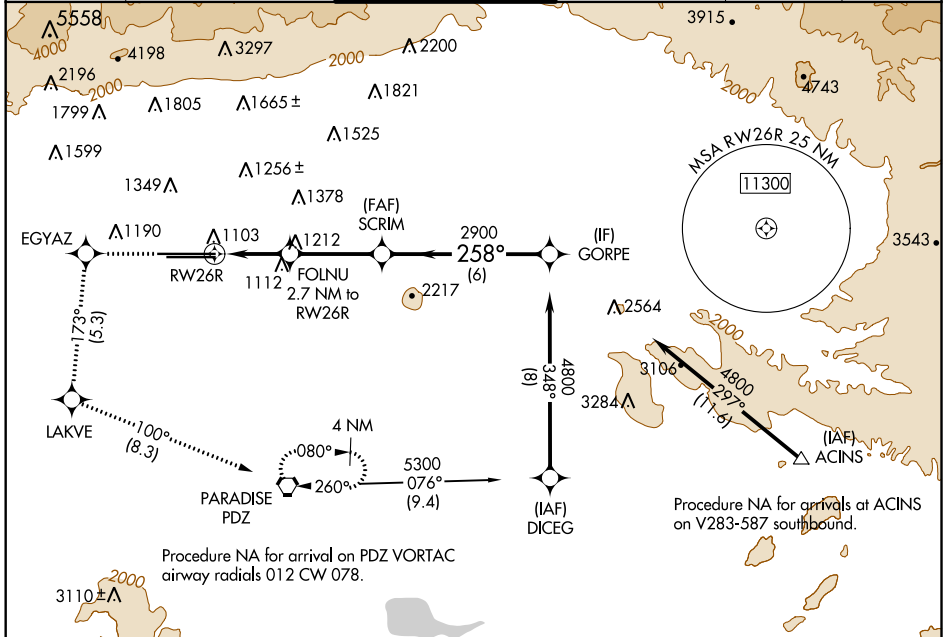
WAAS CH 53406 W26A	APP CRS 258°	Rwy Idg 12197 TDZE 932 Apt Elev 944
--	------------------------	--

RNAV (GPS) Y RWY 26R

ONTARIO INTL (ONT)

<p>▼ For uncompensated Baro-VNAV systems, procedure NA below 2°C (36°F) or above 54°C (130°F). Circling NA north of Rwy 8L-26R. DME/DME RNP-0.3 NA.</p>	<p>MALS/R</p>	<p>MISSED APPROACH: Climb to 3700 direct EGYAZ and on track 173° to LAKVE and on track 100° to PDZ VORTAC and hold.</p>
--	---------------	---

D-ATIS 124.25	SOCAL APP CON 127.0 318.2	ONTARIO TOWER 120.6 360.775	GND CON 121.9 257.8	CLNC DEL 118.1	CPDLC
-------------------------	-------------------------------------	---------------------------------------	-------------------------------	--------------------------	-------

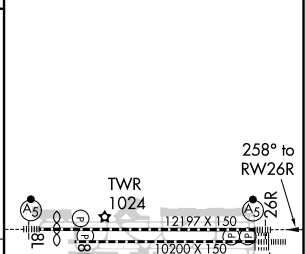
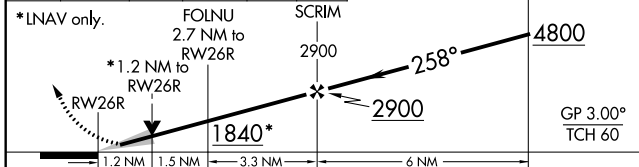


SW-3, 25 FEB 2021 to 25 MAR 2021

SW-3, 25 FEB 2021 to 25 MAR 2021

ELEV 944	D	TDZE 932
-----------------	----------	-----------------

3700	EGYAZ	LAKVE	PDZ	VGSI and RNAV glidepath not coincident (VGSI Angle 3.00/TCH 75).
↑	tr 173°	tr 100°		



CATEGORY	A	B	C	D
LPV DA		1132/24	200 (200-½)	
LNAV/VNAV DA		1264/30	332 (400-⅝)	
LNAV MDA	1380/24	448 (500-½)	1380/45	448 (500-⅔)
C CIRCLING	1400-1	456 (500-1)	1500-1½ 556 (600-1½)	1540-2 596 (600-2)

TDZ/CL Rwys 8L and 26L
HIRL Rws 8L-26R and 8R-26L