

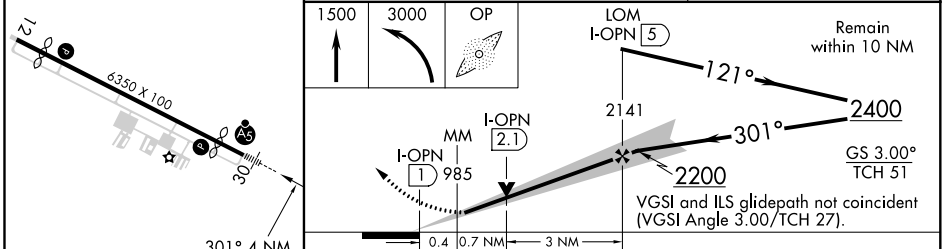
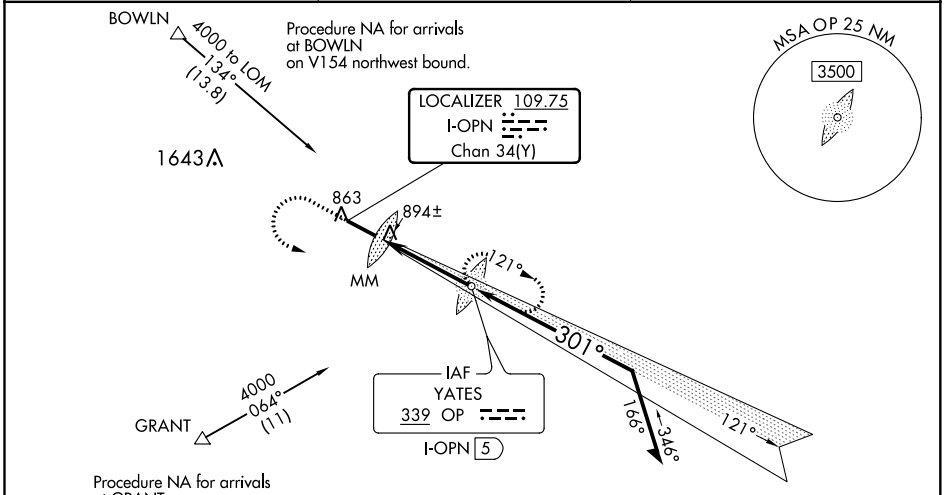
LOC/DME I-OPN 109.75 Chan 34 (Y)	APP CRS 301°	Rwy Idg 5651 TDZE 796 Apt Elev 798
--	------------------------	---

ILS or LOC RWY 30

THOMASTON-UPSON COUNTY (OPN)

ADF required. When local altimeter setting not received, use Atlanta Rgnl Falcon Field altimeter setting: increase DA to 1064 feet; increase all MDAs 80 feet and S-LOC 30 visibility Cats C and D 1/4 SM. For inop ALS, increase S-LOC 30 Cat C/D visibility to 1 SM. For inop ALS when using Atlanta Rgnl Falcon Field altimeter setting, increase S-ILS 30 all Cats visibility to 7/8 SM. VDP NA when using Atlanta Rgnl Falcon Field altimeter setting.	MALSR 	MISSED APPROACH: Climb to 1500 then climbing left turn to 3000 direct YATES LOM and hold, continue climb-in-hold to 3000.
--	-----------	---

AWOS-3 133.975	ATLANTA APP CON ★ 124.2 279.6	UNICOM 122.8 (CTAF)
--------------------------	---	-------------------------------



CATEGORY	A	B	C	D
S-ILS 30		996-1/2	200 (200-1/2)	
S-LOC 30	1160-1/2	364 (400-1/2)	1160-3/8 364 (400-3/8)	1160-3/4 364 (400-3/4)
CIRCLING	1300-1	502 (600-1)	1300-1 1/2 502 (600-1 1/2)	1360-2 562 (600-2)

SE-4, 25 FEB 2021 to 25 MAR 2021

SE-4, 25 FEB 2021 to 25 MAR 2021