

BRADFORD SEVEN ARRIVAL

AL-166 (FAA)

CHICAGO O'HARE INTL (ORD)
CHICAGO, ILLINOIS

EC-3, 25 FEB 2021 to 25 MAR 2021

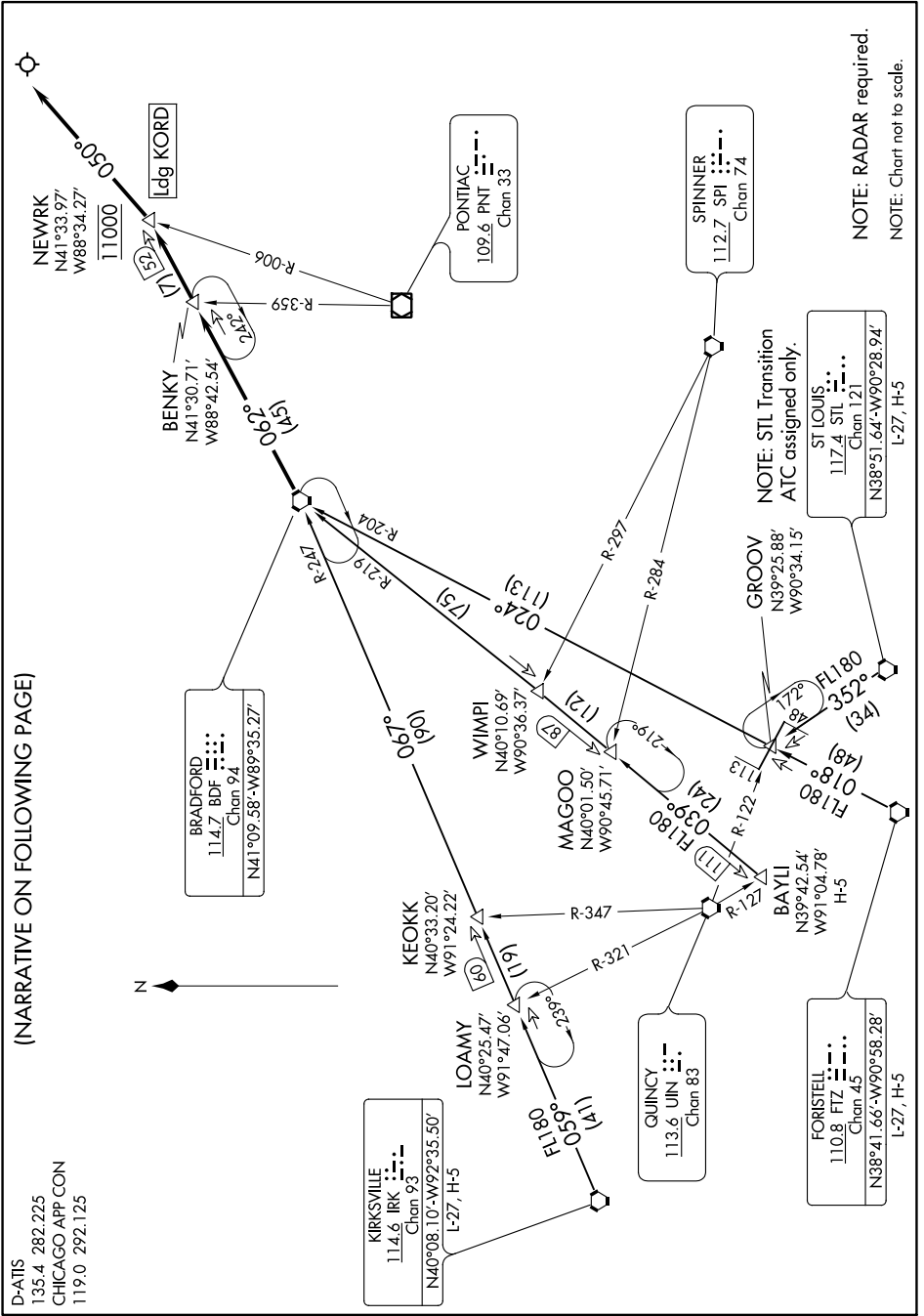
(NARRATIVE ON FOLLOWING PAGE)

D-ATIS
135.4 282.225
CHICAGO APP CON
119.0 292.125

BRADFORD SEVEN ARRIVAL

(BDF.BDF7) 19JUL18

CHICAGO, ILLINOIS
CHICAGO O'HARE INTL (ORD)



NOTE: RADAR required.
NOTE: Chart not to scale.

NOTE: STL Transition
ATC assigned only.
ST LOUIS
117.4 STL
Chan 121
N38°51.64'-W90°28.94'
L-27, H-5

BRADFORD
114.7 BDF
Chan 94
N41°09.58'-W89°35.27'

KIRKSVILLE
114.6 IRK
Chan 93
N40°08.10'-W92°35.50'
L-27, H-5

QUINCY
113.6 UIN
Chan 83

FORSTELL
110.8 FTZ
Chan 45
N38°41.66'-W90°58.28'
L-27, H-5

EC-3, 25 FEB 2021 to 25 MAR 2021