

LOC/DME I-SXH 108.95 Chan 26(Y)	APP CRS 093°	Rwy Idg TDZE Apt Elev	10540 669 680
--	------------------------	-----------------------------	--

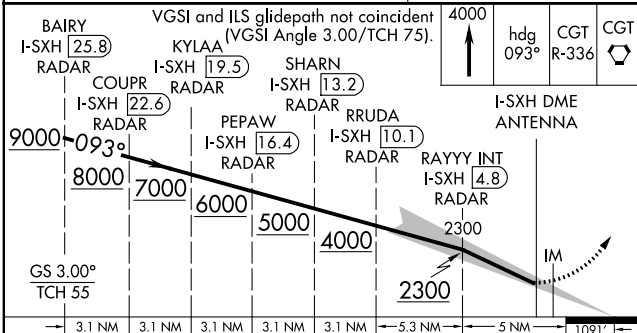
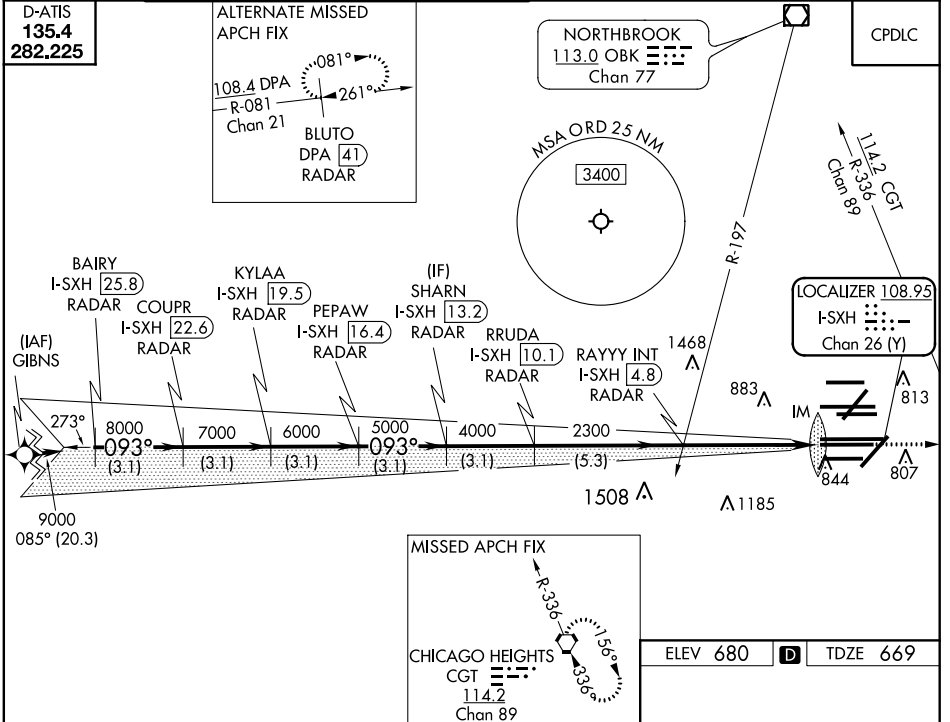
ILS RWY 10C (SA CAT I)

CHICAGO O'HARE INTL (ORD)

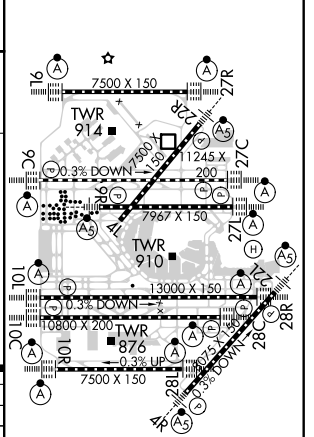
From GIBNS: RNAV-1 GPS required.
 RNAV 1-GPS or RADAR required for procedure entry. DME or RADAR required.
 Simultaneous approach authorized. Requires specific OPSPEC, MSPEC, or LOA approval and use of HUD to DH.

ALSF-2
 MISSED APPROACH: Climb to 4000 on heading 093° and CGT VORTAC R-336 to CGT VORTAC and hold.

CHICAGO APP CON 119.0 292.125	O'HARE TOWERS 128.15 348.0 (Rwy 9L/27R) 133.0 348.0 (10R/28L) 126.9 132.7 348.0 (CENTER)	GND CON (TWR NORTH) 124.125 (TWR SOUTH) 118.05 (ALL TWRHS) 226.675	(TWR CENTER) 121.75 (OBND) (IBND) 121.9	CLNC DEL 121.6
---	--	--	--	--------------------------



ELEV 680	D	TDZE 669
----------	---	----------



CATEGORY	A	B	C	D
5-ILS 10C	RA 148/14 150 DA 819			

SA CATEGORY I ILS - SPECIAL AIRCREW & AIRCRAFT CERTIFICATION REQUIRED

EC-3, 25 FEB 2021 to 25 MAR 2021

EC-3, 25 FEB 2021 to 25 MAR 2021