

ILS RWY 22L (SA CAT I & II)

CHICAGO O'HARE INTL (ORD)

LOC I-LQQ	APP CRS	Rwy ldg TDZE	8075 654
110.1	225°	Apt Elev	680

RADAR required for procedure entry.

- Simultaneous approach authorized.
- SA CAT I: Requires specific OPSPEC, MSPEC, or LOA approval and use of HUD to DH.
- SA CAT II: Reduced lighting: Requires specific OPSPEC, MSPEC, or LOA approval and use of autoland or HUD to touchdown.



MISSED APPROACH:
Climb to 1100 then climbing left turn to 4000 direct CGT VORTAC.

CHICAGO APP CON	O'HARE TOWERS	GND CON	(TWR CENTER)	CLNC DEL
119.0 292.125	128.15 348.0 (Rwy 9L/27R) 133.0 348.0 (10R/28L)	124.125 (TWR NORTH) 118.05 (TWR SOUTH) 226.675 (ALL TWRs)	121.75 (OBND) 121.9 (IBND)	121.6

D-ATIS
135.4
282.225

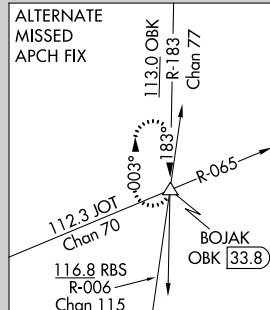
CPDLC

NORTHBROOK
113.0 OBK
Chan 77

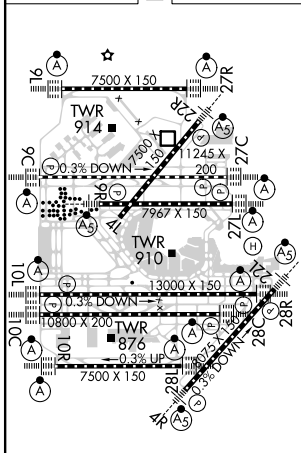
CHICAGO
Chan 19(Y)
GCO (108.25)

LOCALIZER 110.1
I-LQQ

MISSED APCH FIX
CHICAGO HEIGHTS
CGT
114.2
Chan 89



ELEV 680 TDZE 654



1100	4000	CGT	VGSI and ILS glidepath not coincident (VGSI Angle 3.00/TCH 73).	
			KENIL INT GCO 111.3 LAIKE INT 2500 225° 4000 2500 GS 3.00° TCH 55	
CATEGORY	A	B	C	D
S-ILS 22L	SA CAT I	RA 164/16	150 DA 804	
S-ILS 22L	SA CAT II	RA 112/12	100 DA 754	

SA CATEGORY I & II ILS - SPECIAL AIRCREW & AIRCRAFT CERTIFICATION REQUIRED

EC-3, 25 FEB 2021 to 25 MAR 2021

EC-3, 25 FEB 2021 to 25 MAR 2021