

LOC/DME I-IAC <b>110.5</b> Chan <b>42</b>	APP CRS <b>273°</b>	Rwy ldg <b>7782</b> TDZE <b>654</b> Apt Elev <b>680</b>
---	------------------------	--

# ILS RWY 27L (CAT II & III)

CHICAGO O'HARE INTL (ORD)

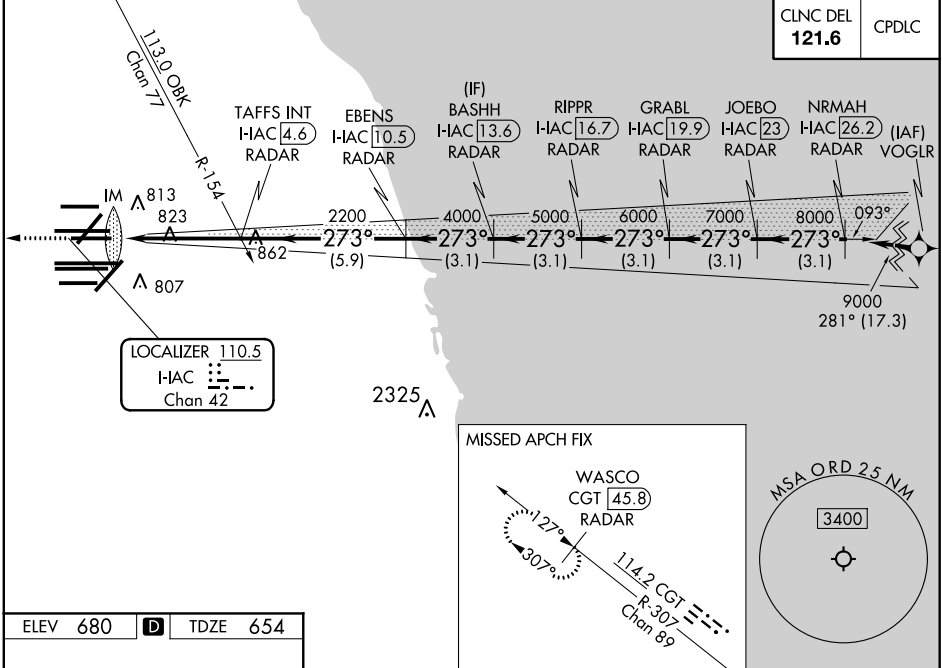
From VOGLR: RNAV 1-GPS required. Aircraft not GPS equipped - RADAR required for procedure entry. DME or RADAR required.

Simultaneous approach authorized.

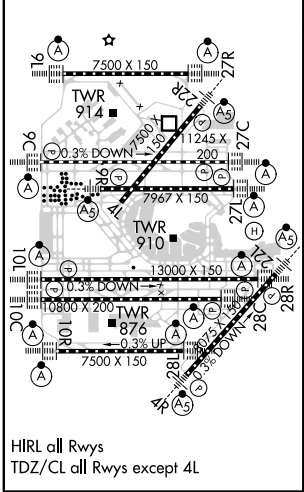
ALSF-2

MISSED APPROACH: Climb to 1200 then climb to 4000 on heading 265° and on CGT VORTAC R-307 to WASCO/CGT 45.8 DME/RADAR and hold.

D-ATIS <b>135.4</b>	CHICAGO APP CON <b>119.0 292.125</b>	O'HARE TOWERS <b>128.15 348.0</b> (Rwy 9L/27R) <b>133.0 348.0</b> (10R/28L)	GND CON (TWR NORTH) <b>124.125</b>	GND CON (TWR CENTER) <b>121.75</b> (OBND)
<b>282.225</b>		<b>120.75 121.15 126.9 132.7 348.0</b> (CENTER)	<b>118.05</b> (TWR SOUTH)	<b>121.9</b> (IBND)
			<b>226.675</b> (ALL TWSR)	



ELEV <b>680</b>	<b>D</b>	TDZE <b>654</b>
-----------------	----------	-----------------



1200	4000	CGT R-307	WASCO CGT 45.8 RADAR	VGSI and ILS glidepath not coincident (VGSI Angle 3.00/TCH 67).	NRMAH HAC 26.2 RADAR				
hdg 265°									
		TAFSS INT I-HAC 4.6 RADAR	EBENS I-HAC 10.5 RADAR	RIPPR I-HAC 16.7 RADAR	GRABL I-HAC 19.9 RADAR				
		I-HAC DME ANTENNA							
		IM 750							
		2200	4000	5000	6000				
					7000				
					8000				
					9000				
		1040'	4.7 NM	5.9 NM	3.1 NM	3.1 NM	3.1 NM	3.1 NM	3.1 NM
CATEGORY	A		B		C		D		
S-ILS 27L	CAT II RA 110/12		100 DA 754						
S-ILS 27L	CAT III RVR 06								

**CATEGORY II & III ILS - SPECIAL AIRCREW & AIRCRAFT CERTIFICATION REQUIRED**

EC-3, 25 FEB 2021 to 25 MAR 2021

EC-3, 25 FEB 2021 to 25 MAR 2021