

LOC/DME I-IAC <b>110.5</b> Chan <b>42</b>	APP CRS <b>273°</b>	Rwy ldg <b>7782</b> TDZE <b>654</b> Apt Elev <b>680</b>
---	------------------------	--

# ILS RWY 27L (SA CAT I)

## CHICAGO O'HARE INTL (ORD)

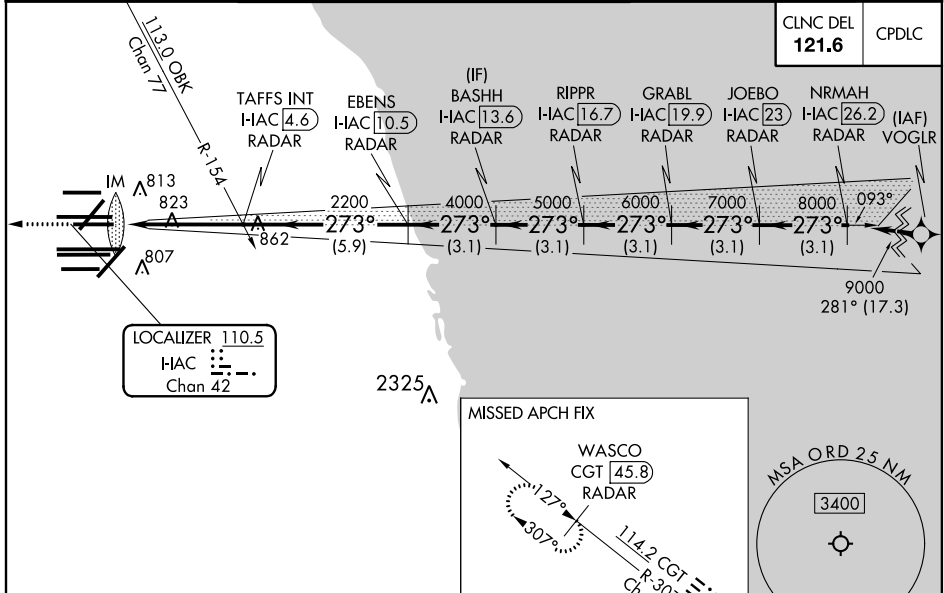
From VOGLR: RNAV 1-GPS required. Aircraft not GPS equipped - RADAR required for procedure entry. DME or RADAR required.

Simultaneous approach authorized. Requires specific OPSPEC, MSPEC, or LOA approval and use of HUD to DH. For inop ALS, increase S-LOC 27L Cat C/D visibility to 1 $\frac{1}{2}$  SM.

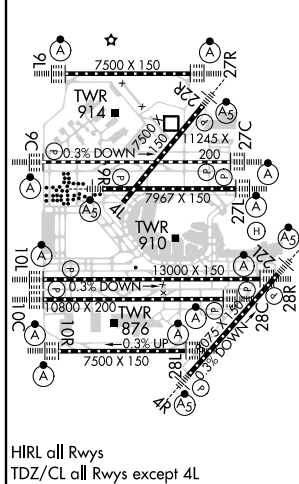
ALSF-2  
A

MISSED APPROACH: Climb to 1200 then climb to 4000 on heading 265° and on CGT VORTAC R-307 to WASCO/CGT 45.8 DME/RADAR and hold.

D-ATIS <b>135.4</b> <b>282.225</b>	CHICAGO APP CON <b>119.0</b> <b>292.125</b>	O'HARE TOWERS <b>128.15 348.0</b> (Rwy 9L/27R) <b>133.0 348.0</b> (10R/28L) <b>120.75 121.15 126.9 132.7 348.0</b> (CENTER)				GND CON (TWR CENTER) <b>124.125</b> (TWR NORTH) <b>118.05</b> (TWR SOUTH) <b>226.675</b> (ALL TWRs)	(TWR CENTER) (ORBND) <b>121.75</b> <b>121.9</b> (IBND)
--	---	---	--	--	--	--	--



ELEV <b>680</b>	<b>D</b>	TDZE <b>654</b>
-----------------	----------	-----------------



1200	4000	CGT R-307	WASCO CGT <b>45.8</b> RADAR	VGSi and ILS glidepath not coincident (VGSi Angle 3.00/TCH 67).			
hdg 265°				BASHH I-IAC <b>13.6</b> RADAR	GRABL I-IAC <b>19.9</b> RADAR	NRMAH I-IAC <b>26.2</b> RADAR	
		TAFS INT I-IAC <b>4.6</b> RADAR	EBENS I-IAC <b>10.5</b> RADAR	RIPPR I-IAC <b>16.7</b> RADAR	JOEBO I-IAC <b>23</b> RADAR		
		HAC DME ANTENNA					
		2200	4000	5000	6000	7000	8000
		2200					9000
		1040'	4.7 NM	5.9 NM	3.1 NM	3.1 NM	3.1 NM
CATEGORY	A	B	C	D			
S-ILS 27L	RA 164/14 150 DA 804						
<b>SA CATEGORY I ILS - SPECIAL AIRCREW &amp; AIRCRAFT CERTIFICATION REQUIRED</b>							

EC-3, 25 FEB 2021 to 25 MAR 2021

EC-3, 25 FEB 2021 to 25 MAR 2021