

LOC/DME I-VZE <b>108.95</b> Chan 26 (Y)	APP CRS <b>273°</b>	Rwy ldg <b>10800</b> TDZE <b>651</b> Apt Elev <b>680</b>
---	------------------------	--

# ILS RWY 28C (CAT II & III)

CHICAGO O'HARE INTL (ORD)

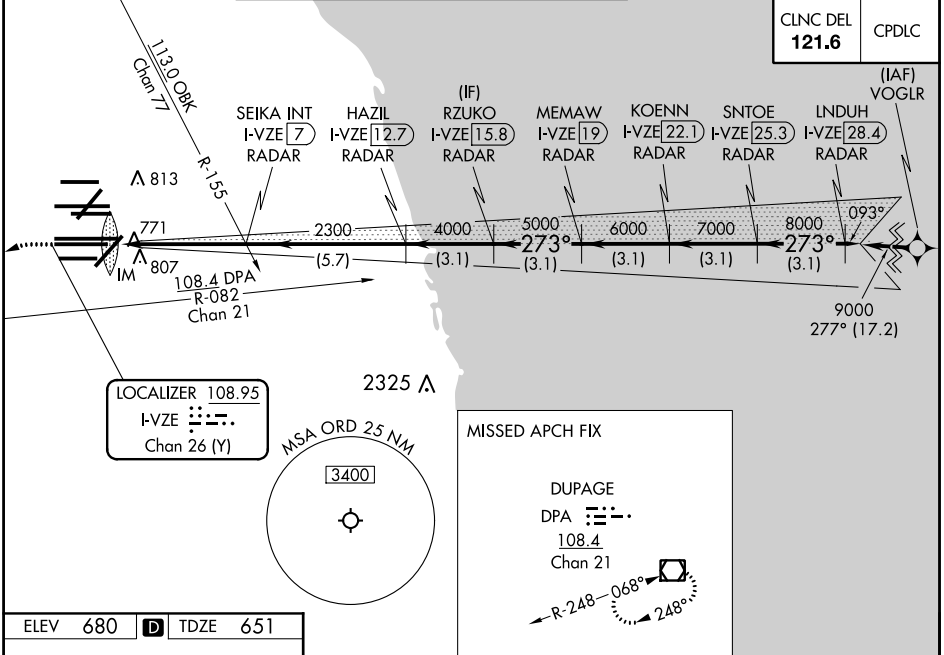
From VOGLR: RNAV 1-GPS required.  
Aircraft not GPS equipped - RADAR required for procedure entry.  
DME or RADAR required.

Simultaneous approach authorized. CAT II: RVR 1000 authorized with specific OPSPEC, MSPEC, or LOA approval and use of outland or HUD to touchdown.



MISSED APPROACH: Climb to 1100 then climbing left turn to 4000 on heading 215° and DPA VOR/DME R-082 to DPA VOR/DME and hold.

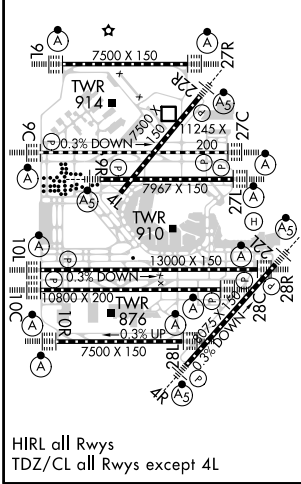
D-ATIS <b>135.4</b>	CHICAGO APP CON <b>119.0 292.125</b>	O'HARE TOWERS <b>128.15 348.0</b> (Rwy 9L/27R) <b>133.0 348.0</b> (10R/28L) <b>120.75 121.15 126.9 132.7 348.0</b> (CENTER)	GND CON (TWR NORTH) <b>124.125</b> (TWR SOUTH) <b>118.05</b> (ALL TWRs) <b>226.675</b>	(TWR CENTER) <b>121.75</b> (RBNB) <b>121.9</b>
------------------------	---	--	---	---



EC-3, 25 FEB 2021 to 25 MAR 2021

EC-3, 25 FEB 2021 to 25 MAR 2021

ELEV <b>680</b>	<b>D</b>	TDZE <b>651</b>
-----------------	----------	-----------------



1100	4000	DPA R-082	DPA	VGSI and ILS glidepath not coincident (VGSI Angle 3.00°/TCH 80).	LINDUH I-VZE [28.4] RADAR
hdg 215°					RZUKO I-VZE [15.8] RADAR
					KOENN I-VZE [22.1] RADAR
					SNTOE I-VZE [25.3] RADAR
					MEMAW I-VZE [19] RADAR
					HAZIL I-VZE [12.7] RADAR
					SEIKA INT I-VZE [7] RADAR
					IM 2300
					750
					2300
					4000
					5000
					6000
					7000
					8000
					9000
					GS 3.00°
					TCH 55
					5 NM
					5.7 NM
					3.1 NM
					3.1 NM
					3.1 NM
					3.1 NM
					3.1 NM
CATEGORY	A	B	C	D	
S-ILS 28C	CAT II RA 105/12 100 DA 751				
S-ILS 28C	CAT III RVR 06				

**CATEGORY II & III ILS - SPECIAL AIRCREW & AIRCRAFT CERTIFICATION REQUIRED**