

LOC/DME I-VZE 108.95 Chan 26 (Y)	APP CRS 273°	Rwy ldg 10800 TDZE 651 Apt Elev 680
---	------------------------	--

ILS RWY 28C (SA CAT I)

CHICAGO O'HARE INTL (ORD)

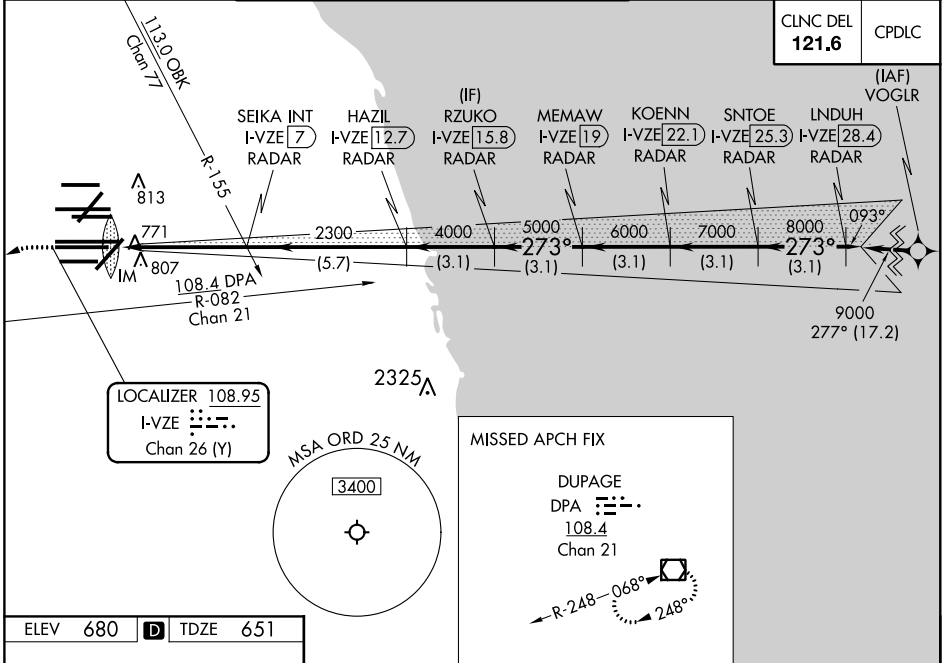
From VOGLR: RNAV 1-GPS required.
Aircraft not GPS equipped - RADAR required for procedure entry.
DME or RADAR required.

Simultaneous approach authorized. Requires specific OPSPEC, MSPEC, or LOA approval and use of HUD to DH.

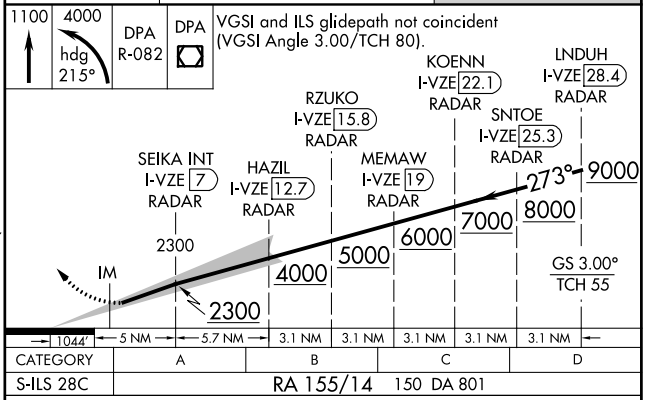
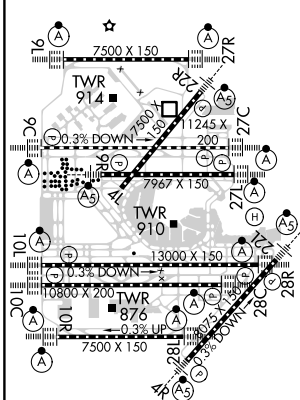


MISSED APPROACH: Climb to 1100 then climbing left turn to 4000 on heading 215° and DPA VOR/DME R-082 to DPA VOR/DME and hold.

D-ATIS 135.4	CHICAGO APP CON 119.0 292.125	O'HARE TOWERS 128.15 348.0 (Rwy 9L/27R) 133.0 348.0 (10R/28L) 120.75 121.15 126.9 132.7 348.0 (CENTER)	GND CON (TWR CENTER) 124.125 (TWR NORTH) 121.75 (IBND) 118.05 (TWR SOUTH) 121.9 (IBND) 226.675 (ALL TWRS)
------------------------	---	--	---



ELEV 680	D	TDZE 651
-----------------	----------	-----------------



SA CATEGORY I ILS - SPECIAL AIRCREW & AIRCRAFT CERTIFICATION REQUIRED

EC-3, 25 FEB 2021 to 25 MAR 2021

EC-3, 25 FEB 2021 to 25 MAR 2021