

LOC/DME I-VQX 110.75 Chan 44(Y)	APP CRS 274°	Rwy ldg TDZE Apt Elev	7500 667 680
--	------------------------	-----------------------------	---

ILS RWY 28L (CAT II & III)

CHICAGO O'HARE INTL (ORD)

From VOGLR: RNAV 1-GPS required.
 Aircraft not GPS equipped - RADAR required for procedure entry.
 DME or RADAR required.

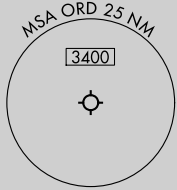
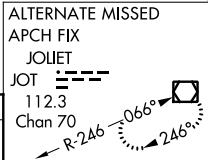
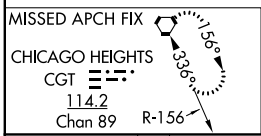
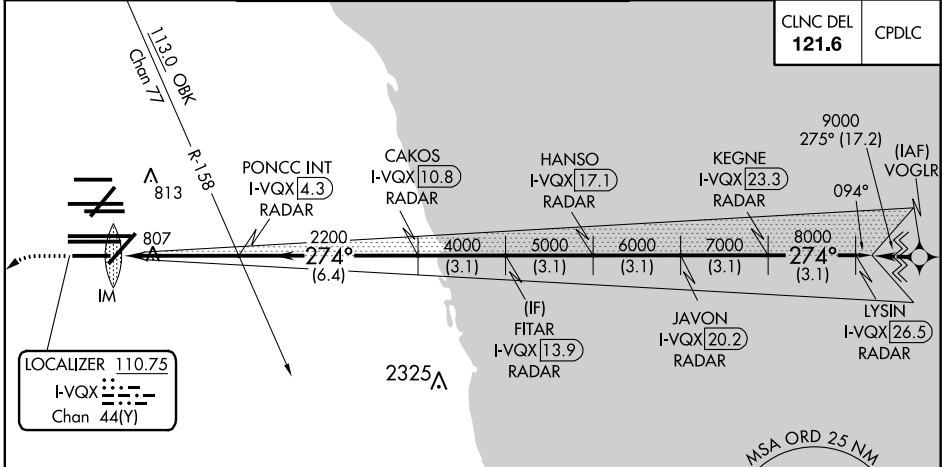
Simultaneous approach authorized.
 CAT II: RVR 1000 authorized with specific OPSPEC, MSPEC,
 or LOA approval and use of autoland or HUD to touchdown.



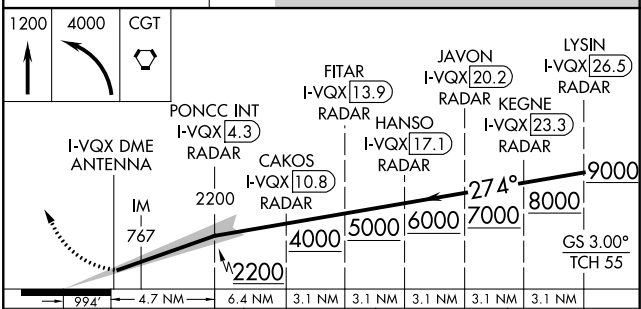
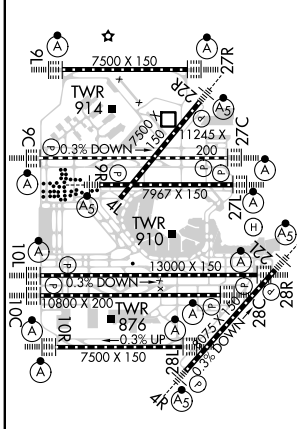
MISSED APPROACH:
 Climb to 1200 then
 climbing left turn to
 4000 direct CGT
 VORTAC and hold.

D-ATIS 135.4 282.225	CHICAGO APP CON 119.0 292.125	O'HARE TOWERS 128.15 348.0 (Rwy 9L/27R) 133.0 348.0 (10R/28L)				GND CON (TWR NORTH) 124.125	(TWR CENTER) 121.75 (OBND)
		120.75	121.15	126.9	132.7	(TWR SOUTH) 118.05	(IBND) 121.9
						(ALL TWRs) 226.675	

CLNC DEL 121.6	CPDLC
--------------------------	-------



ELEV 680	D	TDZE 667
----------	---	----------



CATEGORY	A	B	C	D
S-ILS 28L	CAT II RA 106/12 100 DA 767			
S-ILS 28L	CAT III RVR 06			

CATEGORY II & III ILS - SPECIAL AIRCREW & AIRCRAFT CERTIFICATION REQUIRED

EC-3, 25 FEB 2021 to 25 MAR 2021

EC-3, 25 FEB 2021 to 25 MAR 2021