

LOC/DME I-OYG <b>111.9</b> Chan 56	APP CRS <b>093°</b>	Rwy Idg <b>11245</b> TDZE <b>673</b> Apt Elev <b>680</b>
--	------------------------	--

# ILS RWY 9C (SA CAT I)

## CHICAGO O'HARE INTL (ORD)

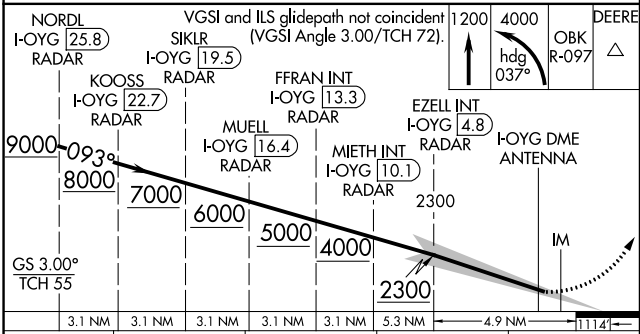
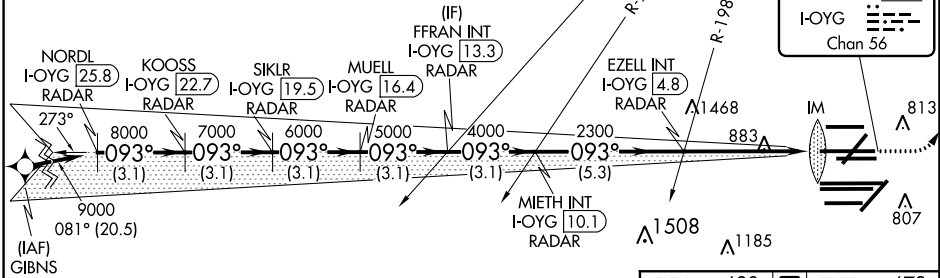
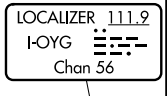
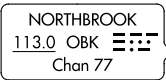
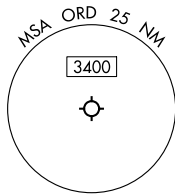
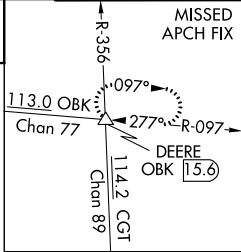
DME or RADAR required. From GIBNS: RNAV 1-GPS required. Aircraft not GPS equipped - RADAR required for procedure entry.

ALSF-2  
MISSED APPROACH: Climb to 1200 then climbing left turn to 4000 on heading 037° and OBK VOR/DME R-097 to DEERE INT/ OBK 15.6 DME and hold.

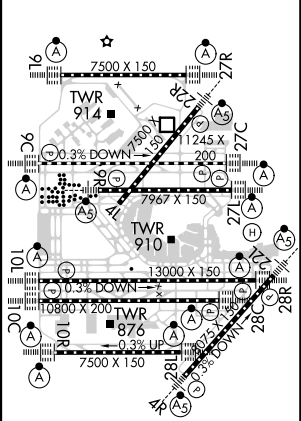
Simultaneous approach authorized. Requires specific OPSPEC, MSPEC or LOA approval and use of HUD to DH.

CHICAGO APP CON <b>119.0 292.125</b>	O'HARE TOWERS <b>128.15 348.0</b> (Rwy 9L/27R) <b>133.0 348.0</b> (10R/28L) <b>120.75 121.15 126.9 132.7 348.0</b> (CENTER)	GND CON (TWR CENTER) <b>124.125</b> (TWR NORTH) <b>121.75</b> (OBND) <b>118.05</b> (TWR SOUTH) <b>121.9</b> (IBND) <b>226.675</b> (ALL TWRs)	CLNC DEL <b>121.6</b>
---	--	---	--------------------------

D-ATIS <b>135.4</b> <b>282.225</b>	MISSED APCH FIX	CPDLC
--	-----------------	-------



ELEV 680	TDZE 673
----------	----------



CATEGORY	A	B	C	D
S-ILS 9L	RA 154/14 150 DA 823			

**SA CATEGORY I ILS - SPECIAL AIRCREW & AIRCRAFT CERTIFICATION REQUIRED**

HIRL all Rwys  
TDZ/CL all Rwys except 4L

EC-3, 25 FEB 2021 to 25 MAR 2021

EC-3, 25 FEB 2021 to 25 MAR 2021