

LOC/DME I-SXH 108.95 Chan 26(Y)	APP CRS 093°	Rwy Ldg TDZE Apt Elev	10540 669 680
--	------------------------	-----------------------------	--

ILS or LOC RWY 10C

CHICAGO O'HARE INTL (ORD)

From GIBNS: RNAV-1 GPS required.

RNAV 1-GPS or RADAR required for procedure entry. DME or RADAR required.

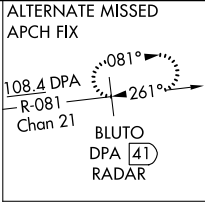
Simultaneous approach authorized.

ALSIF-2

MISSED APPROACH: Climb to 4000 on heading 093° and CGT VORTAC R-336 to CGT VORTAC and hold.

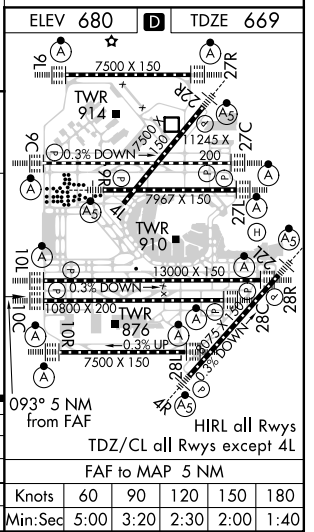
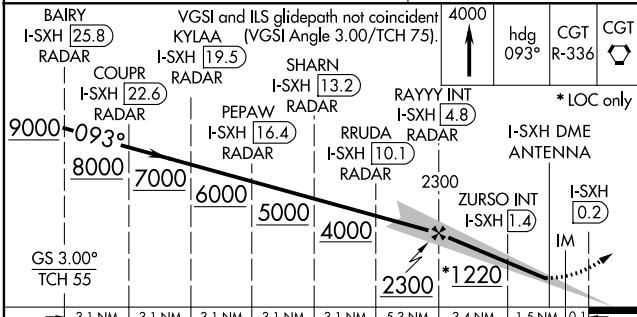
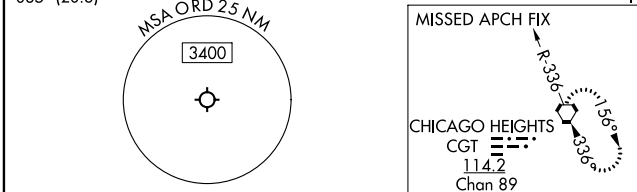
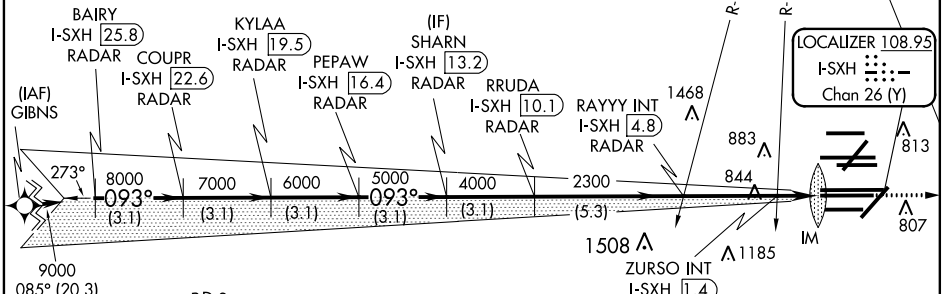
CHICAGO APP CON 119.0 292.125	O'HARE TOWERS Rwy 9L/27R 128.15 348.0	133.0 348.0 (10R/28L)	GND CON (TWR NORTH) 124.125	(TWR CENTER) 121.75 (OBND)	CLNC DEL 121.6
	120.75 121.15 126.9 132.7 348.0 (CENTER)		118.05 (TWR SOUTH)	121.9 (IBND)	
			226.675 (ALL TWRs)		

D-ATIS
135.4
282.225



NORTHBROOK
113.0 OBK
Chan 77

CPDLC



3.1 NM	3.1 NM	3.1 NM	3.1 NM	3.1 NM	5.3 NM	3.4 NM	1.5 NM	0.1 NM
CATEGORY A				CATEGORY B		CATEGORY C		CATEGORY D
S-ILS 10C				869/18 200 (200-1/2)				
S-LOC 10C				1220/24 551 (600-1/2) 1220/60 551 (600-1/4)				
ZURSO FIX MINIMUMS (DUAL VOR RECEIVERS OR DME REQUIRED)								
S-LOC 10C				1100/24 431 (500-1/2) 1100/40 431 (500-3/4)				

EC-3, 25 FEB 2021 to 25 MAR 2021

EC-3, 25 FEB 2021 to 25 MAR 2021