

| | | |
|--|------------------------|--|
| LOC/DME I-UYJ 111.9 Chan 56 | APP CRS 273° | Rwy ldg 11245 TDZE 653 Apt Elev 680 |
|--|------------------------|--|

ILS or LOC RWY 27C

CHICAGO O'HARE INTL (ORD)

From VOGLR: RNAV 1-GPS required. Aircraft not GPS equipped - RADAR required for procedure entry. DME or RADAR required.

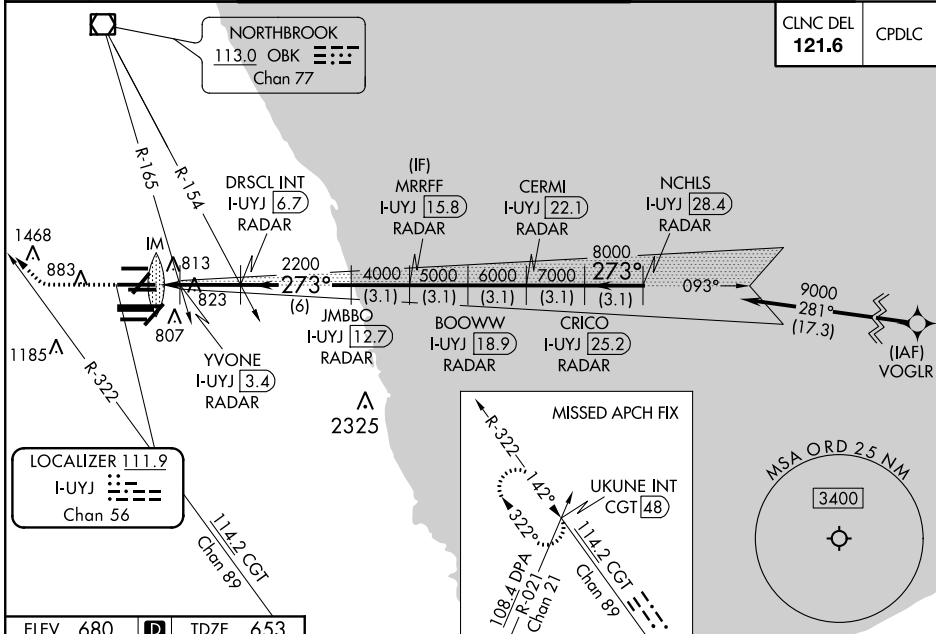
ALSF-2

MISSED APPROACH: Climb to 1100 then climbing right turn to 4000 on heading 290° and CGT R-322 to UKUNE INT/ CGT 48 DME and hold.

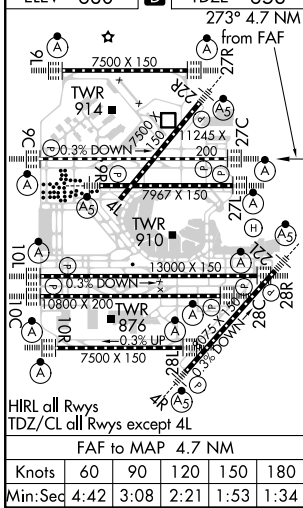
Simultaneous approach authorized. For inop ALS, increase S-LOC 27C Cat C/D visibility to 1½ SM.

| | | | |
|--|---|--|---|
| D-ATIS 135.4 282.225 | CHICAGO APP CON 119.0 292.125 | O'HARE TOWERS 128.15 348.0 (Rwy 9L/27R) 133.0 348.0 (10R/28L) 348.0 (CENTER) | GND CON (TWR CENTER) 124.125 (TWR NORTH) 121.75 (OBND) 118.05 (TWR SOUTH) 121.9 (IBND) 226.675 (ALL TWSR) |
|--|---|--|---|

| | |
|--------------------------|-------|
| CLNC DEL 121.6 | CPDLC |
|--------------------------|-------|



| | |
|----------|----------|
| ELEV 680 | TDZE 653 |
|----------|----------|



| | | | | | |
|---|------|---------------------------|------------------------|---|------------------------|
| 1100 | 4000 | CGT R-322 | UKUNE INT | VGSI and ILS glidepath not coincident (VGSI Angle 3.00/TCH 75). | NCHLS I-UYJ 28.4 RADAR |
| *LOC only. | | DRSCL INT I-UYJ 6.7 RADAR | JMBBO I-UYJ 12.7 RADAR | BOOWW I-UYJ 18.9 RADAR | CRICO I-UYJ 25.2 RADAR |
| I-UYJ 2 | | YVONE I-UYJ 3.4 RADAR | 2200 | 4000 | 5000 |
| IM | | 273° | 8000 | 9000 | 9000 |
| 0.1 | | 0.3 | 3.3 | 3.1 | 3.1 |
| CATEGORY | | A | B | C | D |
| S-ILS 27C | | 853/18 200 (200-½) | | | |
| S-LOC 27C | | 1160/24 507 (500-½) | | 1160/55 507 (500-1) | |
| YVONE FIX MINIMUMS (DUAL VOR RECEIVERS or DME REQUIRED) | | | | | |
| S-LOC 27C | | 1080/24 427 (400-½) | | 1080/40 427 (400-¾) | |

EC-3, 25 FEB 2021 to 25 MAR 2021

EC-3, 25 FEB 2021 to 25 MAR 2021