

LOC/DME I-AIC <b>110.5</b> Chan <b>42</b>	APP CRS <b>273°</b>	Rwy ldg <b>7782</b> TDZE <b>654</b> Apt Elev <b>680</b>
---	------------------------	--

# ILS or LOC RWY 27L

CHICAGO O'HARE INTL (ORD)

From VOGLR: RNAV 1-GPS required. Aircraft not GPS equipped - RADAR required for procedure entry. DME or RADAR required.

ALSF-2

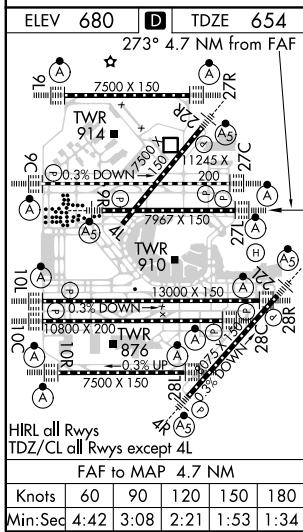
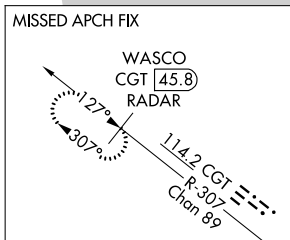
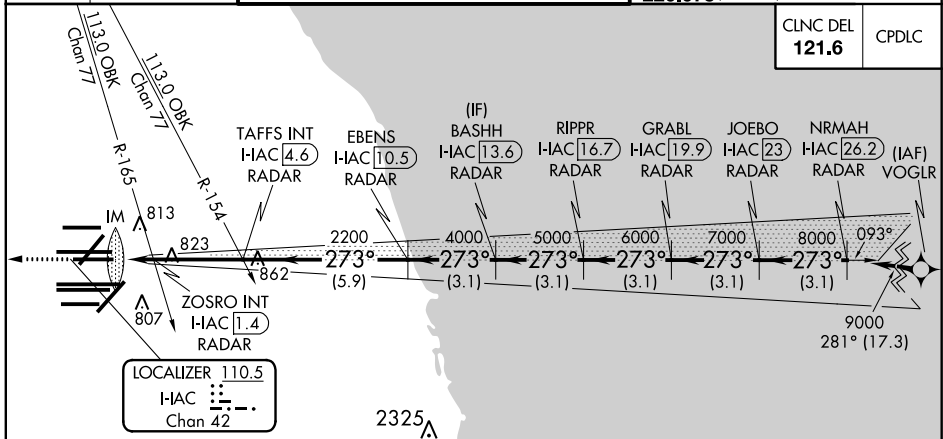


MISSED APPROACH: Climb to 1200 then climb to 4000 on heading 265° and on CGT VORTAC R-307 to WASCO/CGT 45.8 DME/RADAR and hold.

Simultaneous approach authorized.

D-ATIS <b>135.4</b> <b>282.225</b>	CHICAGO APP CON <b>119.0 292.125</b>	O'HARE TOWERS <b>128.15 348.0</b> (Rwy 9L/27R) <b>133.0 348.0</b> (10R/28L) <b>120.75 121.15 126.9 132.7 348.0</b> (CENTER)	GND CON (TWR CENTER) <b>124.125</b> (TWR NORTH) <b>118.05</b> (TWR SOUTH) <b>226.675</b> (ALL TWRs)	(TWR CENTER) (OBND) <b>121.75</b> (IBND) <b>121.9</b>
--	---	--	--	--

CLNC DEL <b>121.6</b>	CPDLC
--------------------------	-------



1200	4000	CGT R-307	WASCO CGT 45.8 RADAR	VGSI and ILS glidepath not coincident (VGSI Angle 3.00/TCH 67).
hdg 265°		BASHH I-HAC 13.6 RADAR, GRABL I-HAC 19.9 RADAR, NRMAH I-HAC 26.2 RADAR		
*LOC only		TAFFS INT I-HAC 4.6 RADAR, EBENS I-HAC 10.5 RADAR, RIPPR I-HAC 16.7 RADAR, JOEBO I-HAC 23 RADAR		
I-HAC DME ANTENNA		ZOSRO INT I-HAC 1.4 RADAR, BASHH I-HAC 13.6 RADAR, GRABL I-HAC 19.9 RADAR, NRMAH I-HAC 26.2 RADAR		
I-HAC 0.1		2200 I-HAC 10.5, 4000 I-HAC 13.6, 5000 I-HAC 16.7, 6000 I-HAC 19.9, 7000 I-HAC 23, 8000 I-HAC 26.2, 9000 I-HAC 26.2		
IM		2200 I-HAC 10.5, 4000 I-HAC 13.6, 5000 I-HAC 16.7, 6000 I-HAC 19.9, 7000 I-HAC 23, 8000 I-HAC 26.2, 9000 I-HAC 26.2		
0.1 1.4 3.2 NM		-5.9 NM - 3.1 NM 3.1 NM 3.1 NM 3.1 NM		
CATEGORY		A B C D		
S-ILS 27L		854/18 200 (200-½)		
S-LOC 27L		1160/24 506 (500-½) 1160/55 506 (500-1)		
ZOSRO FIX MINIMUMS (DUAL VOR RECEIVERS OR DME REQUIRED)				
S-LOC 27L		1080/24 426 (400-½) 1080/40 426 (400-¾)		

EC-3, 25 FEB 2021 to 25 MAR 2021

EC-3, 25 FEB 2021 to 25 MAR 2021